

National Records of Scotland (NRS) Postcode Extract 2015/2

September 2015

The 2015/2 edition of our Postcode Index and digital postcode boundary dataset is now available. The data is based on the July 2015 release of Royal Mail's Postal Address File (PAF).

The Postcode Index links live and deleted postcodes to administrative, health, statistical and other areas.

This version contains:

- 185,615 live and deleted small user records
- 49,064 live and deleted large user records
 - 28,425 are PO Boxes, and
 - 1,457 are unmapped postcodes.

The number of outstanding postcodes without a digital boundary is 16.

What's new in 2015/2

1. Updates

1.1 Electoral Ward 2007

We were notified of a few name changes to the electoral wards in Aberdeen City. No change to the actual boundaries or codes.

Aberdeen City Council laid a report before Parliament in 2013 ([Aberdeen City \(Electoral Arrangements\) Variation Order 2013 \(SSI 2013/115\)](#)). The ward names affected are:

- S13002478: Kingswells / Sheddocksley / Summerhill
- S13002479: Northfield / Mastrick North
- S13002480: Hilton / Woodside / Stockethill
- S13002488: Kincorth / Nigg / Cove

1.2 Travel to Work Areas 2007

The names have changed to follow naming and coding policy. No change to the actual boundaries or codes. All references to '&' have changed to 'and'.

1.3 Retrospective S code update

We have added S codes to our Civil Parishes (S35) geography.

The civil parish code change will be reflected in the new postcode management system output (from 2016/1 extract).

- 1.4 Community Health Partnerships, and Sub Areas
The Community Health Partnership, and Sub Area geographies have been terminated following recommendations in the [Public Bodies \(Joint Working\) \(Scotland\) Act 2014 \(asp 9\)](#).

We will be dropping them from the extract once the replacement geography 'Health and Social Care Partnerships' come into existence in 2016.

Should users still require a postcode assignment of the Community Health Partnerships and Sub Areas data following this please contact [Geography Customer Services](#).

2. New Geographies

- 2.1 Scottish Parliamentary regions and constituencies 2014
A new version (2014) has been created following boundary and code changes. This change took effect from March 2014.

The Boundary Commission for Scotland laid a report before Parliament in 2013 ([The Scottish Parliament \(Constituencies and Regions\) Order 2014 \(SSI 2014/501\)](#)). The areas concerned were :

Scottish Parliamentary regions

- S17000017: Glasgow, and
- S17000018: West Scotland

Scottish Parliamentary constituencies

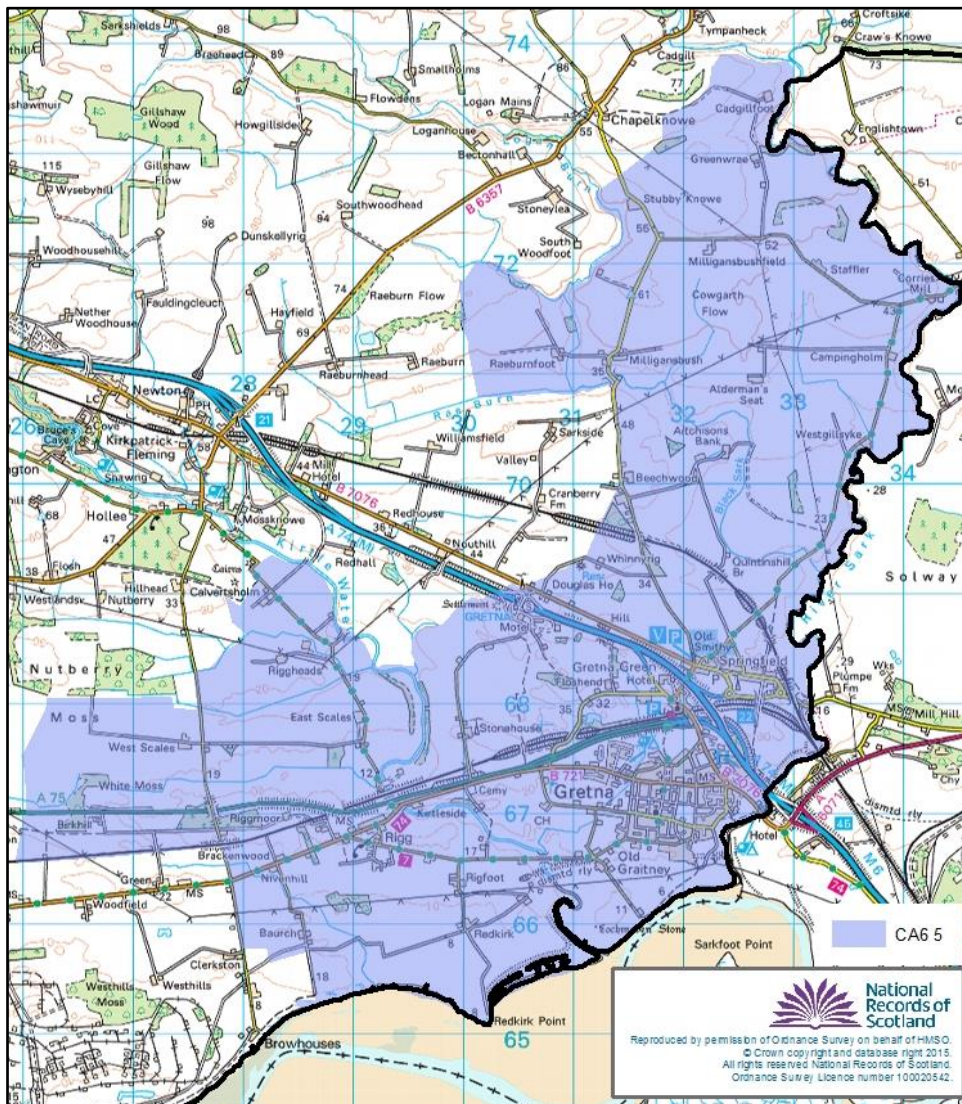
- S16000147: Glasgow Provan, and
- S16000148: Strathkelvin and Bearsden

3. Known Errors

- 3.1 1991 Census counts
We are still looking into an anomaly in the postcode index where the 1991 Census counts do not total those published at the time of the 1991 Census.
- 3.2 Historic CA6 5 (Carlisle) postcodes
There are 130 CA6 5 postcodes (129 small user and 1 large user) in the NRS postcode index. These were re-coded by Royal Mail in August 1993 to DG16 5 postcodes.

As users are aware, there are issues with the 1991 Census counts on the postcode index. In the case of the CA6 5 postcodes, the 1991 Census count information seems to have been omitted. This issue has been fixed in time for the 2015/2 extract.

Of the 129 small user postcodes, 116 were live during the 1991 Census (postcode sector CA6 5 shown below).



Unfortunately there is also an issue with the Royal Mail Delivery Point Count (DPC) information held on the CA6 5 postcodes where we have the total DPC count, but not the breakdown of non-residential or household counts. As this is historic data, there is no way for us to rectify this data.

3.3 Overlapping dates of introduction and deletion

Following investigation, there are 108 postcodes which have been removed from the NRS postcode index (27 small users and 81 large users) due to overlapping dates of introduction and deletion. They are essentially duplicate records. None of the postcodes affected are 'live'.

These codes have overlapping dates of introduction/deletion, and we have kept the most recent on the NRS Postcode Index. For example:

Postcode	Date of Introduction	Date of Deletion	Postcode Type	PCSU Link	Status
AB1 1HR	01/10/1994	01/10/1995	L	NO LINKP	Removed from Index
AB1 1HR	01/08/1973	01/11/1995	S		Remain on Index
AB4 1AB	01/04/1989	01/08/1990	S		Removed from Index
AB4 1AB	01/08/1973	01/07/1992	L	NO LINKP	Remain on Index
EH54 7AD	01/08/1973	01/06/1979	L	NO LINKP	Removed from Index
EH54 7AD	01/07/1979	01/07/1992	L	NO LINKP	Removed from Index
EH54 7AD	01/12/1990	20/12/1999	S		Remain on Index
G1 1RW	01/12/1990	01/06/1992	L	G1 1RE	Removed from Index
G1 1RW	01/08/1973	01/07/1992	L	NO LINKP	Remain on Index

We have created a document listing the 108 postcodes should users require the data. Additional information provided: dates of introduction and deletion, grid references (where applicable), council area, postcode type and Postcode Small User (PCSU) link (where applicable), as well as the Royal Mail Delivery Point Count information that was assigned to them.

3.4 1995 Health Board Area

We have recently discovered that the health board area map used to assign postcodes for 1995 is wrong.

There are 122 small user postcodes affected by this, of which 22 are deleted postcodes. No large user postcodes were affected.

Health Board Area 1995 (as in previous extracts)	Count of PC	Health Board Area 1995 Corrected	Count of PC	PC status	
				Live	Deleted
Argyll and Clyde	15	Forth Valley	14	14	
		Greater Glasgow	1		1
Ayrshire and Arran	4	Argyll and Clyde	1	1	
		Dumfries and Galloway	3	2	1
Fife	3	Lothian	1		1
		Tayside	2	2	
Forth Valley	15	Tayside	15	8	7
Grampian	1	Tayside	1		1
Greater Glasgow	6	Argyll and Clyde	4	2	2
		Forth Valley	1		1
		Lanarkshire	1	1	
Highland	1	Grampian	1		1
Lanarkshire	64	Greater Glasgow	55	52	3
		Lothian	9	9	
Lothian	8	Borders	6	5	1
		Forth Valley	2	2	
Tayside	5	Fife	5	2	3
Total Postcodes affected	122		122	100	22

3.5 Topological errors in the 2015/1 postcode boundary dataset

Thank you to West Dunbartonshire Council for alerting us to some small anomalies within the postcode boundaries dataset. We have fixed the issues in time for the 2015/2 extract.

3.6 Index errors from 2015/1

Thank you to Open University in Scotland for alerting us to some small anomalies (listed below) with the 2015/1 postcode index. These issues have been fixed in time for the 2015/2 extract.

- There were two entries for Small User postcode G63 9AX on the 2015/1 extract. Both had the introduction date of 04/02/2015, however one had been digitised.
- Historic locality codes
 - 2006 locality code '468043' was wrongly shown as '460043' in the metadata.
 - Deleted postcode G46 7PP was wrongly allocated 2003 locality code '490018' instead of '337018'.
 - Deleted postcodes G33 6GE and G33 6GH were wrongly allocated 2003 locality code '490035' instead of '337035'.

4. Supply arrangements

4.1 Postcode Extract Dissemination Survey

Thank you to all 'Cut Version' subscribers for responding to the dissemination survey we ran (April to June 2015). Of the 62 consulted, there were 24 responses. The majority were happy with the proposed change in data release, nine responders had some additional queries which will be looked at during the postcode management project.

4.2 Data formats

The 'Cut Version' of the Postcode Extract is available for free download from the [Postcode Extract](#) page of the National Records of Scotland website.

- Boundary files Shape or MapInfo formats
OSMA members only
- Index files Text or MS Access 2000 compatible format

Customer's requiring the 'Full Version' of the Postcode Extract should contact the [Geography Customer Services](#) team, contact details below.

4.3 Personal Geodatabase (PGDB)

This product will be dropped as of the 2016/1 extract.

5. Copyright and reproduction

5.1 Licence

Postcode Boundaries and Index – 'Cut Version'

You may use this information (not logos) free of charge in any format or medium under the terms of the [Open Government Licence](#) (National Archives website).

Users receiving 'Full Version' are liable for a royalty payment to Royal Mail. Please refer any queries to the Geography Customer Services team, contact details below.

5.2 Copyright statement

The following attribution statement must be acknowledged or displayed on any product using NRS data:

'Contains NRS data © Crown copyright and database right [year]'.
'Contains Ordnance Survey data © Crown copyright and database right [year]'.

'Contains Ordnance Survey data © Crown copyright and database right [year]'.

5.3 Further information of licensing can be found in the geography [licensing](#) page of the NRS website.

6. New Postcode Management and Address Register System

6.1 Progress

We are progressing well with the project, currently at Alpha stage.

We plan to re-process the July 2015 PAF in the new system and produce a postcode index. This will allow us to quality assure the output against the data from the current system, as well as ensure all our processes are working correctly. A number of external customers are helping to quality assure the output.

While delivery of the new system is dependent on successful testing and infrastructure requirements, we are hopeful that it will be up and running for the 2016/1 extract.

6.2 Data Dictionary update

Since the update released at the 2015/1 extract, there have been some changes to the data dictionary.

- New geographies:
 - Health and Social Care Partnerships 2016
 - Workplace Zones 2011
- Changed field names and/or code ranges:
 - Electoral Ward 2011 (replacing 2007)¹
 - Scottish Parliamentary Region 2014 (replacing 2011)
 - Scottish Parliamentary Constituency 2014 (replacing 2011)
 - Travel to Work Areas 2011 (replacing 2007)
 - Civil Parish 1930 (application of 9 character 'S' codes)
 - NUTS2013 (replacing 2008)²

The latest version of the Data Dictionary is available on the [2015/2 Postcode Extract Files](#) page of the NRS website.

Footnote

1) This is a fieldname change only. The codes and boundaries are the same as Electoral Ward 2007. Due to current postcode management system constraints we have been unable to update the field name for this.

2) This is a fieldname change only. The codes and boundaries are the same as NUTS 2008.

6.3 Spatial files

We plan to strip the content of the attribute tables for the postcode boundary dataset.

Proposed fields are as follows: postcode, DPC*, DPCNR*, HC*, council, OA11, DZ11, EW11.

* The DPC, DPCNR and HC data will only be provided to users who are part of the 'One Scotland Mapping Agreement'.

6.4 User guides

We are still planning to release 'How to' guides to help users extract data from our postcode extract products.

We have delayed the release of the guides so that they coincide with the new postcode management system output.

The guides will be based on ArcGIS and Microsoft Access, as these are what we use to produce and interrogate the data. Our current guide plans are based on queries we have received:

ArcGIS

- Basics of arc
- Calculate area
- Join data and create thematic map
- Define projection
- Layout views, legends, labels
- Selections
- Format data for inclusion in Arc

Access

- List of live postcodes
- List of live postcodes and all the associated higher areas
- List of live postcodes for specific higher area
- Linking the Metadata to the Index
- Obtain Census population and household counts
- Join the Small and Large User tables

Are there any specific guides that you require? If so, please contact our Geography Customer Services team and we can look into this as part of the project.

Enquiries

7.1 Please contact our Geography Customer Services team if you need any further information.

E-mail: geographycustomerservices@nrscotland.gov.uk