

## Scottish Postcode Directory 2019/1

March 2019

### Introduction

The Scottish Postcode Directory (SPD) bulletin contains specific information about each release of the Postcode Index and accompanying spatial data.

The Postcode Index links live and deleted postcodes to administrative, health, statistical and other areas. It also contains the Gridlink® one metre grid reference as well as National Records of Scotland (NRS) assigned grid references. The SPD is produced by NRS Geography, who provides geographic support to the Scottish Government (SG) and its associated agencies, as well as other organisations.

NRS have implemented the Government Statistical Service (GSS) standard 9-character codes for statistical geographies into the SPD. The SG maintains the 'Standard Geographic Codes Register – Scotland' and is responsible for assigning new geographies with a nine character code for Scotland. The register is available on the ['Small Area Statistics – Reference Material'](#) section of the Scottish Government website. Customers are encouraged to adopt these standard names and codes, as they are the recognised standard to be used for National Statistics publications. More information on National Statistics can be found on the [UK Statistics Authority](#) website.

### Latest Statistics

The data is based on the January 2019 release of Royal Mail's Postcode Address File (PAF) and contains:

	All postcodes	Live postcodes	Deleted postcodes
<b>All postcodes</b>	238,497	157,505	80,992
<b>Small User</b>	190,150	151,755	38,395
<b>Large User</b>	48,347	5,750	42,597
<i>Small User Linked<sup>1</sup></i>	19,226	3,961	15,265
<i>PO Boxes</i>	29,121	1,789	27,332
The number of live, digitised small user postcodes <sup>2</sup> is 150,550.			

<sup>1</sup> Small User Linked: The Small User postcode that contains the grid reference of the Large User postcode.

<sup>2</sup> Live digitised small user postcodes: There are 1,205 live, undigitised small user postcodes. These postcodes were planned for 'administrative' purposes; and cannot be digitised as they have no distinctive geographical position.

## 1. Updates since 2018/2

### 1.1 Geographies

There have been no changes to the geographies on the SPD Postcode Index.

### 1.2 Boundaries

Postcode alignment work has started to provide a better 'fit' to the National Parks, and Strategic Development Plan Areas.

## 2. Known Errors

Corrections and identified omissions to the data content of the SPD Index and/or Spatial data are included on the subsequent SPD release.

### 2.1 Postcode Index

Thank you to The Open University in Scotland for alerting us to a grid reference anomaly.

NRS apply Ordnance Survey's GridLink grid references when the grid reference of a postcode falls within its NRS postcode boundary. When this occurs the 'GridLinkIndicator' field is populated with 'Y' and the 'GridLinkPositionalAccuracy' field is populated with a number (1 to 9).

Initial investigation indicates the postcode management system is not updating the 'GridLinkIndicator' and 'GridLinkPositionalAccuracy' fields correctly; approximately 1,000 postcodes are affected.

If you require further information on this issue please contact the [Geography Customer Services team](#).

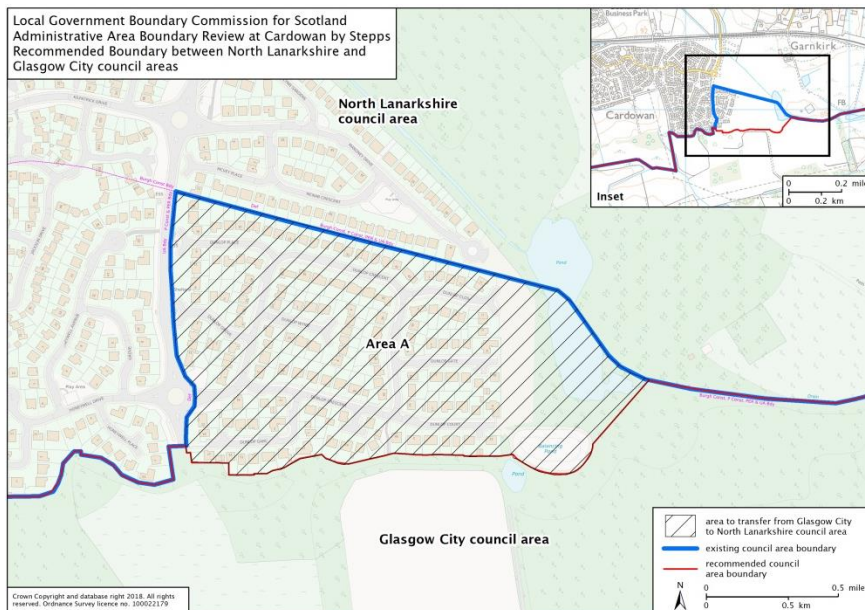
We aim to have this resolved for SPD 2019/2.

## 3. Changing Geographies

### 3.1 Local Government Boundary Commission review

Following a Local Government Boundary Commission review at Cardowan by Steps, the following geographies will change:

Geography	Old Code	New Code	Name
Health Board area	S08000021	S08000031	Greater Glasgow and Clyde
Health Board area	S08000023	S08000032	Lanarkshire
Council area	S12000044	S12000050	North Lanarkshire
Council area	S12000046	S12000049	Glasgow City
Electoral ward	S13002987	S13003133	North East
Electoral ward	S13003046	S13003134	Steps, Chryston and Muirhead
LAU1	S13000019	S30000044	Glasgow City
LAU1	S30000023	S30000045	North Lanarkshire
Integration authority	S37000015	S37000034	Glasgow City
Integration authority	S37000021	S37000035	North Lanarkshire



The Cardowan by Stepps Review ([SSI 2018/308](#)) will come into effect on 1 April 2019.

#### SPD Postcode Index

Following the review, the geographies in the 2019/2 SPD Postcode Index will be updated as shown below.

2019/1 fieldname	2019/2 fieldname
CouncilArea2018Code	CouncilArea2019Code
ElectoralWard2018Code	ElectoralWard2019Code
HealthBoardArea2018Code	HealthBoardArea2019Code
IntegrationAuthority2018Code	IntegrationAuthority2019Code
LAU2018Level1Code	LAU2019Level1Code

#### SPD Postcode Boundaries

The attributes found on the postcode boundaries for Council Area and Electoral Ward will also be updated to reflect the new versions.

- 3.2 Electoral arrangements for areas specified in the Islands (Scotland) Act 2018  
On 14 January 2019, the Local Government Boundary Commission began reviews of electoral arrangements for the 6 Council areas specified in the [Islands \(Scotland\) Act 2018](#).

These are:

- Argyll and Bute,
- Highland,
- Na h-Eileanan Siar,
- North Ayrshire,
- Orkney Islands, and
- Shetland Islands.

The new islands legislation allows for use of 1 or 2 member wards, in addition to the current multi-member wards, where a ward includes an inhabited island.

More information can be found on the [Island Reviews](#) section of the [Local Government Boundary Commission's website](#).

#### 4. Differences in Scottish data between the Scottish Postcode Directory (SPD) Postcode Index and the Office for National Statistics Postcode Directory (ONSPD)

##### 4.1 Postcode History

The SPD Postcode Index provides full postcode history; the ONSPD provides the most current version of the postcode only (as shown below).

SPD Postcode Index:

Postcode	Date of Introduction	Date of Deletion
G31 4QD	01-Aug-73	01-May-95
G31 4QD	20-Apr-12	06-Jul-12
G31 4QD	17-Apr-13	07-Aug-13
G31 4QD	16-Jan-14	

ONSPD:

Postcode	Date of Introduction	Date of Deletion
G31 4QD	201310	

##### 4.2 Postcode Updates

Due to differing update regimes existing between ONS and NRS, the dates for introduction and deletion can differ. The SPD Postcode Index contains quarterly PAF updates, whereas the ONSPD contains monthly PAF updates.

##### 4.3 Split postcodes

Unlike the SPD Postcode Index the ONSPD does not recognise split postcodes. Instead the ONSPD holds the postcode as a whole record.

##### 4.4 PO Box postcodes

Users are reminded that grid references for PO Box addresses are assigned to the local Royal Mail sorting/delivery office and are deemed low quality.

#### 5. Supply arrangements

##### 5.1 Data Formats

The 'Cut Version' of the Scottish Postcode Directory is available for free download from the [Scottish Postcode Directory](#) page of the National Records of Scotland website.

- Boundary files      Shape format  
One Scotland Mapping Agreement (OSMA) members only
- Index files            CSV, or Microsoft (MS) Access 2000 compatible format
- Lookup files          CSV, or Microsoft (MS) Access 2000 compatible format

5.2 Full Version

The 'Full Version' of the Scottish Postcode Directory can be supplied for a charge (a royalty payment to Royal Mail), please contact the [Geography Customer Services team](#).

**6. Licence and Copyright Statements**

6.1 Postcode Boundaries and Grid References

This dataset is being made available for your personal, non-commercial use under the terms of the [INSPIRE \(Scotland\) End User Licence](#) because it includes Ordnance Survey (OS) Licensed data.

By viewing and or downloading this dataset you will have been deemed to have accepted the terms of this licence. You may not sub-license, distribute, sell or otherwise make available any part of this dataset to third parties (including others within your business), except where expressly authorised in writing by us (the Licensor) and OS (for example, by having a valid licence for the data used in the creation of this dataset).

Where re-use is permitted, the following attribution statements from us must be incorporated into the form of any other required acknowledgement needed to be used under that authorisation: © Crown copyright and database rights (insert year) (organisation covered by Crown copyright) – i.e. "© Crown copyright and database rights (insert year) National Records of Scotland".

For more information, OSMA members should look at the [public sector licensing guidance](#) at or contact [osma@os.uk](mailto:osma@os.uk); while other interested parties should contact [businessenquiries@os.uk](mailto:businessenquiries@os.uk).

6.2 Postcode District and Sector Boundaries and Grid References

You may use this information (not logos) free of charge in any format or medium under the terms of the [Open Government Licence](#) (National Archives website).

6.3 Scottish Postcode Directory - Postcode Index

The following attribution statement must be acknowledged or displayed on any product using NRS data:

'Contains NRS data © Crown copyright and database right [year].'

6.4 Further information of licensing can be found in the geography [licensing](#) page of the NRS website.

**7. Enquiries**

Please contact our Geography Customer Services team if you need any further information.

E-mail: [geographycustomerservices@nrscotland.gov.uk](mailto:geographycustomerservices@nrscotland.gov.uk)