

New Variant Household Projections

1.	Background.....	1
2.	Scotland Results	1
3.	Results for Local Authorities	1
4.	Next Steps	2

1. Background

For the first time in January this year General Register Office for Scotland (GROS) published additional variants for the 2008-based population projections. These additional variants are high and low life expectancy, high and low fertility and zero migration. High and low migration variants were published previously as part of the main 2008-based Population Projections for Scottish Areas publication. The additional population projections now make it possible to produce additional corresponding variants for household projections.

Variant projections provide a broad indication of the sensitivity of the household projections to the demographic assumptions. The principal household projections are based on the principal population projections which use assumptions about fertility, mortality and migration that are thought most likely to occur over the next 25 years. Variant projections are based on alternative assumptions of future fertility, mortality and migration.

Note: Household Analysis Review Group (HARG) members are asked to consider the additional variant household projections along with other alternatives incorporating survey data and determine which should be prioritised.

2. Scotland Results

The principal household projection shows the number of households in Scotland increasing from 2.3 million in 2008 to 2.8 million in 2033. This compares to 2.6 million households for zero migration and 2.9 million households for high migration variants in 2033. [Chart 1](#) illustrates these figures, along with results for other variants.

[Chart 2](#) compares the projected percentage change in households from 2008 to 2033 for variant projections. All variants show projected increases in smaller households but decreases in larger households.

[Chart 3](#) compares the projected percentage changes in age groups from 2008 to 2033 for variant projections. All variants show large projected increases in the 75+ age group. Low and zero migration projections show small percentage reductions in the 30-34 and 45-59 age groups.

3. Results for Local Authorities

Variant household projections for Local Authorities follow similar patterns as those for Scotland though there are exceptions. Details for individual Local Authorities and Scotland can be seen in [Table 1](#) and [Table 2](#).

For most Local Authorities the projected number of households for the variants follow a similar pattern with the high migration variant projecting the highest number of households for 2033, then high fertility, high life expectancy, the principal projection, and below this low life expectancy, low fertility and then low migration variant. The zero migration variant gave the lowest projected number of households for Scotland compared with the other variants mentioned. The results for the zero migration variant differ significantly across the council areas depending on the migration assumptions for the principal population projection. For example, for Dundee where the projected long-term net migration assumption is -350 persons per year, the zero migration assumption leads to a higher projected number of households for 2033 than the principal projection. (Chart 4)

Changing life expectancy assumptions also has differing effects on the projected population for each area of Scotland. Areas which have a high proportion of older aged people and less migration tend to be more affected by the changes in life expectancy assumption. For example, in the Orkney Islands the high life expectancy variant gives the greatest number of projected households. (Chart 5)

4. Next Steps

GROS will continue to investigate variants along with alternative headship rates to produce a range of household projections. (See HARG 2011 (3). Alternative Headship Rates for Household Projections)

Note: HARG members are asked to consider the additional variant household projections along with other alternatives incorporating survey data and determine which should be prioritised.

GROS: Household estimates and projections branch
March 2011

Chart 1

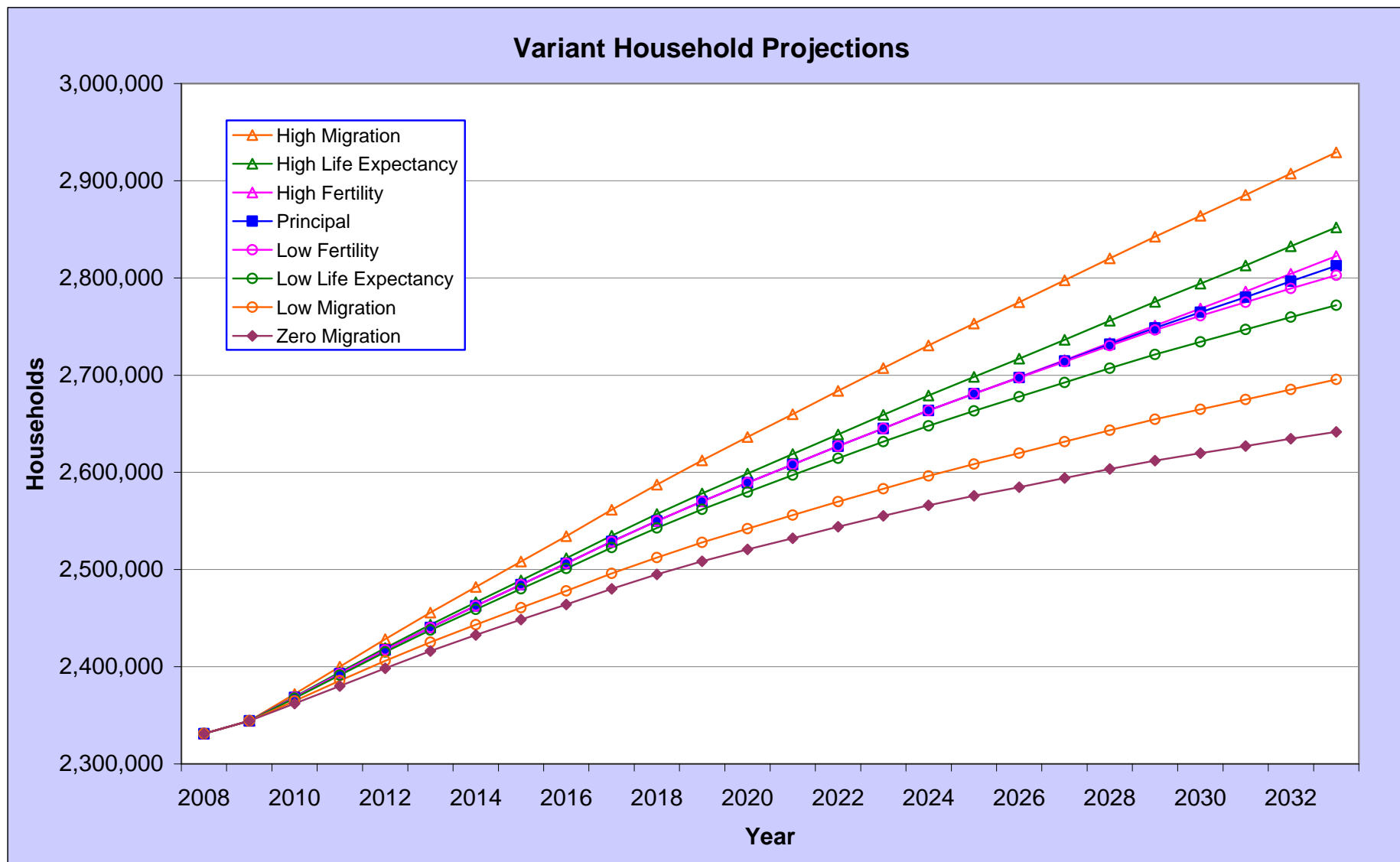


Chart 2

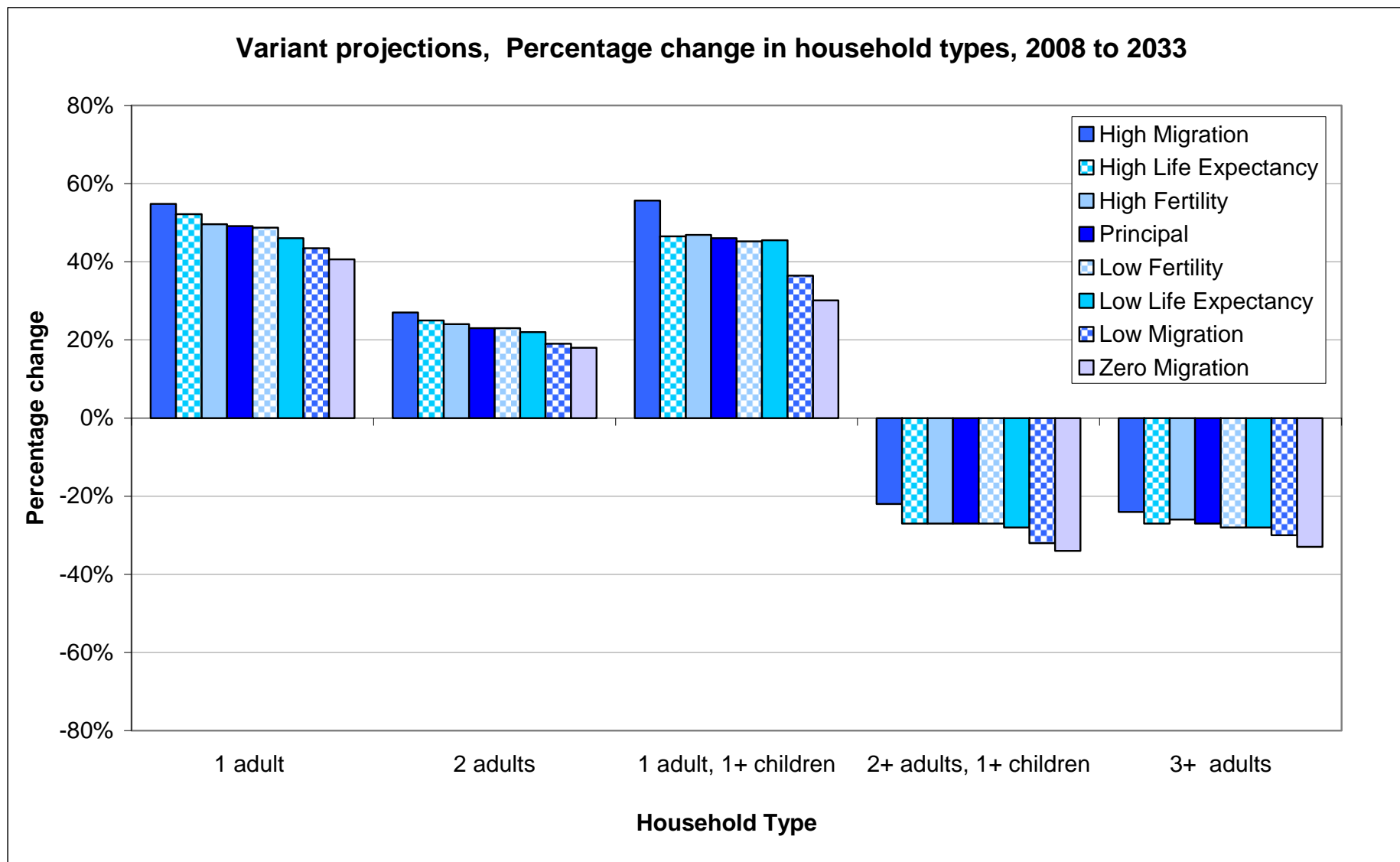


Chart 3

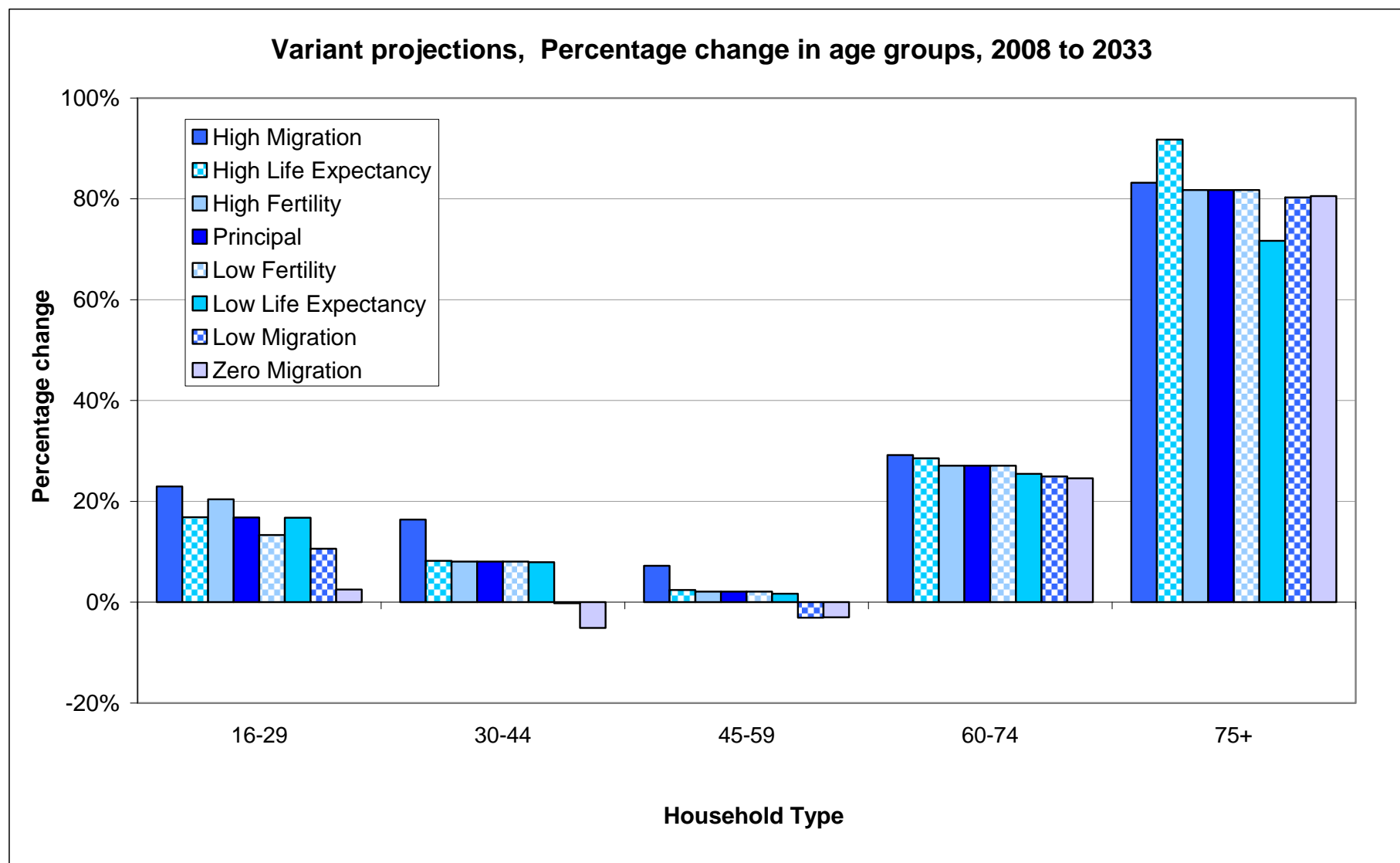
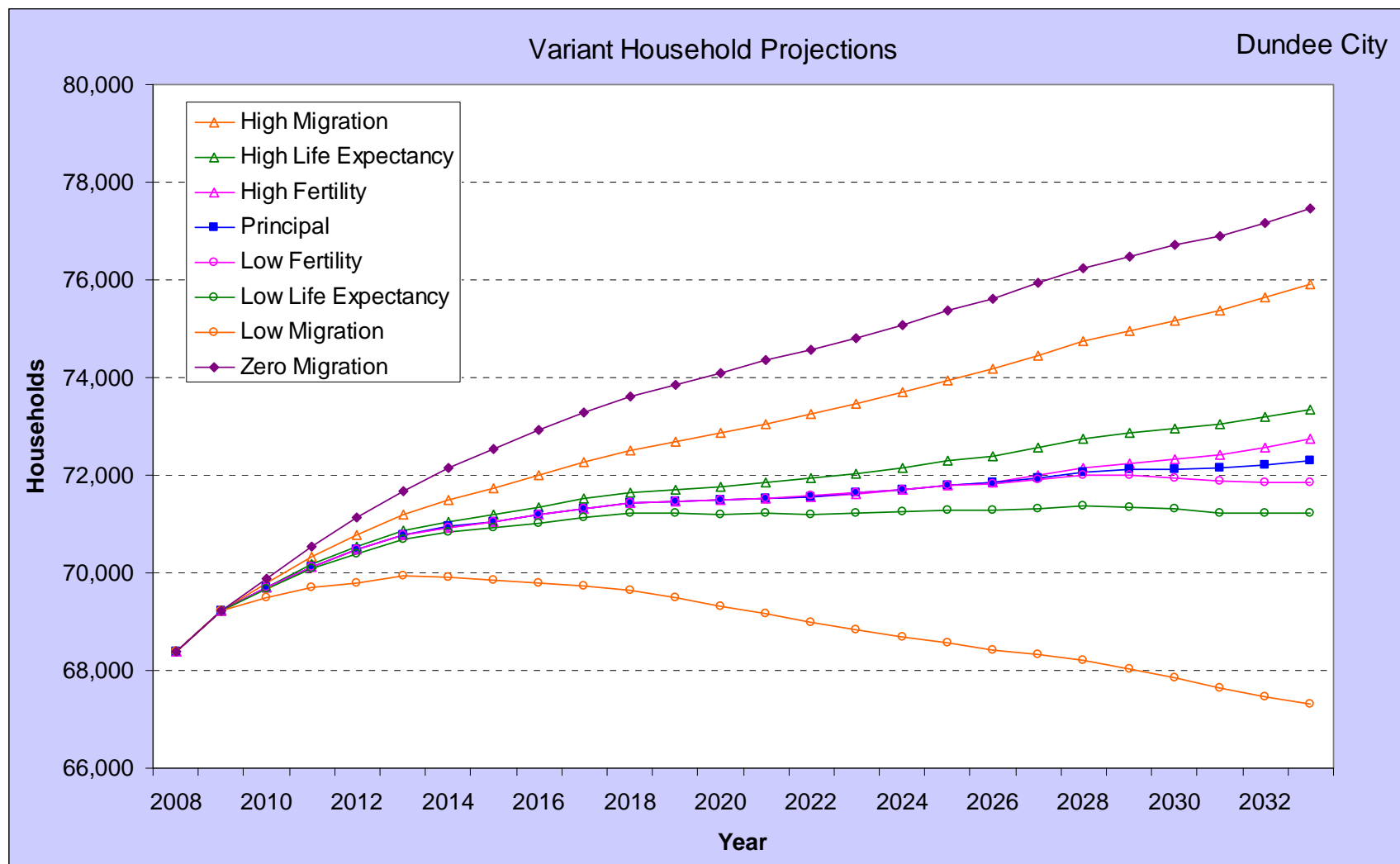
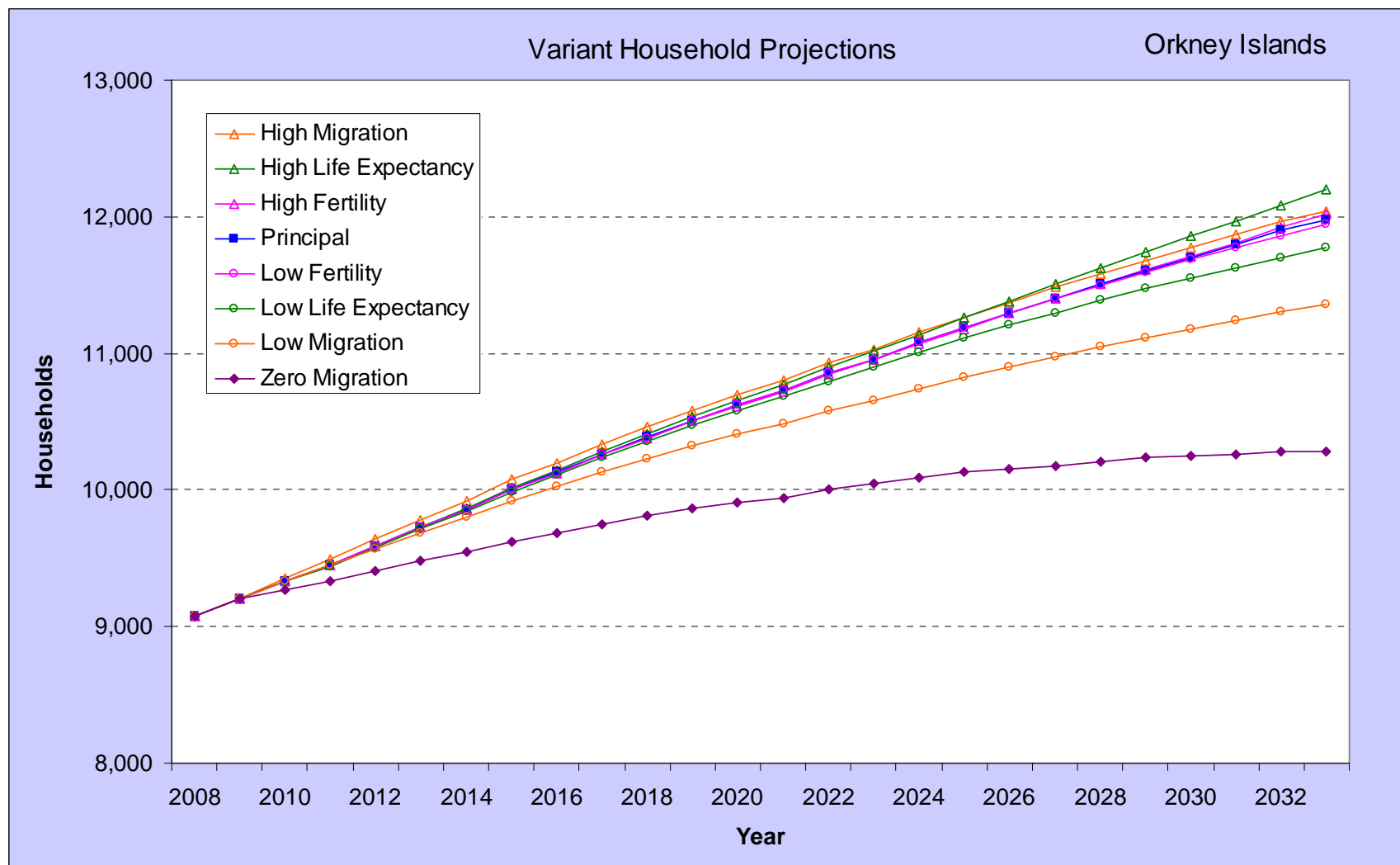


Chart 4



For Dundee City the zero migration variant gives the greatest number of projected households.

Chart 5



For Orkney Islands the high life expectancy variant gives the greatest number of projected households.

Table 1 - Variant Household Projections for 2033, by Local Authority

Local authority	High Migration	High Life Expectancy	High Fertility	Principal	Low Fertility	Low Life Expectancy	Low Migration	Zero Migration
Scotland	2,929,300	2,851,977	2,822,600	2,812,517	2,802,841	2,771,913	2,695,456	2,641,714
Aberdeen City	127,753	123,464	122,781	122,067	121,388	120,674	109,645	117,269
Aberdeenshire	142,893	139,114	137,388	137,167	136,974	135,186	134,523	117,768
Angus	61,736	59,996	59,239	59,070	58,905	58,119	58,492	53,919
Argyll & Bute	45,088	43,696	43,016	42,901	42,808	42,076	40,561	41,567
Clackmannanshire	32,833	32,341	32,068	31,920	31,789	31,508	31,365	26,920
Dumfries & Galloway	78,077	75,831	74,681	74,413	74,165	72,998	70,625	69,975
Dundee City	75,907	73,353	72,749	72,285	71,848	71,212	67,323	77,450
East Ayrshire	60,448	60,029	59,210	59,003	58,790	57,973	56,997	57,995
East Dunbartonshire	43,886	44,070	43,387	43,352	43,291	42,574	41,879	49,126
East Lothian	60,775	59,562	58,906	58,798	58,673	58,021	56,752	47,575
East Renfrewshire	38,159	38,296	37,724	37,668	37,641	37,046	36,516	40,633
Edinburgh, City of	314,323	296,062	294,647	293,151	291,748	290,140	272,757	256,217
Eilean Siar	14,024	13,662	13,448	13,403	13,373	13,140	12,861	12,382
Falkirk	89,738	87,622	86,738	86,414	86,130	85,173	85,834	77,777
Fife	205,160	200,606	198,612	197,861	197,129	194,968	191,069	182,854
Glasgow City	349,184	338,145	335,604	334,100	332,626	329,874	310,844	325,161
Highland	137,262	131,744	130,107	129,791	129,494	127,802	126,329	109,091
Inverclyde	35,815	35,256	34,749	34,614	34,488	33,945	33,683	39,719
Midlothian	40,362	40,128	39,666	39,563	39,454	38,970	37,928	39,852
Moray	46,230	44,145	43,601	43,482	43,333	42,767	41,027	41,414
North Ayrshire	68,817	67,911	67,034	66,809	66,600	65,680	64,629	67,647
North Lanarkshire	171,478	170,753	168,773	168,235	167,724	165,636	164,756	168,812
Orkney Islands	12,042	12,197	12,019	11,981	11,940	11,773	11,353	10,287
Perth & Kinross	95,170	90,216	89,267	89,035	88,835	87,785	87,828	70,819
Renfrewshire	85,006	84,166	83,104	82,792	82,534	81,478	80,303	87,217
Scottish Borders	67,939	65,872	65,083	64,878	64,666	63,839	61,705	54,823
Shetland Islands	11,827	11,322	11,177	11,143	11,112	10,948	10,424	11,805
South Ayrshire	56,764	56,339	55,551	55,392	55,230	54,410	53,503	53,337
South Lanarkshire	169,224	168,347	166,389	165,979	165,555	163,491	163,292	153,807
Stirling	47,463	45,691	45,265	45,095	44,919	44,467	43,140	44,516
West Dunbartonshire	44,236	43,726	43,216	43,058	42,899	42,406	42,247	46,324
West Lothian	99,683	98,314	97,399	97,095	96,780	95,834	95,264	87,658

Table 2 - Projected percentage change in households from 2008 to 2033, by Local Authority

Local authority	High Migration	High Life Expectancy	High Fertility	Principal	Low Fertility	Low Life Expectancy	Low Migration	Zero Migration
Scotland	26%	22%	21%	21%	20%	19%	16%	13%
Aberdeen City	24%	20%	19%	19%	18%	17%	7%	14%
Aberdeenshire	41%	37%	35%	35%	35%	33%	33%	16%
Angus	24%	20%	19%	18%	18%	16%	17%	8%
Argyll & Bute	9%	6%	4%	4%	3%	2%	-2%	0%
Clackmannanshire	45%	43%	42%	41%	41%	39%	39%	19%
Dumfries & Galloway	15%	12%	10%	10%	9%	8%	4%	3%
Dundee City	11%	7%	6%	6%	5%	4%	-2%	13%
East Ayrshire	14%	13%	12%	11%	11%	9%	7%	9%
East Dunbartonshire	2%	3%	1%	1%	1%	-1%	-2%	15%
East Lothian	45%	42%	40%	40%	40%	38%	35%	13%
East Renfrewshire	7%	7%	6%	6%	6%	4%	2%	14%
Edinburgh, City of	44%	36%	35%	35%	34%	33%	25%	18%
Eilean Siar	19%	16%	14%	13%	13%	11%	9%	5%
Falkirk	32%	29%	28%	27%	27%	26%	27%	15%
Fife	29%	26%	25%	24%	24%	22%	20%	15%
Glasgow City	24%	20%	19%	19%	18%	17%	11%	16%
Highland	38%	32%	30%	30%	30%	28%	27%	9%
Inverclyde	-2%	-4%	-5%	-5%	-6%	-7%	-8%	9%
Midlothian	18%	17%	16%	16%	15%	14%	11%	16%
Moray	19%	14%	12%	12%	12%	10%	6%	7%
North Ayrshire	12%	10%	9%	9%	8%	7%	5%	10%
North Lanarkshire	20%	19%	18%	17%	17%	15%	15%	18%
Orkney Islands	33%	34%	32%	32%	32%	30%	25%	13%
Perth & Kinross	48%	40%	39%	38%	38%	36%	36%	10%
Renfrewshire	8%	7%	6%	5%	5%	3%	2%	11%
Scottish Borders	33%	28%	27%	27%	26%	25%	20%	7%
Shetland Islands	23%	18%	17%	16%	16%	14%	9%	23%
South Ayrshire	11%	10%	9%	8%	8%	6%	5%	4%
South Lanarkshire	25%	24%	23%	22%	22%	21%	20%	13%
Stirling	26%	22%	21%	20%	20%	18%	15%	19%
West Dunbartonshire	7%	5%	4%	4%	3%	2%	2%	12%
West Lothian	38%	36%	35%	34%	34%	33%	32%	21%