
Mid-2011 Population Estimates Scotland

Population estimates by sex, age and administrative area

Published on 31 May 2012

A National Statistics publication for Scotland

National Statistics are produced to high professional standards set out in the National Statistics Code of Practice. They undergo regular quality assurance reviews to ensure that they meet customer needs.



Contents

Main Points.....	5
1. Background.....	6
2. The population of Scotland	7
3. The age and sex structure of the population	9
4. Estimates for administrative areas in Scotland.....	11
4.1 Population change mid-2010 to mid-2011	11
4.2 Components of migration mid-2010 to mid-2011	11
4.3 In and out migration.....	11
4.4 Net migration	13
4.5 Population change mid-2001 to mid-2011	13
4.6 Age and sex structure of administrative areas in Scotland.....	18
4.7 Population density	19
5. Notes and definitions.....	39
6. Notes on statistical publications	43
7. Related organisations	45

List of Tables

Table 1:	Estimated population by age and sex, Scotland, mid-2011	20
Table 2:	Estimated population by sex, single year of age and administrative area, mid-2011	21
Table 3:	Estimated population by sex, five year age group and administrative area, mid-2011	30
Table 4:	Components of population change by administrative area, mid-2010 to mid-2011	33
Table 5:	Components of migration by administrative area, mid-2010 to mid-2011	34
Table 6:	Components of population change by administrative area, mid-2001 to mid-2011	35
Table 7:	Age and sex structure of administrative areas, mid-2011	36
Table 8:	Rest of UK / Overseas moves and total resident population of Scotland by age group, mid-2010 to mid-2011	37
Table 9:	Land area and population density by administrative area, mid-2011	38

List of Figures

Figure 1:	Estimated population of Scotland, 1951 to 2011	7
Figure 2:	Natural change and net migration, 1951 to 2011.....	8
Figure 3:	Estimated population by age and sex, mid-2011	9
Figure 4:	The changing age structure of Scotland's population, mid-2001 to mid-2011 .	10
Figure 5a:	Origin of in-migrants by Council areas, mid-2010 to mid-2011 (ranked by increasing percentage of migrants from within Scotland)	12
Figure 5b:	Destination of out-migrants by Council areas, mid-2010 to mid-2011 (ranked by increasing percentage of migrants to within Scotland).....	13
Figure 6a:	Percentage change in population, Council areas, mid-2001 to mid-2011 (Map)	14
Figure 6b:	Percentage change in population, Council areas, mid-2001 to mid-2011 (Chart)	15
Figure 7a:	Percentage change in population, NHS Board areas, mid-2001 to mid-2011 (Map)	16
Figure 7b:	Percentage change in population, NHS Board areas, mid-2001 to mid-2011 (Chart)	17
Figure 8:	Age structure of Council areas, mid-2011 (ranked by percentage aged 65+) .	18
Figure 9:	Age structure of NHS Board areas, mid-2011 (ranked by percentage aged 65+)	19

Main Points

The main points in this report are:

- The estimated population of Scotland on 30 June 2011 was 5,254,800, a rise of 32,700 on the previous year and the highest ever.
- There were 2,548,200 males and 2,706,600 females. The number of males was the highest ever but the number of females was less than the peak of 2,721,500 in 1974.
- The population increased because 4,800 more people were born than died, and because immigration exceeded emigration by 27,000. Other minor changes resulted in a gain of 900 people.
- Over the 10 years between mid-2001 and mid-2011, Scotland's population increased by 3.8 per cent (+190,600) from 5.06 million to 5.25 million.
- In the twelve months up to 30 June 2011, the number of births exceeded the number of deaths by 4,800, the second largest natural increase since 1991-92.
- Over the year there was a net migration gain of 27,000 people. This includes net gains of 2,900 people from the rest of the UK, 25,400 people from overseas (including asylum seekers) and a net loss of 1,400 people to the armed forces.
- Over the year 42,300 people (including asylum seekers) came to Scotland from overseas and 16,900 left Scotland to go overseas. The net gain of 25,400 represents about 1 in 200 (0.5 per cent) of the total population. This net increase is the highest since these estimates began in 1991-92.
- The net gain from the rest of the UK was less than that from overseas. Over the year, 43,700 people came to Scotland from England, Wales and Northern Ireland and 40,800 left Scotland to go in the opposite direction. The net gain of 2,900 is lower than the previous year's 3,300 gain because fewer people came to Scotland.
- Among Council areas, between mid-2010 and mid-2011, City of Edinburgh had the largest percentage population increase at +1.9 per cent, followed by Aberdeen City and Midlothian (both +1.5 per cent), and Perth & Kinross (+1.2 per cent). Inverclyde had the largest percentage population decrease at -0.7 per cent, followed by Moray (-0.5 per cent) and Eilean Siar (-0.4 per cent).
- Among NHS Board areas, Lothian had the largest percentage population increase (+1.4 per cent), followed by Grampian (+0.9 per cent) and Tayside (+0.8 per cent). The only NHS Board areas to have experienced a decline in population were Western Isles (-0.4 per cent) and Dumfries & Galloway (-0.1 per cent).
- The median age (the age at which half the population is older and half is younger) of the population in Scotland was 41.
- The median age was lower in big city areas (35 in Glasgow City and City of Edinburgh) than in more rural areas (46 in Argyll & Bute, Dumfries and Galloway and Eilean Siar).
- On average, there were 67 people per square kilometre in Scotland, ranging from 8 people per square kilometre in Eilean Siar to 3,412 people per square kilometre in Glasgow City Council area. The average population density for the UK at mid-2010 was 257 people per square kilometre.

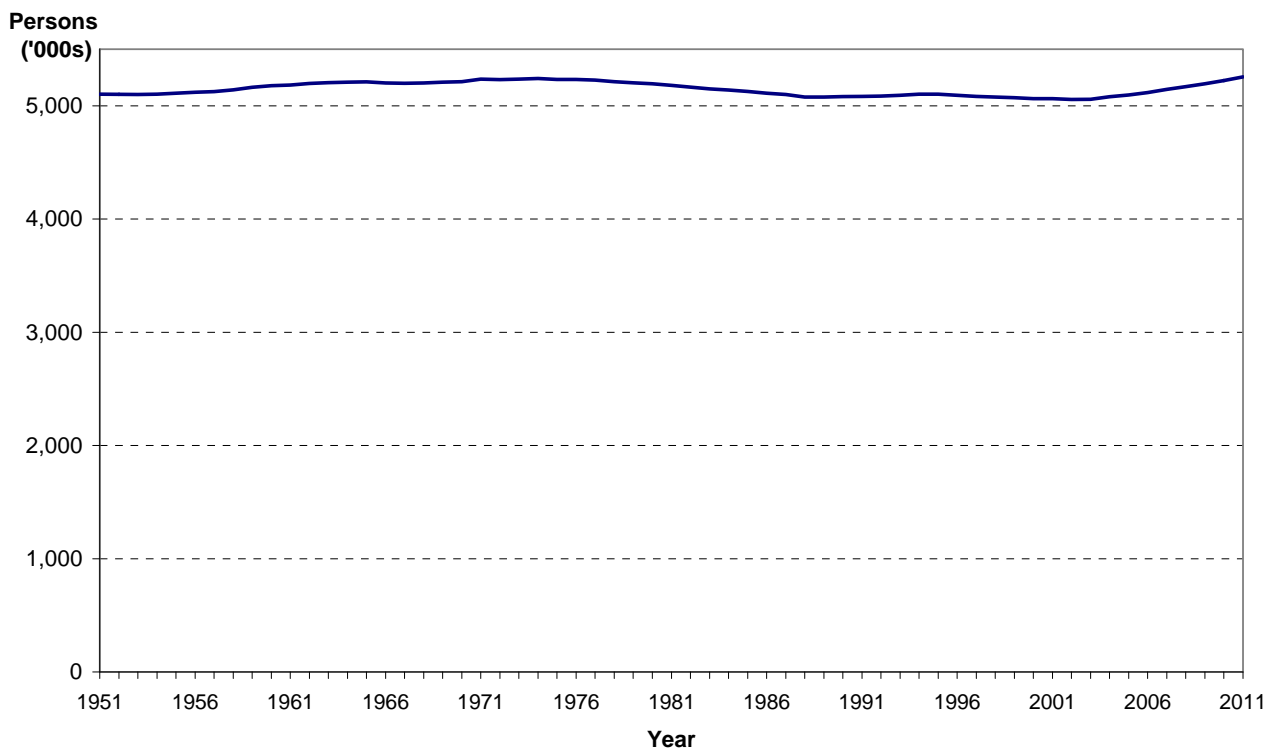
1. Background

- 1.1 This paper summarises the Registrar General for Scotland's mid-2011 estimates of the population of Scotland and its administrative areas. Some relevant historical information and a table giving land areas and population densities are also presented.
- 1.2 These population estimates are produced using the demographic cohort component method. The estimates are based on the 2001 Census. Each year the population is 'aged on' one year (that is, the 0 year olds become 1 year olds, and so on), the number of births in the year are added, the number of deaths subtracted and adjustments are made for estimated migration and other changes in special populations. It is important to remember that while the number of births and deaths are considered to be almost complete, there is no comprehensive source of migration data for moves within Scotland, or to and from the rest of the UK and the rest of the world. Estimates of migration are made using the best proxy sources available including General Medical Practitioner (GP) registrations and survey information. Therefore, any error in the population estimates is likely to be due to the migration estimates, particularly the international estimates. The method used to estimate migration is described in [Section 5](#). The [methodology behind the population estimates](#) is described in full on the National Records of Scotland (NRS) website.
- 1.3 There is progressively more uncertainty associated with the population estimates as the number of years since the previous census increases. The estimates for mid-2002 to mid-2011 will be re-based using the 2011 Census data when it becomes available.
- 1.4 The Scottish Government has set a target to match average European (EU15) population growth over the period from 2007 to 2017. The population estimates in this publication will be used to measure progress towards this target. More details can be found on the [Scotland Performs](#) website.
- 1.5 Population estimates are used for a variety of different purposes including resource allocation and planning of services such as education and health. They are also used for calculating rates and performance measures, informing local and national policy, weighting surveys and in modelling the economy.

2. The population of Scotland

2.1 The estimated population of Scotland on 30 June 2011 was 5,254,800, the highest ever (Figure 1). This represents an increase of 32,700 on the previous year and is 200,000 higher than the estimate for mid-2002, when the population dropped to its lowest level in recent times. In the twelve months to mid-2011, there was a net migration gain of 27,000 people, consisting of a net gain of 2,900 people from the rest of the UK, a net gain of 25,400 from overseas (including asylum seekers) and a net loss of 1,400 due to movements between the armed forces and the civilian population. Other changes (including changes in the prison population, and changes in the number of armed forces stationed in Scotland) amounted to an increase of 900 people. There were 58,766 births in 2010-11 (slightly fewer than the previous year) and 53,957 deaths (slightly more than the previous year). The number of births in the twelve months up to mid-2011 exceeded the number of deaths by 4,809. This compares to a gain of 5,188 in 2009-10.

Figure 1: Estimated population of Scotland, 1951 to 2011



2.2 This is the ninth year in a row that the Scottish population has increased and most of the increase was because more people migrated into Scotland than left.

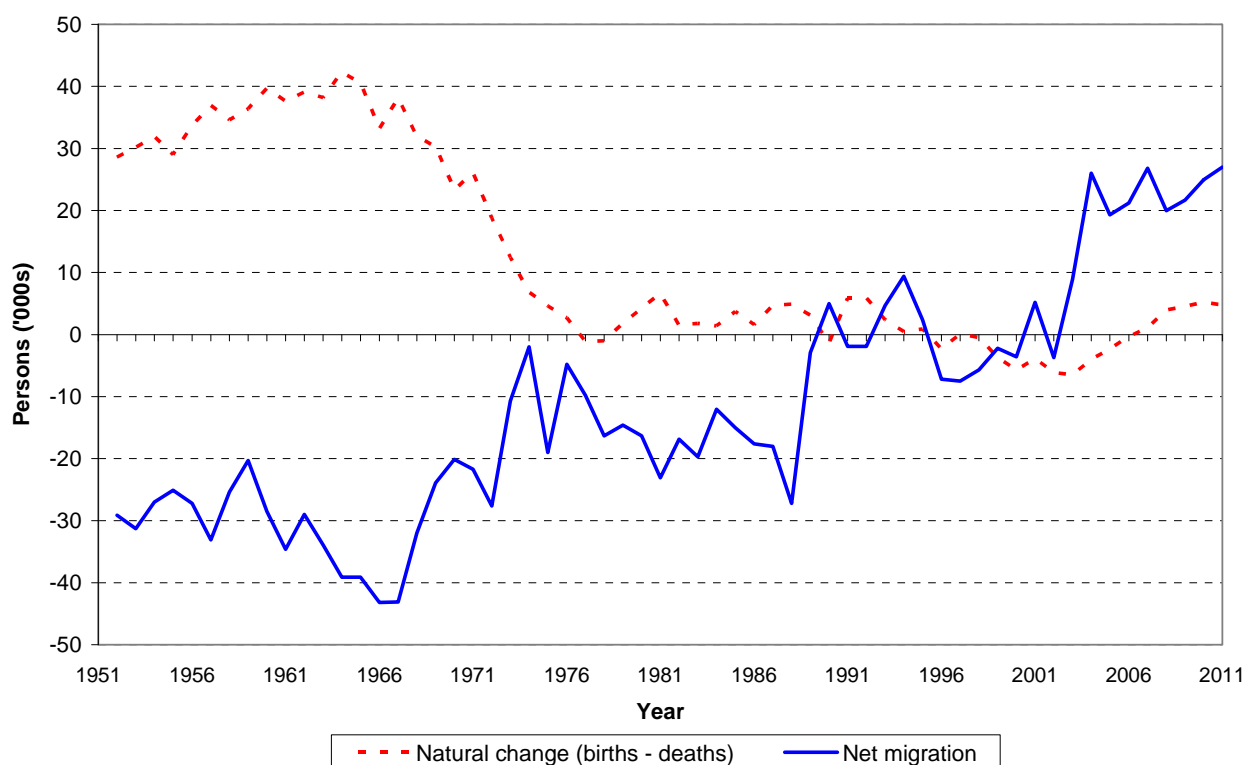
2.3 In 2010-11 around 43,700 people came to Scotland from England, Wales and Northern Ireland, and 40,800 left Scotland to go in the opposite direction. The resulting net gain of 2,900 was less than the previous year's 3,300 net gain because fewer people came to Scotland.

2.4 The overseas net gain of 25,400 came from an inflow of 42,300 and an outflow of 16,900. This compares with a net in-migration of 21,500 the previous year. Compared to the previous year, slightly fewer people came to Scotland from overseas but many fewer left; in 2009-10 the inflow was 46,100 and the outflow was 24,600. Estimating international migration is particularly difficult. The estimate is based primarily on the International Passenger Survey (IPS) which is a sample

survey conducted at main airports and ports across the UK. The sample size for Scotland is very small (around 220 contacts in 2010-11). Internationally, a migrant is defined as someone who changes country of usual residence for 12 months or more, so a short-term seasonal migrant worker will not be counted in the migration estimates or in the mid-year population estimates. More details about the migration data sources and definitions used can be found in [Section 5](#).

- 2.5 For comparison purposes it is better to look at a time frame of longer than one year, as population change tends to fluctuate from year to year, particularly for smaller areas. Over the last 10 years, between mid-2001 and mid-2011, Scotland's population increased by 3.8 per cent (+190,600) from 5.06 million ([Table 6](#)). [Figure 2](#) shows that in recent years migration has been the main reason for population change.

Figure 2: Natural change and net migration, 1951 to 2011

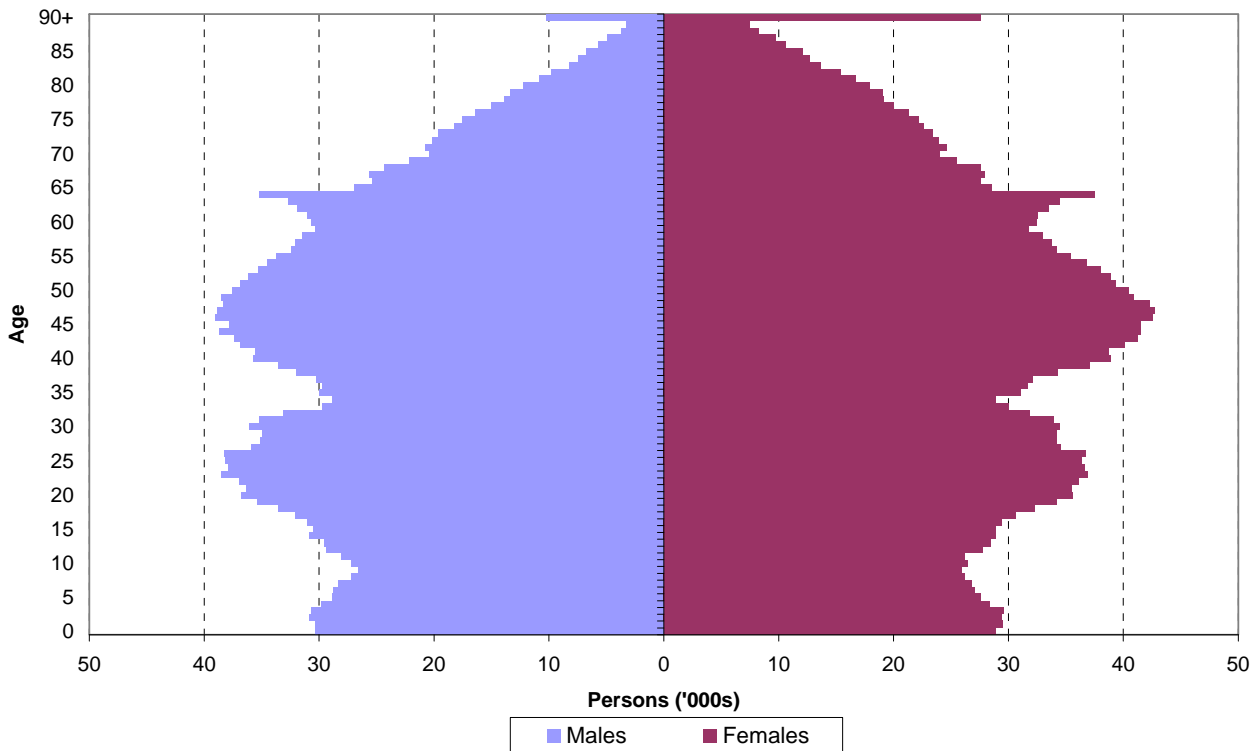


- 2.6 [Table 8](#) shows movements to and from the UK and overseas between mid-2010 and mid-2011 by age group. The main source of data for the overseas migration calculations is the International Passenger Survey but, because of its small sample size, an age and sex distribution is calculated from General Medical Practitioner (GP) registrations. The method used to estimate international migration is described in [Section 5](#).
- 2.7 Migrants to Scotland tend to be younger than the general population, as [Table 8](#) shows. Of in-migrants to Scotland, 49 per cent from the rest of the UK and 71 per cent of those from overseas were aged 16-34 years, yet in the resident population only 25 per cent were in this age group. Only 6 per cent of people coming to Scotland from the rest of the UK and 1 per cent of people entering from overseas were aged 65 and over. Scotland had a net gain of UK migrants in every age group, except those aged 25-34, and a net gain of international migrants for all ages under 55.

3. The age and sex structure of the population

3.1 The age and sex composition is one of the most important aspects of the population. Changes in different age groups will have different social and economic impacts. For example, increases in the elderly population are likely to place a greater demand on health and social services. Scotland's estimated population is shown by age and sex in Figure 3.

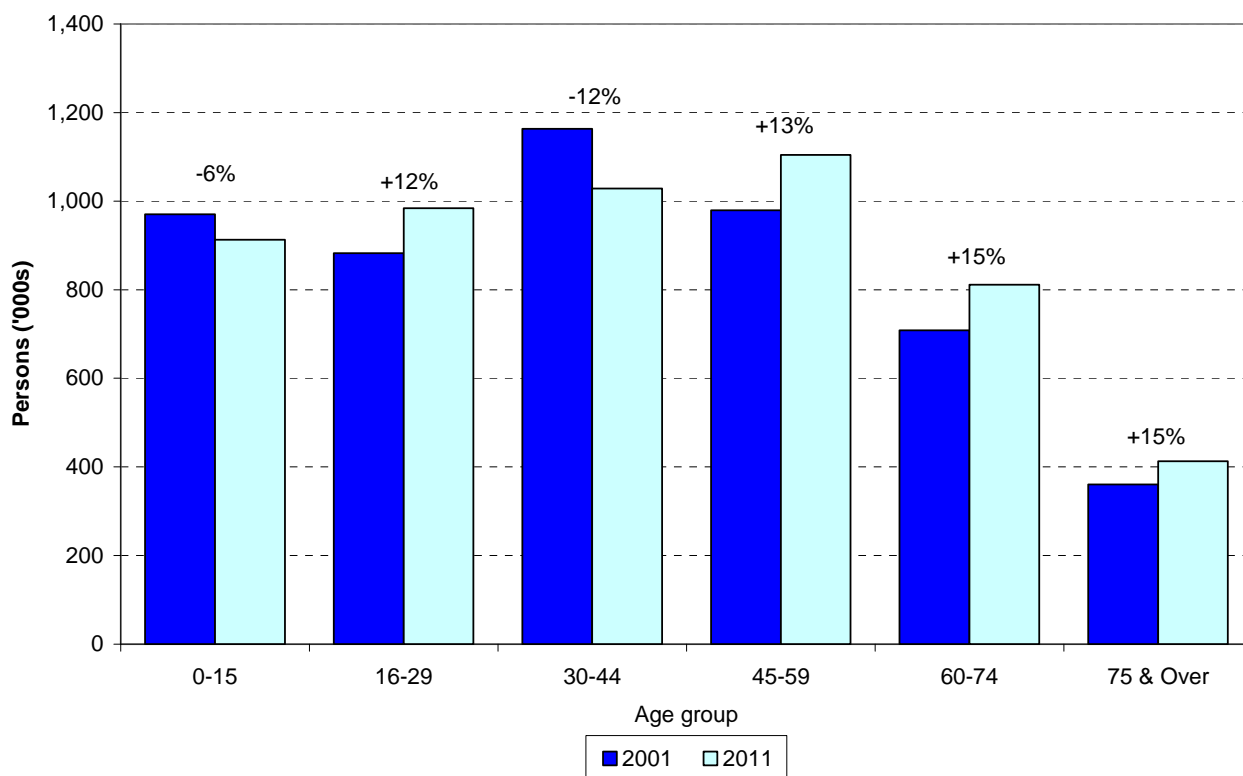
Figure 3: Estimated population by age and sex, mid-2011



3.2 Among older people, particularly over 75, the higher number of females reflects the longer expectation of life for women, partly as a result of higher rates of male mortality during the Second World War. The two baby booms of 1947 and the 1960s can also be seen with a sharp peak at age 64 and another peak between the ages of around 40 and 50. These baby boomers, along with relatively low fertility rates since the 1960s, are the main reasons why Scotland's population is likely to age in the future.

3.3 The changing age structure of the population since 2001 is illustrated in [Figure 4](#). The ageing of the population is evident in the rises in the older age groups (+13 per cent in the 45-59 age group, and +15 per cent in the 60-74 age group and 75 and over age group) and the falls in some of the younger age groups (-6 per cent in the under 16 age group and -12 per cent in the 30-44 age group).

Figure 4: The changing age structure of Scotland's population, mid-2001 to mid-2011



4. Estimates for administrative areas in Scotland

4.1 Population change mid-2010 to mid-2011

- 4.1.1 Population estimates for each Council and NHS Board area, together with details of the components of population change (births, deaths, net migration and other changes) for the period mid-2010 to mid-2011, are shown in [Table 2](#), [Table 3](#) and [Table 4](#).
- 4.1.2 Among Council areas, City of Edinburgh had the largest percentage population increase at +1.9 per cent followed by Aberdeen City and Midlothian (both +1.5 per cent), and Perth & Kinross (+1.2 per cent). Eight Council areas experienced a decrease in population although the decreases were very small for three Council areas. Larger decreases were experienced in Inverclyde (-0.7 per cent), Moray (-0.5 per cent), Eilean Siar (-0.4 per cent), West Dunbartonshire (-0.2 per cent) and Dumfries & Galloway (-0.1 per cent).
- 4.1.3 Of NHS Board areas, Lothian had the largest percentage population increase (+1.4 per cent), followed by Grampian (+0.9 per cent) and Tayside (+0.8 per cent). The only NHS Board areas to have experienced a decline in population were Western Isles (-0.4 per cent) and Dumfries & Galloway (-0.1 per cent).

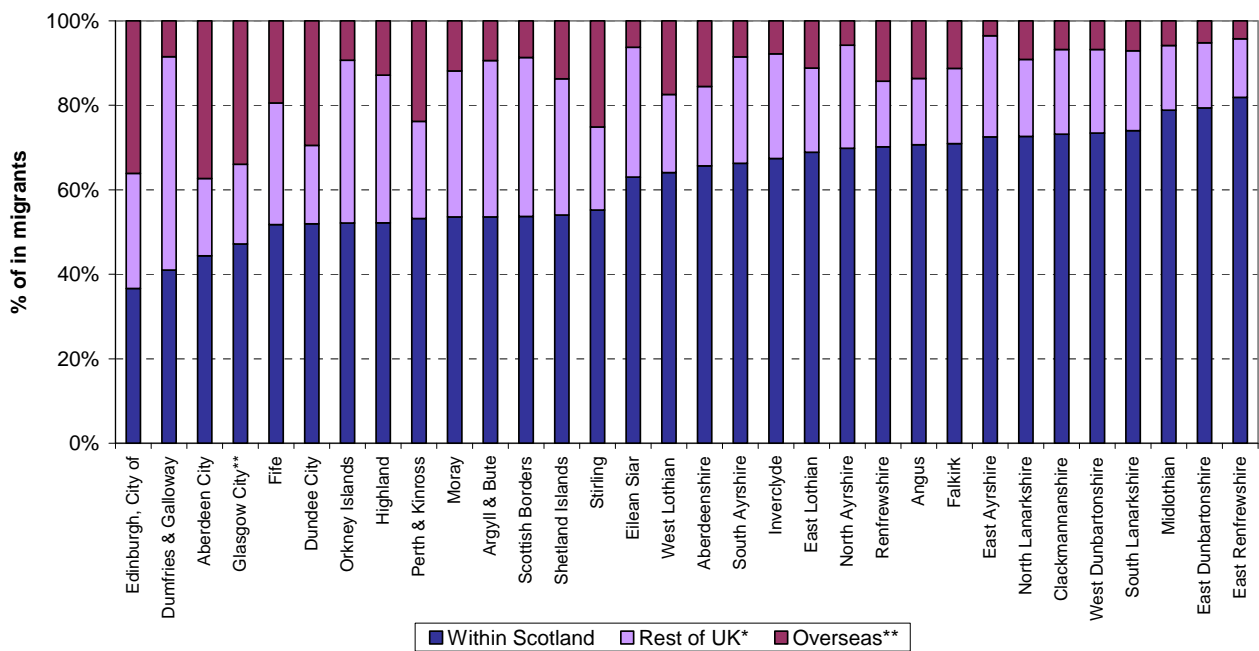
4.2 Components of migration mid-2010 to mid-2011

- 4.2.1 For most areas, the main cause of population change in the year to mid-2011 was migration. [Table 5](#) shows migration flows to and from each Council and NHS Board area for people moving within Scotland (i.e. between one Council area and another or between one NHS Board area and another), people moving between Scotland and the rest of the UK and people moving between Scotland and overseas. In [Table 5](#) and in [Figure 5a](#) and [Figure 5b](#), movements to and from the armed forces are included in the rest of UK figures.

4.3 In and out migration

- 4.3.1 As [Figure 5a](#) shows, different Council areas attract migrants from different areas. In some Council areas (such as East Renfrewshire, East Dunbartonshire and Midlothian) most of the migrants came from other Council areas within Scotland. For example, of the 3,196 people estimated to have arrived in East Renfrewshire, 2,617 (about 82 per cent) were from elsewhere in Scotland, 443 (about 14 per cent) from the rest of the UK and 136 (about 4 per cent) were from overseas.

Figure 5a: Origin of in-migrants by Council areas, mid-2010 to mid-2011 (ranked by increasing percentage of migrants from within Scotland)



* Includes moves from the armed forces

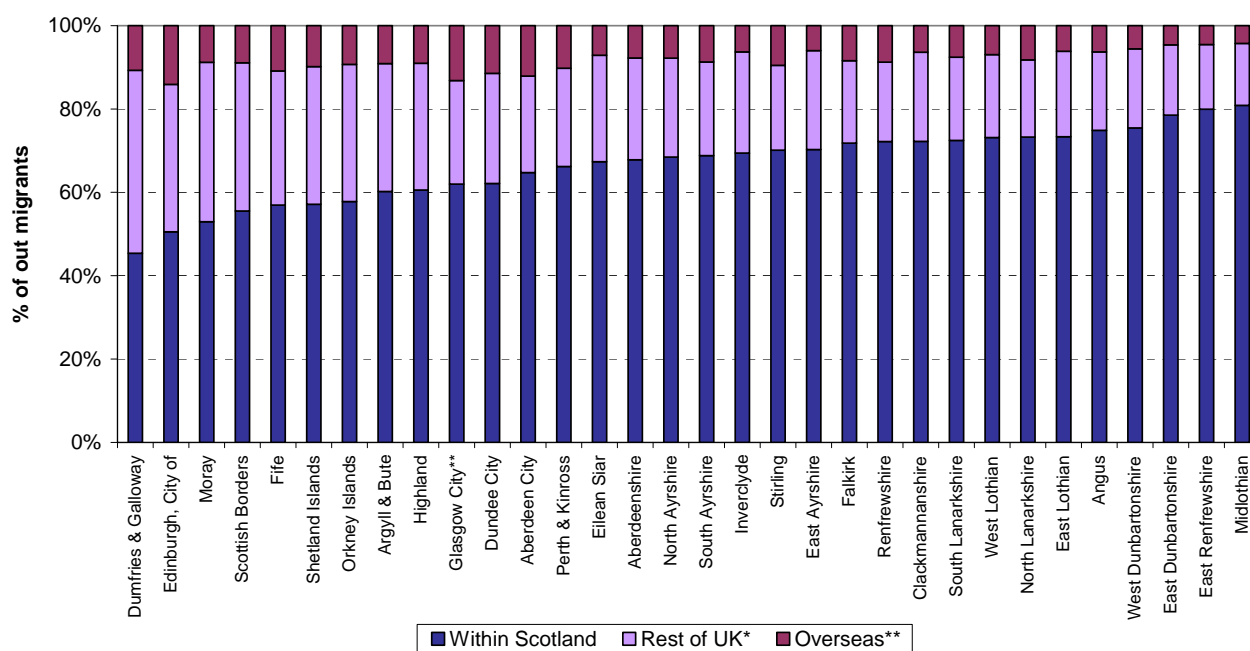
** Includes asylum seekers

4.3.2 In other areas (such as Dumfries & Galloway) more than half of the migrants entering the area came from outside Scotland with most of these coming from the rest of the UK.

4.3.3 In City of Edinburgh, Glasgow City and Aberdeen City, the pattern was of high proportions of migrants coming from outside Scotland but for these areas most migrants came from overseas.

4.3.4 As [Figure 5b](#) shows, there are also differences in the destinations of people migrating out of Council areas. Often the region to which most out-migrants moved was the same region from which most in-migrants had arrived. For example most of the migrants leaving East Renfrewshire, East Dunbartonshire and Midlothian moved elsewhere in Scotland and, as already described, most of the migrants arriving in these Council areas came from elsewhere in Scotland.

Figure 5b: Destination of out-migrants by Council areas, mid-2010 to mid-2011 (ranked by increasing percentage of migrants to within Scotland)



* Includes moves to the armed forces

** Includes asylum seekers returning to their country

4.4 Net migration

4.4.1 As Table 5 shows, some Council areas experienced net gains from one region but net losses to another whilst others experienced gains from all of the regions (within Scotland, the rest of the UK and overseas).

4.4.2 East Ayrshire experienced net losses of people to all regions, while East Lothian, Falkirk, Midlothian and Scottish Borders were among those to have a net gain of people from all regions.

4.4.3 The larger city authorities tended to lose migrants to other areas of Scotland but gain from overseas. For example, there was a net gain of 7,491 migrants in City of Edinburgh - comprising a net loss of 336 people to the rest of Scotland and net gains of 236 people from the rest of the UK and 7,591 people from overseas.

4.5 Population change mid-2001 to mid-2011

4.5.1 Details of population changes in administrative areas between 2001 and 2011 are shown in Table 6. These changes are illustrated for Council areas in the map at Figure 6a and the chart at Figure 6b which both show the percentage change in the population of Council areas between 2001 and 2011.

Figure 6a: Percentage change in population, Council areas, mid-2001 to mid-2011 (Map)

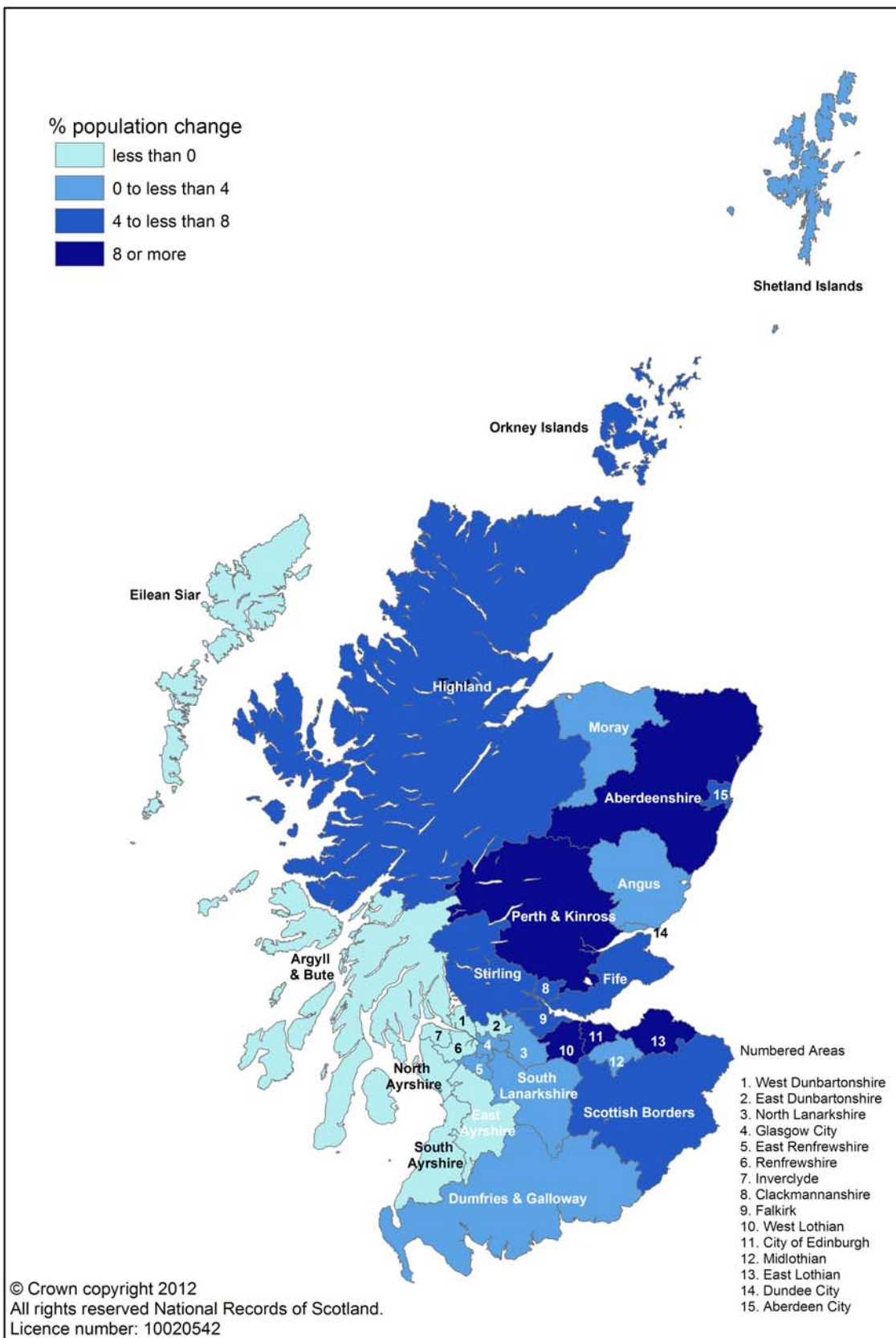
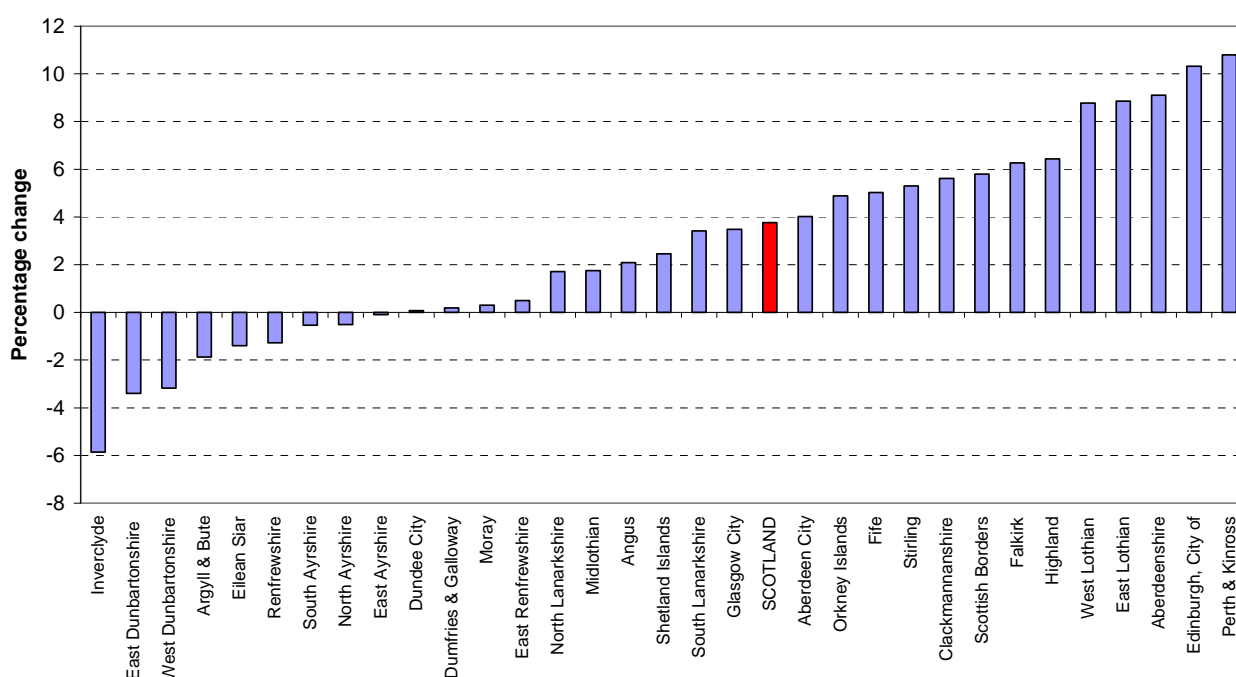


Figure 6b: Percentage change in population, Council areas, mid-2001 to mid-2011 (Chart)



4.5.2 Between 2001 and 2011, the Council areas with the largest percentage population growth were Perth & Kinross (+10.8 per cent), City of Edinburgh (+10.3 per cent) and Aberdeenshire (+9.1 per cent). The largest absolute increase in numbers was in City of Edinburgh (+46,340). Inverclyde (-5.9 per cent), East Dunbartonshire (-3.4 per cent) and West Dunbartonshire (-3.2 per cent) showed the greatest percentage decreases during this period. The largest absolute decrease in numbers was in Inverclyde (-4,930).

4.5.3 The map at [Figure 7a](#) and the chart at [Figure 7b](#) show the percentage change in population between 2001 and 2011 for each NHS Board area. The largest percentage increases in population were in Lothian (+9.0 per cent), Borders (+5.8 per cent) and Forth Valley (+5.8 per cent). The only areas to experience percentage decreases were Western Isles (-1.4 per cent) and Ayrshire & Arran (-0.4 per cent).

Figure 7a: Percentage change in population, NHS Board areas, mid-2001 to mid-2011 (Map)

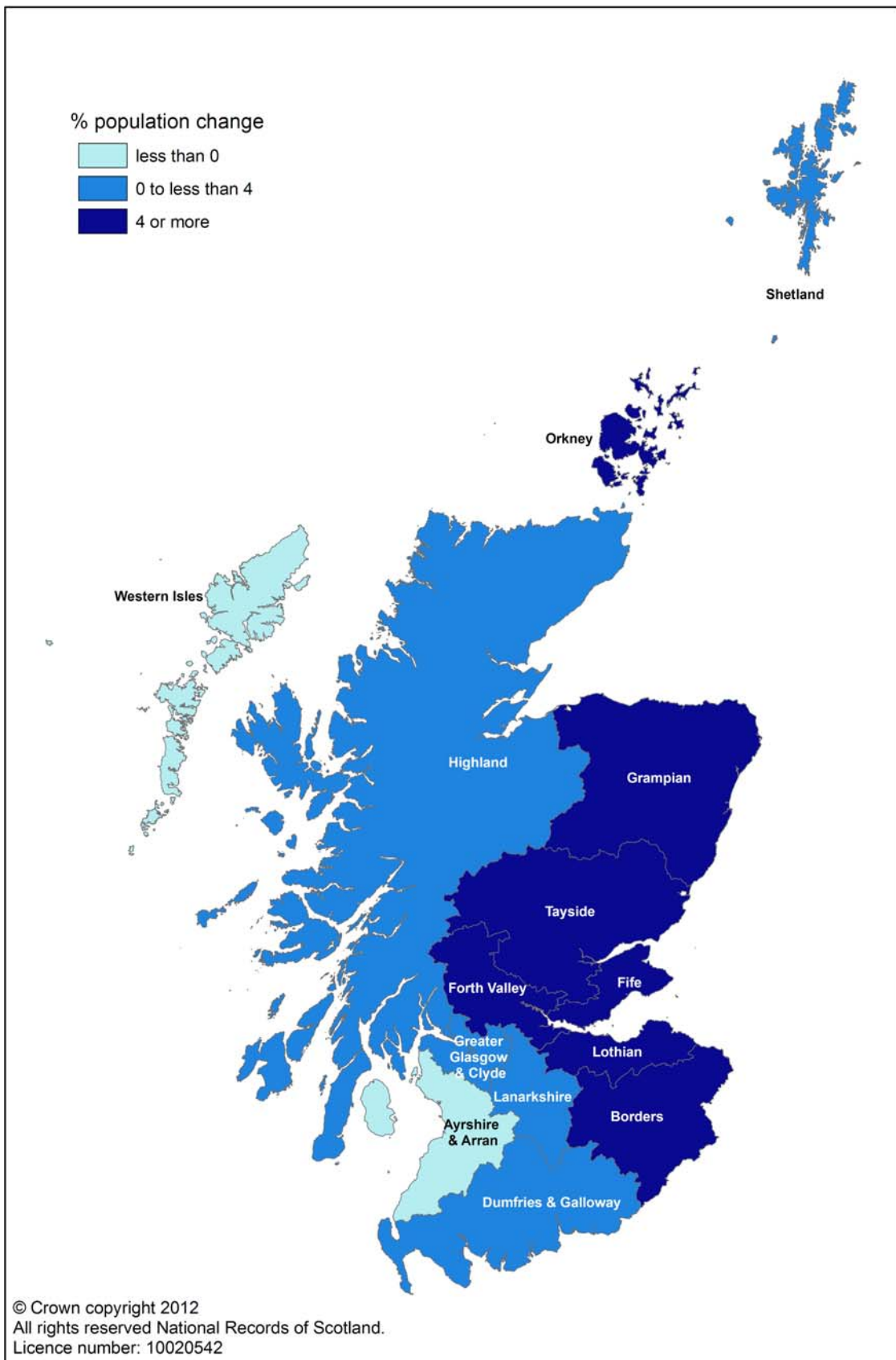
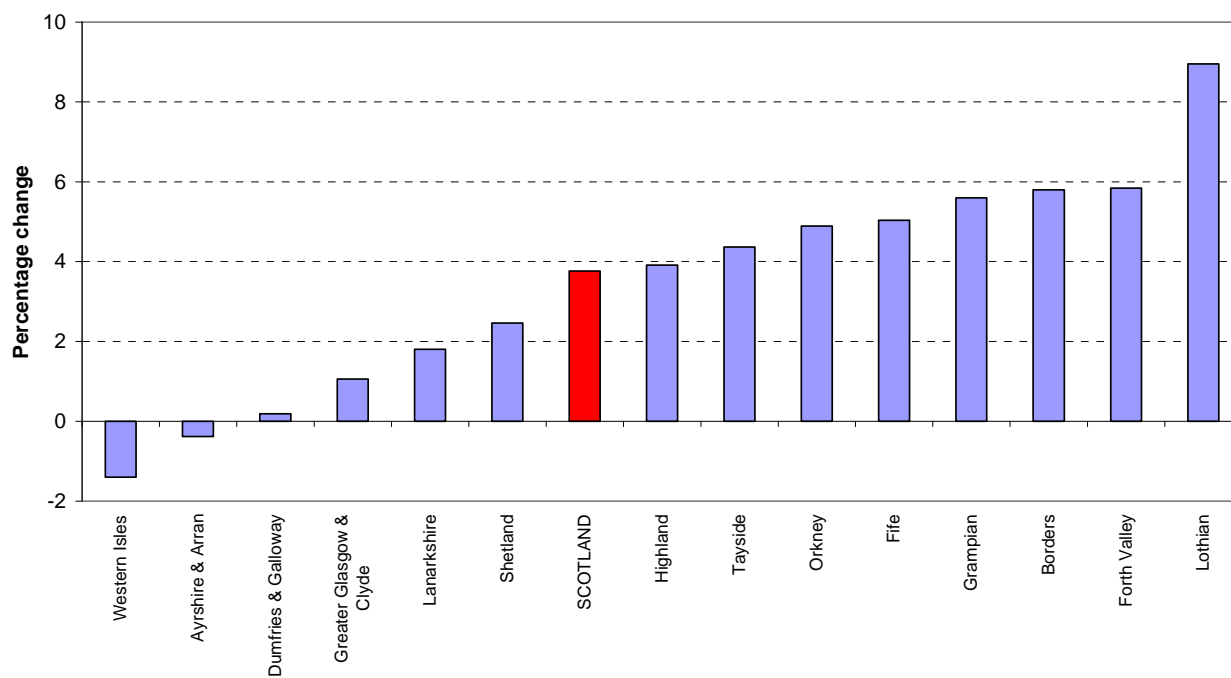


Figure 7b: Percentage change in population, NHS Board areas, mid-2001 to mid-2011 (Chart)



4.6 Age and sex structure of administrative areas in Scotland

- 4.6.1 There were more women than men in Scotland in mid-2011. This was the case for all Council areas other than Moray and Shetland Islands and for all NHS Board areas other than Shetland. [Table 7](#) shows the sex ratio for each Council and NHS Board area in Scotland. The sex ratio is the male population divided by the female population (e.g. a sex ratio of 0.95 means that for every 100 females there are 95 males). The sex ratio ranged from 0.90 in North Ayrshire to 1.03 in Shetland Islands. For the NHS Board areas, the sex ratio ranged from 0.92 in Ayrshire & Arran to 1.03 in Shetland.
- 4.6.2 Although the pattern of age distribution is complex, some general themes can be seen from [Table 7](#). Most city Council areas had a high proportion of men and women of working age. For example, in City of Edinburgh 72 per cent of men and 65 per cent of women were of working age compared with 67 per cent of men and 59 per cent of women for all of Scotland. The highest proportions of people of pensionable age tended to be in more rural areas such as Dumfries & Galloway (21 per cent of men and 31 per cent of women) and Argyll & Bute (20 per cent of men and 31 per cent of women). In Scotland as a whole, 15 per cent of men and 24 per cent of women were of pensionable age.
- 4.6.3 These patterns can also be seen in [Figure 8](#) and [Figure 9](#) which show the proportion of the population aged under 16, 16-64, and 65 and over for Council and NHS Board areas respectively (ranked by the proportion of population aged 65 and over).

Figure 8: Age structure of Council areas, mid-2011 (ranked by percentage aged 65+)

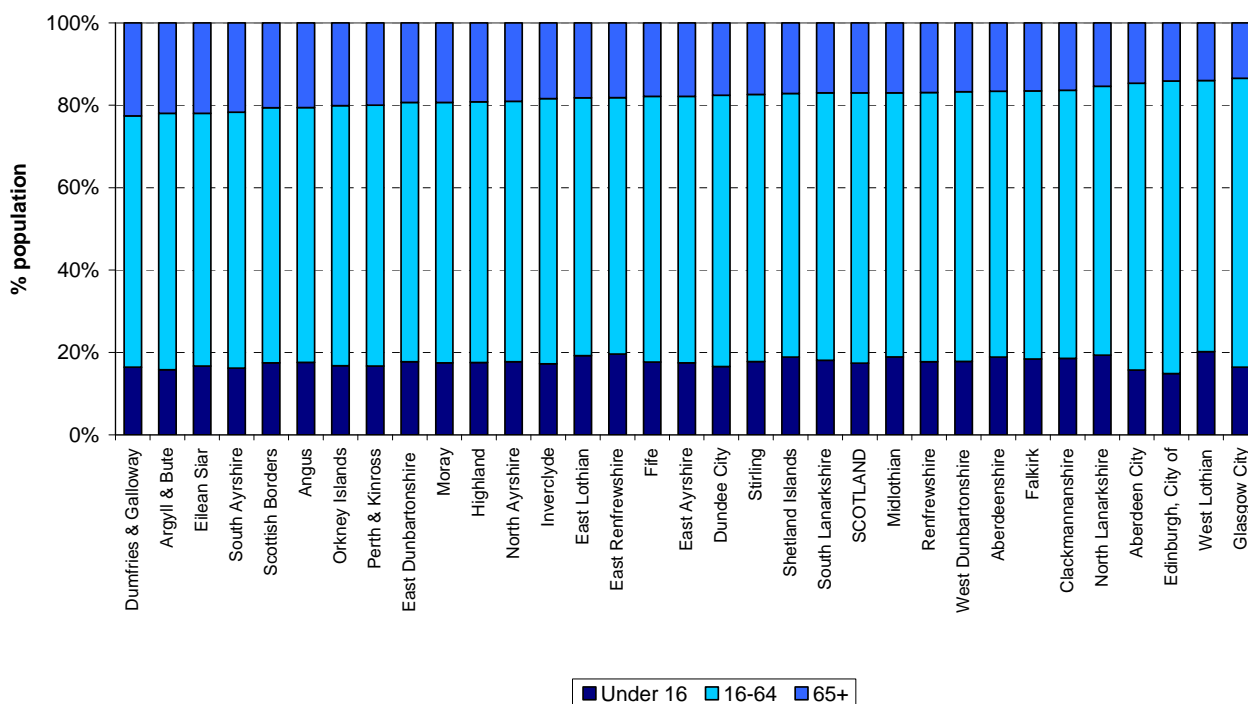
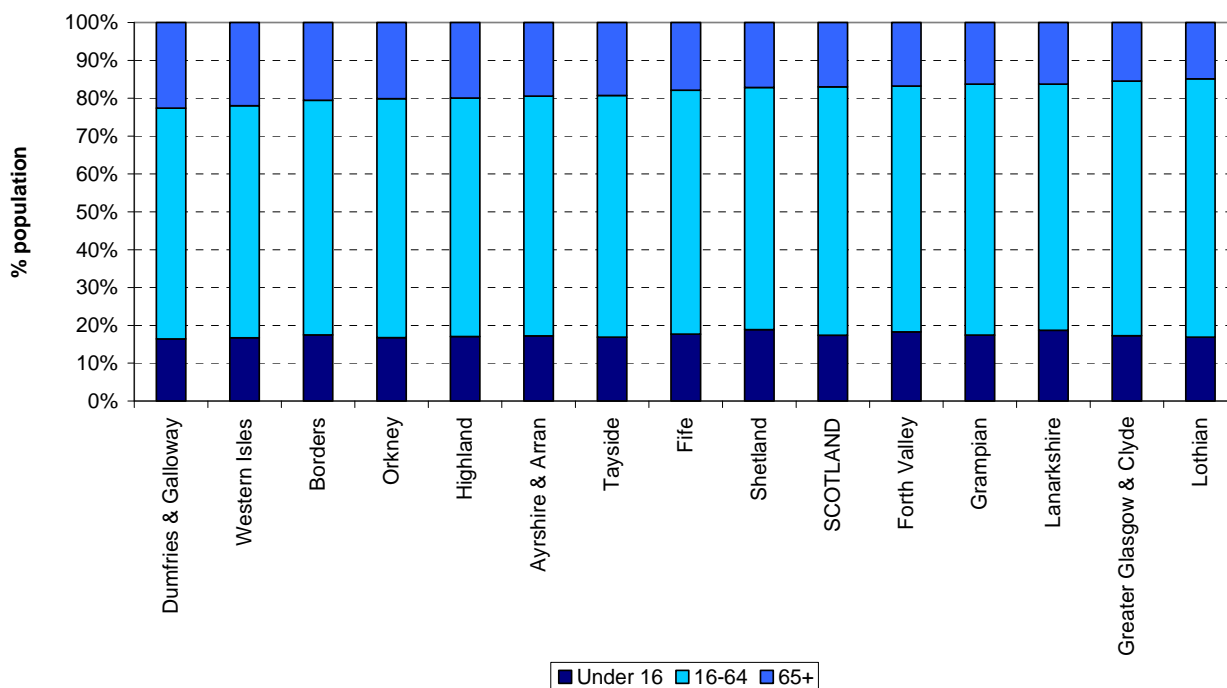


Figure 9: Age structure of NHS Board areas, mid-2011 (ranked by percentage aged 65+)



4.7 Population density

4.7.1 Information on land areas and population densities is shown in [Table 9](#). The mid-2011 population density was 67 persons per square kilometre for Scotland and ranged from 8 people per square kilometre in Eilean Siar to 3,412 people per square kilometre in Glasgow City.

Table 1: Estimated population by age and sex, Scotland, mid-2011

Age	Persons	Males	Females	Age	Persons	Males	Females	Age	Persons	Males	Females
All ages	5,254,800	2,548,200	2,706,600								
0	59,176	30,309	28,867	30	70,497	36,049	34,448	60	63,112	30,677	32,435
1	59,826	30,326	29,500	31	69,189	35,218	33,971	61	63,608	31,055	32,553
2	60,308	30,872	29,436	32	64,933	33,101	31,832	62	65,419	31,879	33,540
3	60,276	30,686	29,590	33	59,733	29,698	30,035	63	67,137	32,644	34,493
4	58,155	29,782	28,373	34	57,748	28,862	28,886	64	72,711	35,218	37,493
0 - 4	297,741	151,975	145,766	30 - 34	322,100	162,928	159,172	60 - 64	331,987	161,473	170,514
5	56,446	28,845	27,601	35	61,057	29,959	31,098	65	55,438	26,920	28,518
6	55,870	28,786	27,084	36	61,451	29,745	31,706	66	52,935	25,327	27,608
7	55,103	28,345	26,758	37	62,336	30,219	32,117	67	53,614	25,661	27,953
8	53,458	27,239	26,219	38	66,306	31,994	34,312	68	51,892	24,337	27,555
9	52,497	26,617	25,880	39	70,561	33,519	37,042	69	47,654	22,199	25,455
5 - 9	273,374	139,832	133,542	35 - 39	321,711	155,436	166,275	65 - 69	261,533	124,444	137,089
10	53,632	27,180	26,452	40	74,600	35,717	38,883	70	44,407	20,406	24,001
11	54,291	28,089	26,202	41	74,276	35,523	38,753	71	45,448	20,808	24,640
12	57,066	29,331	27,735	42	76,996	36,897	40,099	72	44,119	20,163	23,956
13	58,032	29,591	28,441	43	78,610	37,366	41,244	73	42,962	19,580	23,382
14	59,755	30,830	28,925	44	80,161	38,699	41,462	74	40,844	18,251	22,593
10 - 14	282,776	145,021	137,755	40 - 44	384,643	184,202	200,441	70 - 74	217,780	99,208	118,572
15	59,426	30,498	28,928	45	79,297	37,840	41,457	75	39,747	17,538	22,209
16	60,437	31,005	29,432	46	81,607	39,052	42,555	76	37,747	16,402	21,345
17	62,655	32,058	30,597	47	81,541	38,830	42,711	77	35,075	15,040	20,035
18	65,832	33,567	32,265	48	80,672	38,339	42,333	78	33,079	13,909	19,170
19	69,530	35,332	34,198	49	79,435	38,517	40,918	79	32,351	13,342	19,009
15 - 19	317,880	162,460	155,420	45 - 49	402,552	192,578	209,974	75 - 79	177,999	76,231	101,768
20	72,385	36,788	35,597	50	78,066	37,587	40,479	80	30,141	12,268	17,873
21	71,771	36,318	35,453	51	76,163	36,875	39,288	81	27,550	10,804	16,746
22	73,116	36,986	36,130	52	75,116	36,188	38,928	82	25,192	9,802	15,390
23	75,357	38,501	36,856	53	73,356	35,319	38,037	83	21,871	8,255	13,616
24	74,509	37,880	36,629	54	71,330	34,535	36,795	84	20,091	7,410	12,681
20 - 24	367,138	186,473	180,665	50 - 54	374,031	180,504	193,527	80 - 84	124,845	48,539	76,306
25	74,513	38,119	36,394	55	69,122	33,741	35,381	85	18,832	6,724	12,108
26	75,003	38,239	36,764	56	66,591	32,387	34,204	86	16,345	5,718	10,627
27	70,533	35,950	34,583	57	65,784	32,080	33,704	87	14,579	4,889	9,690
28	69,251	35,085	34,166	58	64,448	31,467	32,981	88	11,950	3,730	8,220
29	69,133	34,928	34,205	59	62,102	30,326	31,776	89	10,726	3,271	7,455
25 - 29	358,433	182,321	176,112	55 - 59	328,047	160,001	168,046	85 - 89	72,432	24,332	48,100
								90 & over	37,798	10,242	27,556

Age group summaries

	Count			Percentage of all ages		
	Persons	Males	Females	Persons	Males	Females
All aged under 16	913,317	467,326	445,991	17	18	16
All aged under 18	1,036,409	530,389	506,020	20	21	19
All aged 16 & over	4,341,483	2,080,874	2,260,609	83	82	84
All aged 18 & over	4,218,391	2,017,811	2,200,580	80	79	81
Working age ¹	3,299,643	1,697,878	1,601,765	63	67	59
Pension age ²	1,041,840	382,996	658,844	20	15	24
All aged 75 & over	413,074	159,344	253,730	8	6	9

Footnotes

1) Working age at 30 June 2011 is defined as men aged 16 to 64 and women aged 16 to approximately 60 years and 237 days

2) Pensionable age at 30 June 2011 was 65 for men and approximately 60 years and 238 days for women.

Table 2: Estimated population by sex, single year of age and administrative area, mid-2011

Persons Area	Age																																
	All Ages	0	1	2	3	4	5	6	7	8	9	10	11	12	13	14	15	16	17	18	19	20	21	22	23	24	25	26	27	28	29	30	
Scotland	5,254,800	59,176	59,826	60,308	60,276	58,155	56,446	55,870	55,103	53,458	52,497	53,632	54,291	57,066	58,032	59,755	59,426	60,437	62,655	65,832	69,530	72,385	71,771	73,116	75,357	74,509	74,513	75,003	70,533	69,251	69,133	70,497	
Council areas																																	
Aberdeen City	220,420	2,643	2,626	2,502	2,450	2,341	2,174	2,115	1,951	1,982	1,945	1,983	1,958	2,023	1,962	2,044	2,017	2,143	2,352	2,851	3,376	3,952	3,997	4,014	4,240	4,221	4,336	4,205	3,980	4,147	4,079	3,849	
Aberdeenshire	247,600	2,802	3,017	3,065	3,006	2,941	2,965	2,897	2,815	2,728	2,741	2,940	3,041	2,984	3,056	3,009	3,017	3,104	2,948	2,718	2,771	2,633	2,640	2,629	2,686	2,565	2,621	2,508	2,377	2,421	2,621		
Angus	110,630	1,114	1,213	1,191	1,231	1,244	1,155	1,196	1,196	1,143	1,189	1,208	1,228	1,281	1,361	1,311	1,323	1,323	1,258	1,263	1,265	1,156	1,182	1,125	1,155	1,155	1,163	1,066	994	999	1,002		
Argyll & Bute	89,590	784	827	836	802	816	783	795	892	798	869	840	866	1,037	997	1,090	1,096	1,069	1,078	1,020	1,029	1,021	1,050	1,072	957	960	1,007	953	888	854	726	796	
Clackmannanshire	50,770	598	609	604	662	592	602	577	551	518	564	571	547	569	592	619	642	648	628	692	648	614	584	607	662	687	613	574	578	529	542	574	
Dumfries & Galloway	148,060	1,457	1,540	1,468	1,530	1,576	1,521	1,498	1,422	1,436	1,335	1,421	1,420	1,536	1,731	1,635	1,768	1,780	1,817	1,627	1,599	1,611	1,537	1,546	1,572	1,564	1,451	1,465	1,338	1,175	1,269	1,301	
Dundee City	145,570	1,742	1,702	1,757	1,707	1,517	1,442	1,548	1,451	1,408	1,356	1,330	1,301	1,321	1,463	1,533	1,508	1,465	1,691	2,466	2,649	2,939	2,694	2,762	2,877	2,827	2,732	2,729	2,240	2,052	2,128	2,317	
East Ayrshire	120,200	1,329	1,345	1,421	1,328	1,322	1,315	1,258	1,321	1,268	1,215	1,267	1,277	1,257	1,355	1,377	1,363	1,471	1,509	1,584	1,570	1,566	1,554	1,588	1,542	1,543	1,542	1,458	1,270	1,263	1,336	1,249	
East Dunbartonshire	104,570	1,014	952	1,039	1,087	1,045	1,113	1,105	1,116	1,163	1,135	1,167	1,176	1,305	1,405	1,315	1,394	1,353	1,395	1,340	1,368	1,339	1,304	1,287	1,187	1,159	1,190	1,221	1,071	1,055	954	989	
East Lothian	98,170	1,138	1,148	1,156	1,283	1,191	1,223	1,169	1,184	1,031	1,099	1,079	1,188	1,198	1,236	1,308	1,237	1,240	1,280	1,266	1,219	1,187	1,126	1,190	1,075	1,121	1,069	1,032	812	913	912	807	
East Renfrewshire	89,850	893	972	974	1,023	1,023	1,066	1,120	1,114	1,097	1,086	1,141	1,161	1,222	1,269	1,270	1,211	1,297	1,291	1,169	1,121	1,095	1,097	1,158	1,035	984	953	920	947	776	772	793	
Edinburgh, City of	495,360	5,675	5,328	5,516	5,388	4,802	4,510	4,273	4,263	4,169	4,091	4,031	4,130	4,310	4,374	4,246	4,534	4,565	5,165	6,343	7,201	8,107	8,630	9,260	9,670	9,759	9,941	10,701	10,420	10,579	10,925	10,628	
Eilean Siar	26,080	229	226	262	256	300	256	244	284	281	251	254	279	310	280	319	328	306	301	273	255	213	241	225	233	215	225	244	199	190	207	238	
Falkirk	154,380	1,786	1,938	1,919	1,943	1,848	1,766	1,767	1,678	1,709	1,584	1,680	1,668	1,751	1,793	1,831	1,705	1,862	1,903	2,052	2,019	2,176	1,838	1,765	1,920	1,765	1,720	1,858	1,606	1,740	1,949	1,954	
Fife	367,370	4,264	4,284	4,283	4,353	4,113	4,067	3,984	3,948	3,801	3,681	3,951	3,787	4,109	4,024	4,145	4,203	4,376	4,543	4,807	4,981	5,513	5,577	5,476	5,368	4,987	4,754	4,520	4,200	3,986	4,043	4,224	
Glasgow City	598,830	7,496	7,492	7,052	6,892	6,483	6,253	6,054	5,820	5,597	5,325	5,449	5,424	5,470	5,662	5,902	5,745	6,126	6,357	7,503	9,063	9,565	10,008	10,690	11,555	11,740	12,142	12,394	11,837	12,366	11,720	11,850	
Highland	222,370	2,397	2,409	2,524	2,493	2,403	2,390	2,342	2,348	2,274	2,252	2,405	2,271	2,540	2,620	2,612	2,662	2,651	2,548	2,369	2,328	2,266	2,177	2,241	2,324	2,353	2,349	2,405	2,293	2,096	2,173	2,529	
Inverclyde	79,220	795	813	830	871	873	818	894	851	820	755	814	819	893	891	963	954	944	950	918	1,029	1,031	1,020	999	1,052	1,019	1,089	1,044	965	942	843	900	
Midlothian	82,370	992	1,025	994	1,006	981	1,014	932	917	925	835	957	972	1,044	1,003	1,024	973	1,010	1,049	989	1,146	1,124	1,021	1,023	1,116	1,032	1,031	973	901	888	918	845	
Moray	87,260	974	963	982	1,022	980	894	875	843	856	779	898	911	958	1,072	1,087	1,159	1,157	1,161	1,061	1,058	1,027	963	1,104	1,021	1,028	931	994	917	814	768	722	
North Ayrshire	135,130	1,473	1,430	1,499	1,530	1,516	1,491	1,454	1,465	1,487	1,423	1,464	1,445	1,433	1,552	1,639	1,661	1,722	1,750	1,683	1,692	1,801	1,643	1,675	1,749	1,624	1,557	1,515	1,330	1,373	1,377	1,453	
North Lanarkshire	326,680	3,908	4,009	4,158	4,127	4,091	3,866	3,935	3,910	3,792	3,778	3,680	3,709	4,012	3,969	4,178	4,037	3,893	4,082	3,959	4,275	4,247	4,116	4,153	4,203	4,225	4,248	4,415	4,197	4,147	4,173	4,152	
Orkney Islands	20,160	205	212	220	203	210	217	202	188	192	208	168	198	238	203	262	253	274	264	201	207	206	239	186	203	195	206	216	182	177	170	201	
Perth & Kinross	149,520	1,463	1,498	1,548	1,530	1,492	1,408	1,503	1,477	1,493	1,456	1,606	1,579	1,645	1,755	1,815	1,716	1,768	1,765	1,736	1,700	1,750	1,682	1,890	2,013	2,147	2,278	2,128	2,082	1,812	1,773	1,719	
Renfrewshire	170,650	1,884	1,999	1,864	1,964	1,900	1,898	1,890	1,866	1,761	1,788	1,844	1,809	1,869	1,889	2,022	1,968	1,988	2,011	2,057	2,141	2,215	2,218	2,141	2,324	2,336	2,254	2,225	2,146	2,195	2,090	2,323	
Scottish Borders	113,150	1,148	1,177	1,226	1,239	1,252	1,185	1,250	1,234	1,210	1,229	1,183	1,266	1,235	1,237	1,324	1,368	1,379	1,269	1,305	1,214	1,259	1,195	1,105	1,172	1,045	1,049	981	960	910	841	1,008	
Shetland Islands	22,500	268	280	284	232	265	275	248	247	263	239	249	295	251	286	291	273	304	273	277	254	228	259	233	229	251	257	259	211	209	211	254	
South Ayrshire	111,560	1,112	1,083	1,118	1,132	1,104	1,070	1,111	1,094	1,017	1,104	1,107	1,101	1,200	1,240	1,231	1,237	1,218	1,301	1,283	1,299	1,285	1,404	1,285	1,297	1,308	1,281	1,243	1,230	967	1,048	1,150	
South Lanarkshire	312,660	3,507	3,544	3,624	3,643	3,554	3,548	3,481	3,446	3,261	3,343	3,289	3,527	3,640	3,592	3,829	3,678	3,697	3,962	3,852	3,981	3,947	3,785	3,636	3,938	3,764	3,893	3,968	3,836	3,662	3,672	3,815	
Stirling	90,770	795	917	954	916	992	956	971	1,041	988	911	1,020	1,033	1,178	1,160	1,199	1,117	1,123	1,255	1,562	1,832	1,773	1,685	1,583	1,669	1,277	1,116	1,075	1,037	885	866	889	
West Dunbartonshire	90,360	1,053	1,050	1,087	1,125	1,074	993	985	965	918	916	876	972	962	986	1,065	1,065	1,074	1,096	1,173	1,198	1,184	1,209	1,222	1,228	1,215	1,272	1,344	1,270	1,162	1,136	1,211	
West Lothian	172,990	2,238	2,198	2,351	2,302	2,314	2,212	2,197	2,185	1,994	2,074	1,978	2,054	2,281	2,169	2,163	2,234	2,194	2,182	2,208	2,097	2,108	2,119	2,178	2,172	2,317	2,307	2,160	2,016	2,016	2,092	2,134	
NHS Board areas																																	
Ayrshire & Arran	366,890	3,914	3,858	4,038	3,990	3,942	3,876	3,823	3,880	3,772	3,742	3,838	3,823	3,890	4,147	4,247	4,261	4,411	4,560	4,550	4,561	4,652	4,601	4,548	4,588	4,475	4,380	4,216	3,830	3,603	3,761	3,852	
Borders	113,150	1,148	1,177	1,226	1,239	1,252	1,185	1,250	1,234	1,210	1,229	1,183	1,266	1,235	1,237	1,324	1,368	1,379	1,269	1,305	1,214	1,259	1,195	1,105	1,172	1,045	1,049	981	960	910	841	1,008	
Dumfries & Galloway	148,060	1,457	1,540	1,468	1,530	1,576	1,521	1,498	1,422	1,436	1,335	1,421	1																				

Table 2 (continued)

Males																																	
Area	All Ages	Age																															
		0	1	2	3	4	5	6	7	8	9	10	11	12	13	14	15	16	17	18	19	20	21	22	23	24	25	26	27	28	29	30	
Scotland	2,548,200	30,309	30,326	30,872	30,686	29,782	28,845	28,786	28,345	27,239	26,617	27,180	28,089	29,331	29,591	30,830	30,498	31,005	32,058	33,567	35,332	36,788	36,318	36,986	38,501	37,880	38,119	38,239	35,950	35,085	34,928	36,049	
Council areas																																	
Aberdeen City	109,253	1,374	1,338	1,292	1,259	1,165	1,108	1,027	991	1,029	963	1,019	1,065	1,058	1,038	1,090	1,067	1,106	1,168	1,350	1,536	1,701	1,766	1,863	1,996	2,012	2,131	2,152	2,081	2,195	2,216	2,214	
Aberdeenshire	122,918	1,430	1,527	1,549	1,568	1,527	1,532	1,482	1,470	1,379	1,154	1,580	1,541	1,558	1,610	1,614	1,553	1,537	1,611	1,559	1,386	1,493	1,406	1,423	1,372	1,442	1,331	1,341	1,296	1,214	1,239	1,316	
Angus	53,684	562	579	589	603	650	595	612	618	606	579	595	626	659	658	696	655	658	716	655	665	751	631	609	579	569	627	620	589	490	501	513	
Argyll & Bute	44,618	425	403	424	406	431	396	423	462	418	420	417	448	505	527	580	543	587	561	521	561	592	577	634	556	534	609	511	533	466	422	471	
Clackmannanshire	24,855	308	292	311	331	308	311	305	291	266	308	278	265	312	295	321	313	336	301	349	335	290	335	334	330	375	340	322	327	279	262	305	
Dumfries & Galloway	71,663	747	791	713	761	834	763	779	731	722	692	751	738	794	856	815	934	903	949	825	844	816	838	799	829	800	765	774	640	596	588	670	
Dundee City	69,453	921	863	932	846	759	731	821	747	737	686	679	640	660	754	783	787	768	857	1,133	1,168	1,330	1,260	1,364	1,413	1,430	1,388	1,428	1,175	1,115	1,086	1,194	
East Ayrshire	58,230	674	685	721	708	692	679	658	687	645	582	658	626	623	740	734	701	796	760	824	789	767	823	854	825	768	774	724	642	652	657	592	
East Dunbartonshire	50,416	519	506	539	565	521	564	576	598	610	577	593	631	672	766	659	735	707	744	736	700	750	727	709	641	636	625	650	570	543	519	525	
East Lothian	47,149	565	580	594	654	593	647	620	571	532	564	529	603	613	604	647	645	625	656	632	646	608	627	557	582	608	545	531	397	446	407	411	
East Renfrewshire	43,091	471	489	505	530	534	531	560	566	560	564	598	606	656	670	617	616	686	648	585	624	583	599	644	558	563	498	506	522	396	390	414	
Edinburgh, City of	239,722	2,857	2,665	2,783	2,739	2,444	2,350	2,226	2,239	2,173	2,116	2,060	2,117	2,187	2,214	2,308	2,347	2,376	2,576	3,179	3,475	3,915	3,995	4,464	4,686	4,618	4,906	5,180	5,028	5,170	5,433	5,271	
Eilean Siar	12,818	125	125	142	140	157	130	123	133	141	123	118	157	159	136	158	159	149	145	151	154	127	147	124	126	136	116	138	95	108	96	102	
Falkirk	74,885	931	950	944	939	956	879	917	861	880	834	836	890	881	920	967	876	946	1,014	1,131	1,115	1,185	922	890	952	920	869	873	774	787	978	976	
File	177,347	2,190	2,246	2,195	2,244	2,092	2,041	2,021	2,042	1,962	1,861	2,002	2,026	2,159	1,942	2,133	2,160	2,199	2,261	2,386	2,545	2,770	2,748	2,600	2,701	2,456	2,498	2,392	2,138	1,973	2,096	2,062	
Glasgow City	290,557	3,819	3,703	3,598	3,484	3,241	3,236	3,137	3,002	2,799	2,691	2,758	2,806	2,788	2,869	3,014	2,971	3,180	3,331	3,735	4,444	4,648	5,005	5,303	5,836	5,971	6,212	6,277	6,024	6,340	5,975	6,220	
Highland	109,138	1,221	1,240	1,356	1,280	1,228	1,238	1,210	1,190	1,149	1,141	1,243	1,185	1,363	1,348	1,368	1,337	1,361	1,333	1,237	1,275	1,270	1,187	1,198	1,242	1,253	1,237	1,267	1,227	1,030	1,052	1,274	
Inverclyde	37,840	426	414	448	481	455	414	473	437	424	388	420	431	450	478	492	480	470	454	491	556	556	517	537	532	530	578	516	504	472	404	479	
Midlothian	39,321	493	537	532	485	515	516	485	485	487	432	467	465	496	530	503	540	520	527	511	598	580	517	549	569	544	502	495	444	464	435	383	
Moray	43,806	506	485	540	516	507	485	415	425	442	429	460	493	505	564	547	606	616	604	560	578	608	534	626	581	554	514	547	484	421	395	412	
North Ayrshire	64,148	735	727	769	777	786	772	769	738	779	713	723	737	714	770	839	842	884	887	902	875	948	875	879	894	875	782	737	628	683	668	714	
North Lanarkshire	157,301	1,984	2,024	2,095	2,141	2,125	2,004	2,036	2,009	1,924	1,927	1,850	1,889	2,093	1,993	2,125	2,071	2,010	2,135	2,055	2,248	2,204	2,135	2,049	2,235	2,113	2,106	2,180	2,095	2,106	2,137	2,033	
Orkney Islands	9,966	101	109	124	101	113	103	97	100	91	92	84	94	137	114	148	142	125	116	87	110	116	130	117	103	100	105	116	89	95	85	103	
Perth & Kinross	73,545	752	755	798	808	749	701	782	774	767	762	776	825	845	921	921	833	882	921	903	966	992	931	1,031	1,093	1,183	1,207	1,112	1,136	1,025	962	950	
Renfrewshire	81,823	922	1,021	992	978	977	972	954	925	892	885	926	899	957	976	1,107	992	1,029	1,054	1,074	1,039	1,147	1,132	1,071	1,178	1,195	1,120	1,177	1,090	1,084	1,071	1,230	
Scottish Borders	54,925	638	578	618	597	624	636	643	637	616	605	607	629	648	599	700	696	697	643	648	638	616	611	584	612	515	544	503	484	431	387	507	
Shetland Islands	11,405	138	160	144	128	137	121	151	135	137	127	121	157	113	142	143	134	152	148	151	160	123	126	116	145	135	149	105	112	116	133		
South Ayrshire	53,536	574	549	576	596	555	527	539	549	511	582	578	609	603	628	618	628	617	630	683	652	696	730	682	675	641	650	636	616	525	520	563	
South Lanarkshire	149,883	1,766	1,816	1,776	1,850	1,842	1,760	1,776	1,779	1,605	1,678	1,646	1,795	1,837	1,820	1,965	1,911	1,854	1,990	1,977	2,055	2,074	2,003	1,843	2,057	1,958	1,983	2,051	1,919	1,864	1,873	1,884	
Stirling	43,325	403	488	494	467	519	483	506	546	502	476	503	519	630	600	600	574	590	621	761	856	833	813	768	833	618	610	539	569	464	399	453	
West Dunbartonshire	42,967	541	545	556	553	553	502	526	501	457	441	452	465	495	495	564	559	539	589	591	653	611	624	623	635	666	639	674	660	592	534	605	
West Lothian	84,612	1,191	1,136	1,223	1,151	1,193	1,118	1,137	1,106	973	1,000	1,018	1,073	1,178	1,066	1,054	1,127	1,140	1,108	1,185	1,086	1,088	1,066	1,132	1,164	1,152	1,176	1,121	1,069	947	1,020	1,070	
NHS Board areas																																	
Ayrshire & Arran	175,914	1,983	1,961	2,066	2,081	2,033	1,978	1,966	1,974	1,935	1,877	1,959	1,972	1,940	2,138	2,191	2,171	2,297	2,277	2,409	2,316	2,411	2,428	2,415	2,394	2,284	2,206	2,097	1,886	1,860	1,845	1,869	
Borders	54,925	638	578	618	597	624	636	643	637	616	605	607	629	648	599	700	696	697	643	648	638	616	611	584	612	515	544	503	484	431	387	507	
Dumfries & Galloway	71,663	747	791	713	761	834	763	779	731	722	692	751	738	794	856	815	934	903	949	825	844	816	838	799	829	800	765	774	640	596	588	670	
File	177,309	2,190	2,246	2,195	2,244	2,092	2,041	2,021	2,042	1,962	1,861	2,000	2,027	2,160	1,941	2,131	2,158	2,198	2,260	2,385	2,544	2,770	2,747	2,600	2,700	2,456	2,498	2,391	2,138	1,973	2,095	2,061	
Forth Valley	142,878	1,642	1,729	1,749	1,736	1,782	1,670	1,726	1,698	1,646	1,615	1,615	1,674	1,821	1,813	1,890	1,765	1,830	1,934	2,240	2,303	2,308	2,070	1,987	2,115	1,911	1,819	1,733	1,664	1,530	1,645	1,729	
Grampian	275,977	3,310	3,350	3,381	3,343	3,199	3,125	2,924	2,886	2,874	2,771	2,894	3,138	3,104	3,160	3,251	3,226	3,259	3,383	3,469	3,500	3,802	3,706	3,912									

Table 2 (continued)

Females																																	
Area	All Ages	Age																															
		0	1	2	3	4	5	6	7	8	9	10	11	12	13	14	15	16	17	18	19	20	21	22	23	24	25	26	27	28	29	30	
Scotland	2,706,600	28,867	29,500	29,436	29,590	28,373	27,601	27,084	26,758	26,219	25,880	26,452	26,202	27,735	28,441	28,925	28,928	29,432	30,597	32,265	34,198	35,597	35,453	36,130	36,856	36,629	36,394	36,764	34,583	34,166	34,205	34,448	
Council areas																																	
Aberdeen City	111,167	1,269	1,288	1,210	1,191	1,176	1,066	1,088	960	953	982	964	893	965	924	954	950	1,037	1,184	1,501	1,840	2,251	2,231	2,151	2,244	2,209	2,205	2,053	1,899	1,952	1,863	1,635	
Aberdeenshire	124,682	1,372	1,490	1,516	1,438	1,414	1,433	1,415	1,345	1,337	1,349	1,326	1,360	1,442	1,442	1,456	1,480	1,493	1,389	1,221	1,278	1,237	1,257	1,257	1,244	1,234	1,280	1,212	1,163	1,182	1,305		
Angus	56,946	552	634	602	628	594	560	584	578	603	564	594	582	569	623	665	656	665	607	603	598	514	525	573	546	586	528	543	477	504	498	489	
Argyll & Bute	44,972	359	424	412	396	385	387	372	430	380	449	423	418	532	470	510	553	482	517	499	468	429	473	438	401	426	398	442	355	388	304	325	
Clackmannanshire	25,915	290	317	293	331	284	291	272	260	252	256	293	282	257	297	298	329	312	327	343	313	324	259	273	332	312	273	252	251	250	275	269	
Dumfries & Galloway	76,397	710	749	755	769	742	758	719	691	714	643	670	682	742	875	820	834	877	868	802	755	795	699	747	743	764	686	691	698	579	681	631	
Dundee City	76,117	821	839	825	861	758	711	727	704	671	670	651	661	661	709	750	721	697	834	1,333	1,481	1,609	1,434	1,398	1,464	1,397	1,344	1,301	1,065	937	1,042	1,123	
East Ayrshire	61,970	655	660	700	620	630	636	600	634	623	633	609	651	634	615	643	662	675	749	760	781	799	731	734	717	775	768	734	628	611	679	657	
East Dunbartonshire	54,154	495	446	500	522	524	549	529	518	553	558	574	545	633	639	656	659	646	651	604	668	589	577	578	546	523	565	571	501	512	435	464	
East Lothian	51,021	573	568	562	629	598	576	549	613	499	535	550	585	585	632	661	592	615	624	634	573	579	524	633	493	513	527	501	415	467	505	396	
East Renfrewshire	46,759	422	483	469	493	489	535	560	548	537	522	543	555	566	599	653	595	611	643	584	497	512	498	514	477	421	455	414	425	380	382	379	
Edinburgh, City of	258,638	2,818	2,663	2,733	2,649	2,358	2,160	2,047	2,044	1,996	1,975	1,971	2,013	2,123	2,160	1,938	2,187	2,189	2,589	3,164	3,726	4,192	4,635	4,796	4,984	5,141	5,035	5,521	5,392	5,409	5,492	5,357	
Eilean Siar	13,262	104	101	120	116	143	126	121	151	140	128	136	122	151	144	161	169	157	156	122	101	86	94	101	107	79	109	106	104	82	111	136	
Falkirk	79,495	855	988	975	1,004	892	887	850	817	829	750	844	778	870	873	864	829	916	889	921	904	991	916	875	968	845	851	985	832	953	971	978	
File	190,023	2,074	2,038	2,088	2,109	2,021	2,026	1,963	1,906	1,839	1,820	1,949	1,761	1,950	2,082	2,012	2,043	2,177	2,282	2,421	2,436	2,743	2,829	2,876	2,667	2,531	2,256	2,128	2,062	2,013	1,947	2,162	
Glasgow City	308,273	3,677	3,789	3,454	3,408	3,242	3,017	2,917	2,818	2,798	2,634	2,691	2,618	2,682	2,793	2,888	2,774	2,946	3,026	3,768	4,619	4,917	5,003	5,387	5,719	5,769	5,930	6,117	5,813	6,026	5,745	5,630	
Highland	113,232	1,176	1,169	1,168	1,213	1,175	1,152	1,132	1,158	1,125	1,111	1,162	1,086	1,177	1,272	1,244	1,325	1,290	1,215	1,132	1,053	996	990	1,043	1,082	1,100	1,112	1,138	1,066	1,066	1,121	1,255	
Inverclyde	41,380	369	399	382	390	418	404	421	414	396	367	394	388	443	413	471	474	474	496	427	473	475	503	462	520	489	511	528	461	470	439	421	
Midlothian	43,049	499	488	462	521	466	498	447	432	438	403	490	507	548	473	521	469	490	522	478	548	544	504	474	547	488	529	478	457	424	483	462	
Moray	43,454	468	478	442	506	473	409	460	418	414	350	438	418	453	508	540	553	541	557	501	480	419	429	478	440	474	417	447	433	393	373	310	
North Ayrshire	70,982	738	703	730	753	730	719	685	727	708	710	741	708	719	782	800	819	838	863	781	817	853	768	796	855	749	775	778	702	690	709	739	
North Lanarkshire	169,379	1,924	1,985	2,063	1,986	1,966	1,862	1,899	1,901	1,868	1,851	1,830	1,820	1,919	1,976	2,053	1,966	1,883	1,947	1,904	2,027	2,043	1,981	2,104	1,968	2,112	2,142	2,235	2,102	2,041	2,036	2,119	
Orkney Islands	10,194	104	103	96	102	97	114	105	88	101	116	84	104	101	89	114	111	149	148	114	97	90	109	69	100	95	101	100	93	82	85	98	
Perth & Kinross	75,975	711	743	750	722	743	707	721	703	726	694	830	754	800	834	894	883	886	844	833	734	758	751	859	920	964	1,071	1,016	946	787	811	769	
Renfrewshire	88,827	962	978	872	986	923	926	936	941	869	903	918	910	912	913	915	976	959	957	983	1,102	1,068	1,086	1,070	1,146	1,141	1,134	1,048	1,056	1,111	1,019	1,093	
Scottish Borders	58,225	510	599	608	642	628	549	607	597	594	624	576	637	587	638	624	672	682	626	657	576	643	584	521	560	530	505	478	476	479	454	501	
Shetland Islands	11,095	130	120	140	104	128	154	97	112	126	112	128	138	138	144	139	152	125	126	94	105	127	107	113	106	127	110	106	97	95	121		
South Ayrshire	58,024	538	534	542	536	549	543	572	545	506	522	529	492	597	612	613	609	601	671	600	647	589	674	603	622	667	631	607	614	442	528	587	
South Lanarkshire	162,777	1,741	1,728	1,848	1,793	1,712	1,788	1,705	1,667	1,656	1,665	1,643	1,732	1,803	1,772	1,864	1,767	1,843	1,972	1,875	1,926	1,873	1,782	1,793	1,881	1,806	1,910	1,917	1,917	1,798	1,799	1,931	
Stirling	47,445	392	429	460	449	473	473	465	495	486	435	517	514	548	560	599	543	573	634	801	976	940	872	815	836	659	506	536	468	421	467	436	
West Dunbartonshire	47,393	512	505	531	572	521	491	459	464	461	475	424	507	467	491	501	506	535	507	582	545	573	585	599	593	549	633	670	610	570	602	606	
West Lothian	88,378	1,047	1,062	1,128	1,151	1,121	1,094	1,060	1,079	1,021	1,074	960	981	1,103	1,103	1,109	1,107	1,054	1,074	1,023	1,011	1,020	1,053	1,046	1,008	1,165	1,131	1,039	947	1,069	1,072	1,064	
NHS Board areas																																	
Ayrshire & Arran	190,976	1,931	1,897	1,972	1,909	1,909	1,898	1,857	1,906	1,837	1,865	1,879	1,851	1,950	2,009	2,056	2,090	2,114	2,283	2,141	2,245	2,241	2,173	2,133	2,194	2,191	2,174	2,119	1,944	1,743	1,916	1,983	
Borders	58,225	510	599	608	642	628	549	607	597	594	624	576	637	587	638	624	672	682	626	657	576	643	584	521	560	530	505	478	476	479	454	501	
Dumfries & Galloway	76,397	710	749	755	769	742	758	719	691	714	643	670	682	742	875	820	834	877	868	802	755	795	699	747	743	764	686	691	698	579	681	631	
File	189,983	2,074	2,038	2,088	2,109	2,021	2,026	1,963	1,906	1,839	1,821	1,948	1,760	1,950	2,082	2,010	2,042	2,177	2,281	2,421	2,436	2,743	2,828	2,875	2,667	2,532	2,256	2,125	2,061	2,015	1,947	2,162	
Forth Valley	152,663	1,538	1,733	1,727	1,781	1,649	1,649	1,586	1,569	1,563	1,442	1,653	1,573	1,676	1,726	1,756	1,701	1,799	1,848	2,064	2,193	2,253	2,047	1,965	2,132	1,815	1,628	1,779	1,544	1,626	1,709	1,680	
Grampian	279,303	3,109	3,256	3,168	3,135	3,063	2,908	2,963	2,723	2,704	2,681	2,728	2,671	2,918	2,858	2,936	2,959	3,058	3,234	3,391	3,652	3,948	3,887	3,846	3,941	3,927	3,856	3,780	3,544	3,508	3,418	3,250	
Greater Glasgow & Clyde	62																																

Table 2 (continued)

Persons																														
Area	31	32	33	34	35	36	37	38	39	40	41	42	43	44	45	46	47	48	49	50	51	52	53	54	55	56	57	58	59	60
Scotland	69,189	64,933	59,733	57,748	61,057	61,451	62,336	66,306	70,561	74,600	74,276	76,996	78,610	80,161	79,297	81,607	81,541	80,672	79,435	78,066	76,163	75,116	73,356	71,330	69,122	66,591	65,784	64,448	62,102	63,112
Council areas																														
Aberdeen City	3,987	3,491	3,202	2,982	2,880	2,826	2,798	2,889	2,970	2,973	2,938	3,010	2,917	3,073	2,961	3,062	3,074	3,034	2,965	2,816	3,094	2,966	2,890	2,751	2,758	2,668	2,565	2,386	2,392	2,358
Aberdeenshire	2,537	2,519	2,583	2,603	2,685	2,777	3,132	3,363	3,420	3,934	3,825	4,073	3,915	4,119	4,036	4,125	4,128	4,095	3,981	3,896	3,783	3,759	3,827	3,676	3,563	3,590	3,645	3,374	3,224	3,320
Angus	1,013	984	1,032	975	1,121	1,083	1,173	1,383	1,480	1,512	1,446	1,574	1,529	1,670	1,651	1,755	1,790	1,734	1,813	1,652	1,776	1,638	1,555	1,566	1,557	1,442	1,522	1,613	1,462	1,533
Argyll & Bute	812	661	632	723	854	906	862	1,050	1,127	1,127	1,240	1,241	1,395	1,349	1,331	1,465	1,401	1,403	1,368	1,421	1,393	1,329	1,353	1,306	1,343	1,212	1,298	1,218	1,214	1,402
Clackmannanshire	563	497	565	524	564	569	592	674	712	686	765	844	777	910	804	845	845	836	779	792	747	753	664	698	671	703	679	644	621	653
Dumfries & Galloway	1,279	1,283	1,184	1,127	1,388	1,301	1,486	1,543	1,798	1,933	1,907	2,071	2,057	2,170	2,291	2,370	2,380	2,417	2,365	2,305	2,228	2,176	2,187	2,126	2,140	2,076	2,105	2,095	2,053	2,144
Dundee City	2,285	2,119	1,565	1,424	1,414	1,451	1,443	1,530	1,543	1,803	1,705	1,797	1,722	1,799	1,919	1,997	1,943	2,033	1,962	2,004	1,957	1,856	1,921	1,843	1,654	1,660	1,564	1,571	1,548	1,498
East Ayrshire	1,280	1,261	1,210	1,099	1,352	1,396	1,319	1,479	1,708	1,724	1,763	1,913	1,928	1,991	1,873	2,025	1,907	1,906	1,826	1,816	1,730	1,784	1,693	1,712	1,553	1,531	1,509	1,583	1,452	1,537
East Dunbartonshire	925	965	775	917	829	844	969	1,097	1,278	1,318	1,420	1,458	1,476	1,621	1,581	1,739	1,734	1,829	1,828	1,762	1,670	1,776	1,638	1,715	1,542	1,483	1,432	1,469	1,301	1,380
East Lothian	826	800	864	915	1,000	1,118	1,268	1,329	1,568	1,533	1,558	1,620	1,687	1,480	1,696	1,618	1,598	1,549	1,550	1,467	1,471	1,429	1,457	1,348	1,283	1,291	1,232	1,144	1,229	
East Renfrewshire	791	776	785	720	811	733	920	976	1,057	1,202	1,209	1,303	1,352	1,453	1,449	1,456	1,527	1,587	1,545	1,508	1,495	1,488	1,405	1,364	1,321	1,265	1,137	1,112	1,138	1,026
Edinburgh, City of	10,365	9,196	8,140	7,679	7,393	7,450	6,845	6,837	6,820	7,102	6,711	6,633	6,896	6,965	6,686	6,730	6,586	6,767	6,475	6,533	6,229	6,078	5,893	5,931	5,457	5,183	5,094	4,915	4,839	4,946
Eilean Siar	257	275	207	266	326	287	265	326	363	328	357	424	431	413	394	398	417	394	430	387	402	380	396	405	374	381	355	388	382	370
Falkirk	1,952	1,906	1,839	1,768	1,884	1,998	2,064	2,115	2,271	2,377	2,319	2,418	2,566	2,554	2,418	2,537	2,424	2,413	2,420	2,288	2,270	2,129	2,133	2,011	1,967	1,840	1,843	1,840	1,807	1,937
Fife	4,313	3,964	3,696	3,653	4,029	3,953	4,124	4,462	4,872	5,156	5,135	5,504	5,568	5,670	5,518	5,647	5,607	5,487	5,509	5,374	5,281	5,202	5,089	4,890	4,821	4,640	4,657	4,495	4,409	4,544
Glasgow City	11,594	10,595	9,453	8,699	8,946	8,500	8,138	8,270	8,490	8,573	8,225	8,460	8,379	8,196	8,432	8,456	8,774	8,455	8,502	8,239	7,982	7,883	7,379	7,234	7,167	6,812	6,317	6,059	5,670	5,454
Highland	2,430	2,475	2,184	2,153	2,444	2,454	2,464	2,685	2,873	3,010	3,090	3,056	3,341	3,426	3,509	3,637	3,682	3,567	3,401	3,581	3,485	3,393	3,404	3,260	3,265	3,270	3,258	3,259	3,210	3,157
Inverclyde	938	800	785	742	740	848	810	956	973	1,013	1,056	1,092	1,225	1,262	1,249	1,229	1,319	1,387	1,371	1,244	1,261	1,212	1,143	1,186	1,110	1,049	998	988	981	1,091
Midlothian	854	850	782	837	870	907	960	962	1,065	1,201	1,280	1,210	1,306	1,254	1,274	1,294	1,251	1,365	1,229	1,213	1,263	1,237	1,190	1,169	1,087	1,073	1,051	1,048	1,029	1,048
Moray	787	889	796	800	931	891	976	1,045	1,204	1,336	1,268	1,410	1,354	1,419	1,398	1,406	1,366	1,451	1,369	1,343	1,259	1,264	1,290	1,209	1,243	1,121	1,173	1,180	1,059	1,191
North Ayrshire	1,324	1,329	1,252	1,246	1,430	1,327	1,561	1,516	1,666	1,869	1,917	1,908	1,978	2,044	2,069	2,141	2,171	2,081	2,084	1,962	1,953	2,001	1,969	1,897	1,884	1,771	1,792	1,790	1,751	1,774
North Lanarkshire	4,270	3,929	3,666	3,492	4,120	3,995	4,111	4,357	4,750	4,830	5,066	5,187	5,199	5,304	5,250	5,321	5,091	4,982	5,122	4,852	4,668	4,573	4,567	4,526	4,273	4,072	4,128	4,037	3,703	3,677
Orkney Islands	205	235	213	164	216	230	191	245	235	274	313	254	323	359	338	323	319	329	324	318	315	301	290	319	316	282	289	307	271	280
Perth & Kinross	1,504	1,504	1,425	1,401	1,357	1,470	1,653	1,674	1,852	1,904	1,898	2,050	2,218	2,182	2,289	2,330	2,382	2,331	2,164	2,201	2,013	2,191	2,093	2,037	1,931	1,969	1,956	2,035	1,875	1,916
Renfrewshire	2,113	1,934	1,865	1,770	1,679	1,839	1,934	2,042	2,216	2,434	2,551	2,595	2,722	2,733	2,837	2,856	2,846	2,691	2,886	2,851	2,577	2,570	2,515	2,316	2,265	2,082	2,208	2,103	1,988	2,195
Scottish Borders	969	919	914	994	1,055	1,196	1,162	1,351	1,533	1,633	1,638	1,713	1,835	1,870	1,853	1,844	1,878	1,924	1,751	1,779	1,813	1,808	1,712	1,668	1,586	1,543	1,590	1,597	1,528	1,595
Shetland Islands	246	288	228	326	259	286	258	312	325	323	320	308	327	322	372	328	400	349	363	356	328	315	320	289	315	336	304	304	291	308
South Ayrshire	1,011	1,070	993	935	961	1,142	1,127	1,239	1,408	1,487	1,488	1,458	1,602	1,625	1,620	1,770	1,765	1,650	1,782	1,766	1,655	1,697	1,731	1,644	1,588	1,557	1,540	1,556	1,569	1,564
South Lanarkshire	3,835	3,492	3,346	3,150	3,492	3,667	3,662	4,031	4,274	4,577	4,600	4,860	4,888	4,916	4,772	4,914	5,223	5,000	4,908	4,862	4,856	4,768	4,650	4,557	4,382	4,250	4,197	4,002	3,928	3,723
Stirling	803	839	722	811	814	895	871	1,069	1,204	1,301	1,310	1,312	1,375	1,327	1,432	1,425	1,418	1,358	1,327	1,351	1,320	1,246	1,214	1,141	1,098	1,079	1,102	1,120	1,085	1,122
West Dunbartonshire	1,019	1,019	905	921	994	957	1,000	1,084	1,107	1,208	1,254	1,360	1,395	1,388	1,392	1,453	1,492	1,471	1,331	1,415	1,357	1,332	1,374	1,239	1,318	1,284	1,172	1,096	1,170	1,125
West Lothian	2,102	2,069	1,925	1,932	2,219	2,122	2,348	2,476	2,638	2,884	2,729	2,942	2,994	3,090	2,819	3,033	2,783	2,748	2,706	2,629	2,536	2,540	2,442	2,188	2,225	2,085	2,013	2,032	2,008	2,015
NHS Board areas																														
Ayrshire & Arran	3,615	3,660	3,455	3,280	3,743	3,865	4,007	4,234	4,782	5,080	5,168	5,279	5,508	5,660	5,562	5,936	5,843	5,637	5,692	5,544	5,338	5,482	5,393	5,253	5,025	4,859	4,841	4,929	4,772	4,875
Borders	969	919	914	994	1,055	1,196	1,162	1,351	1,533	1,633	1,638	1,713	1,835	1,870	1,853	1,844	1,878	1,924	1,751	1,779	1,813	1,808	1,712	1,668	1,586	1,543	1,590	1,597	1,528	1,595
Dumfries & Galloway	1,279	1,283	1,184	1,127	1,388	1,301	1,486	1,543	1,798	1,933	1,907	2,071	2,057	2,170	2,291	2,370	2,380	2,417	2,365	2,305	2,228	2,176	2,187	2,126	2,140	2,076	2,105	2,095	2,053	2,144
Fife	4,311	3,965	3,696	3,653	4,029	3,952	4,124	4,462	4,874	5,152	5,135	5,502	5,566	5,667	5,516	5,645	5,608	5,484	5,506	5,373	5,281	5,201	5,087	4,889	4,821	4,640	4,654	4,494	4,408	4,544
Forth Valley	3,315	3,237	3,119	3,093	3,257	3,454	3,525	3,856	4,180	4,360	4,387	4,565	4,713	4,786	4,649	4,802	4,681	4,607	4,518	4,428	4,334	4,120	4,010	3,842	3,731	3,6				

Table 2 (continued)

Males																															
Area	31	32	33	34	35	36	37	38	39	40	41	42	43	44	45	46	47	48	49	50	51	52	53	54	55	56	57	58	59	60	
Scotland	35,218	33,101	29,698	28,862	29,959	29,745	30,219	31,994	33,519	35,717	35,523	36,897	37,366	38,699	37,840	39,052	38,830	38,339	38,517	37,587	36,875	36,188	35,319	34,535	33,741	32,387	32,080	31,467	30,326	30,677	
Council areas																															
Aberdeen City	2,301	1,994	1,807	1,751	1,533	1,469	1,468	1,524	1,516	1,507	1,434	1,531	1,471	1,641	1,436	1,466	1,522	1,539	1,442	1,376	1,541	1,453	1,425	1,399	1,388	1,351	1,339	1,241	1,186	1,199	
Aberdeenshire	1,248	1,238	1,280	1,232	1,268	1,347	1,464	1,609	1,560	1,845	1,872	1,990	1,918	2,050	1,986	2,001	2,025	2,030	2,043	1,945	1,862	1,896	1,986	1,820	1,796	1,789	1,813	1,659	1,610	1,680	
Angus	491	527	471	451	553	518	543	646	718	695	688	735	707	786	781	835	899	847	906	757	861	798	756	737	762	698	734	810	710	755	
Argyll & Bute	474	357	340	344	417	458	429	534	553	555	585	615	704	677	651	684	684	681	686	733	691	633	660	668	697	590	647	600	586	667	
Clackmannanshire	284	243	259	244	276	300	273	305	339	331	371	430	377	426	375	418	430	418	371	389	375	382	285	353	310	348	324	319	301	289	
Dumfries & Galloway	592	590	552	560	669	579	712	687	873	918	924	957	947	1,053	1,114	1,172	1,132	1,162	1,128	1,110	1,035	1,029	1,068	1,003	1,041	996	1,056	994	1,000	1,072	
Dundee City	1,238	1,077	813	731	661	665	675	716	712	840	780	810	766	810	869	914	915	899	880	886	919	884	901	893	807	822	795	724	749	735	
East Ayrshire	601	578	594	508	658	710	644	733	814	824	842	927	883	948	907	960	914	904	878	892	772	880	801	823	761	745	734	777	683	786	
East Dunbartonshire	493	497	355	476	341	359	444	456	566	603	672	667	699	722	702	853	774	848	863	832	774	852	774	795	758	721	673	710	603	676	
East Lothian	396	400	394	384	440	548	516	628	604	741	721	741	759	777	722	867	730	762	775	748	695	721	691	716	677	606	656	591	537	554	
East Renfrewshire	435	346	389	328	354	309	419	410	500	526	541	609	571	665	685	652	688	753	730	743	716	759	688	678	661	602	530	538	564	480	
Edinburgh, City of	5,280	4,709	4,067	3,992	3,780	3,797	3,443	3,498	3,319	3,572	3,379	3,282	3,376	3,428	3,239	3,291	3,104	3,207	3,090	3,220	2,996	2,922	2,821	2,829	2,779	2,604	2,546	2,418	2,417	2,348	
Eilean Siar	129	124	98	125	154	147	126	160	189	169	174	212	216	213	183	196	200	199	212	191	209	212	195	209	177	190	179	215	188	185	
Falkirk	1,006	879	884	893	903	939	1,046	1,009	1,079	1,149	1,119	1,155	1,216	1,257	1,156	1,262	1,177	1,142	1,165	1,096	1,146	1,031	1,082	963	944	875	897	885	861	891	
Fife	2,130	1,888	1,753	1,738	1,929	1,869	1,988	2,167	2,344	2,419	2,505	2,632	2,642	2,810	2,640	2,673	2,692	2,584	2,670	2,645	2,632	2,516	2,428	2,420	2,341	2,246	2,286	2,190	2,105	2,200	
Glasgow City	6,024	5,707	5,032	4,677	4,664	4,341	4,140	4,220	4,226	4,251	4,019	4,053	3,919	3,956	3,982	3,916	3,989	4,015	4,047	3,835	3,827	3,725	3,435	3,507	3,359	3,398	3,054	3,011	2,751	2,668	
Highland	1,199	1,266	1,091	1,075	1,209	1,203	1,153	1,301	1,368	1,428	1,413	1,398	1,629	1,673	1,737	1,709	1,753	1,750	1,710	1,722	1,729	1,624	1,636	1,624	1,612	1,601	1,644	1,583	1,611	1,561	
Inverclyde	452	411	393	386	345	382	373	455	468	478	474	472	544	601	547	582	603	658	670	614	583	542	567	580	546	503	464	482	474	525	
Midlothian	408	416	359	401	368	418	448	447	480	546	637	550	597	611	568	595	579	592	567	567	608	588	553	512	545	499	506	494	499	482	
Moray	459	469	415	393	479	426	531	535	597	665	655	739	702	696	707	695	705	731	696	674	654	648	643	578	622	536	558	583	525	584	
North Ayrshire	622	641	600	577	660	546	774	685	742	826	896	870	898	905	923	1,014	1,024	907	1,009	933	915	945	908	893	913	855	828	818	852	860	
North Lanarkshire	2,113	1,982	1,759	1,642	1,958	1,947	1,957	2,064	2,153	2,296	2,404	2,469	2,428	2,553	2,526	2,531	2,459	2,275	2,513	2,321	2,152	2,164	2,133	2,192	2,035	1,922	1,958	1,942	1,799	1,767	
Orkney Islands	103	106	102	77	117	101	88	121	108	114	162	132	163	183	170	154	154	177	172	160	150	150	153	148	139	158	148	141	144	144	
Perth & Kinross	788	824	759	691	717	726	773	797	865	841	885	955	1,016	1,037	1,128	1,096	1,207	1,118	1,059	1,064	988	1,081	1,028	984	910	971	934	982	902	928	
Renfrewshire	1,011	946	896	868	865	877	906	945	975	1,137	1,151	1,241	1,280	1,261	1,336	1,394	1,389	1,273	1,391	1,293	1,236	1,231	1,196	1,124	1,084	958	1,039	1,016	960	1,024	
Scottish Borders	509	454	438	498	470	566	526	618	746	754	804	840	926	905	912	916	885	918	888	876	866	857	816	797	765	782	777	785	765	786	
Shetland Islands	126	141	113	152	142	146	115	154	157	163	164	158	155	174	192	181	194	185	184	178	167	164	156	139	164	156	163	149	155	152	
South Ayrshire	518	575	444	432	453	528	550	597	669	715	671	699	760	809	759	862	836	733	880	832	823	808	804	778	771	757	755	759	772	747	
South Lanarkshire	1,928	1,723	1,560	1,512	1,656	1,717	1,702	1,887	1,984	2,192	2,210	2,364	2,344	2,313	2,261	2,305	2,419	2,364	2,321	2,371	2,356	2,220	2,319	2,133	2,095	1,981	2,022	1,968	1,898	1,843	
Stirling	306	420	314	311	350	394	420	444	537	595	560	579	640	619	654	693	679	627	643	643	672	641	592	577	537	523	511	549	557	567	
West Dunbartonshire	487	512	425	418	463	441	481	501	511	576	567	637	659	642	625	702	690	684	614	650	662	615	666	576	637	595	531	547	582	534	
West Lothian	1,067	1,061	942	995	1,107	972	1,092	1,141	1,247	1,446	1,244	1,448	1,454	1,498	1,367	1,463	1,379	1,357	1,314	1,291	1,263	1,217	1,156	1,082	1,099	1,028	969	970	983	988	
NHS Board areas																															
Ayrshire & Arran	1,741	1,794	1,638	1,517	1,771	1,784	1,968	2,015	2,225	2,365	2,409	2,496	2,541	2,662	2,589	2,836	2,774	2,544	2,767	2,657	2,510	2,633	2,513	2,494	2,445	2,357	2,317	2,354	2,307	2,393	
Borders	509	454	438	498	470	566	526	618	746	754	804	840	926	905	912	916	885	918	888	876	866	857	816	797	765	782	777	785	765	786	
Dumfries & Galloway	592	590	552	560	669	579	712	687	873	918	924	957	947	1,053	1,114	1,172	1,132	1,128	1,110	1,035	1,029	1,068	1,003	1,041	996	1,056	994	1,000	1,072		
Fife	2,129	1,889	1,753	1,738	1,929	1,869	1,988	2,167	2,344	2,416	2,505	2,632	2,642	2,809	2,640	2,673	2,692	2,581	2,669	2,644	2,632	2,515	2,427	2,420	2,341	2,246	2,285	2,189	2,104	2,200	
Forth Valley	1,593	1,540	1,451	1,444	1,526	1,629	1,736	1,754	1,950	2,071	2,048	2,161	2,228	2,300	2,183	2,373	2,280	2,188	2,171	2,126	2,191	2,053	1,958	1,892	1,789	1,745	1,732	1,745	1,716	1,744	
Grampian	4,008	3,701	3,502	3,376	3,280	3,242	3,463	3,668	3,673	4,017	3,961	4,260	4,091	4,387	4,129	4,162	4,252	4,300	4,181	3,995	4,057	3,997	4,054	3,797	3,806	3,676	3,710	3,483	3,321	3,463	
Greater Glasgow & Clyde	9,438	8,897	7,948	7,578	7,468	7,208	7,206	7,490	7,758	8,124	7,967	8,318	8,293	8,380	8,402	8,615	8,683	8,755	8,877	8,496	8,321	8,305	7,881	7,763	7,525	7,265	6,789	6,808	6,408	6,342	
Highland	1,673	1,623	1,431	1,419	1,626	1,661	1,582	1,835	1,921	1,983	1,998	2,013	2,333	2,350	2,388	2,393	2,437	2,431	2,396	2,455	2,420	2,257	2,296	2,292	2,309	2,191					

Table 2 (continued)

Females																														
Area	31	32	33	34	35	36	37	38	39	40	41	42	43	44	45	46	47	48	49	50	51	52	53	54	55	56	57	58	59	60
Scotland	33,971	31,832	30,035	28,886	31,098	31,706	32,117	34,312	37,042	38,883	38,753	40,099	41,244	41,462	41,457	42,555	42,711	42,333	40,918	40,479	39,288	38,928	38,037	36,795	35,381	34,204	33,704	32,981	31,776	32,435
Council areas																														
Aberdeen City	1,686	1,497	1,395	1,231	1,347	1,357	1,330	1,365	1,454	1,466	1,504	1,479	1,446	1,432	1,525	1,596	1,552	1,495	1,523	1,440	1,553	1,513	1,465	1,352	1,370	1,317	1,226	1,145	1,206	1,159
Aberdeenshire	1,289	1,281	1,303	1,371	1,417	1,430	1,668	1,754	1,860	2,089	1,953	2,083	1,997	2,069	2,050	2,124	2,103	2,065	1,938	1,951	1,921	1,863	1,841	1,856	1,767	1,801	1,832	1,715	1,614	1,640
Angus	522	457	561	524	568	565	630	737	762	817	758	839	822	864	870	920	891	887	907	895	915	840	799	829	795	744	788	803	752	778
Argyll & Bute	338	304	292	379	437	448	433	516	574	572	655	626	691	672	680	781	717	722	682	688	702	696	693	638	646	622	651	618	628	735
Clackmannanshire	279	254	306	280	288	269	319	369	373	355	394	414	400	484	429	427	415	418	408	403	372	371	379	345	361	355	325	320	364	
Dumfries & Galloway	687	693	632	567	719	722	774	856	925	1,015	983	1,114	1,110	1,117	1,177	1,198	1,248	1,255	1,237	1,195	1,193	1,147	1,119	1,123	1,099	1,080	1,049	1,101	1,053	1,072
Dundee City	1,047	1,042	752	693	753	786	768	814	831	963	925	987	956	989	1,050	1,083	1,028	1,134	1,082	1,118	1,038	972	1,020	950	847	838	769	847	799	763
East Ayrshire	679	683	616	591	694	686	675	746	894	900	921	986	1,045	1,043	966	1,065	993	1,002	948	924	958	904	892	889	792	786	775	806	769	751
East Dunbartonshire	432	468	420	441	488	485	525	641	712	715	748	791	777	899	879	886	960	981	965	930	896	924	864	920	784	762	759	759	698	704
East Lothian	430	400	470	531	560	603	602	640	725	827	812	817	861	910	758	829	888	836	774	802	772	750	738	741	671	676	635	641	607	675
East Renfrewshire	356	430	396	392	457	424	501	566	557	676	668	694	781	788	764	804	839	834	815	765	779	729	717	686	660	663	607	574	574	546
Edinburgh, City of	5,085	4,487	4,073	3,687	3,613	3,653	3,402	3,339	3,501	3,530	3,332	3,351	3,520	3,537	3,447	3,439	3,482	3,560	3,385	3,313	3,233	3,156	3,072	3,102	2,678	2,579	2,548	2,497	2,422	2,598
Eilean Siar	128	151	109	141	172	140	139	166	174	159	183	212	215	200	211	202	217	195	218	196	193	168	201	196	197	191	176	173	194	185
Falkirk	946	1,027	955	875	981	1,059	1,018	1,106	1,192	1,228	1,200	1,263	1,350	1,297	1,262	1,275	1,247	1,271	1,255	1,192	1,124	1,098	1,051	1,048	1,023	965	946	955	946	1,046
Fife	2,183	2,076	1,943	1,915	2,100	2,084	2,136	2,295	2,528	2,737	2,630	2,872	2,926	2,860	2,878	2,974	2,915	2,903	2,839	2,729	2,649	2,686	2,661	2,470	2,480	2,394	2,371	2,305	2,304	2,344
Glasgow City	5,570	4,888	4,421	4,022	4,282	4,159	3,998	4,050	4,264	4,322	4,206	4,407	4,460	4,240	4,450	4,540	4,785	4,440	4,455	4,404	4,155	4,158	3,944	3,727	3,808	3,414	3,263	3,048	2,919	2,786
Highland	1,231	1,209	1,093	1,078	1,235	1,251	1,311	1,384	1,505	1,582	1,677	1,658	1,712	1,753	1,772	1,928	1,929	1,817	1,691	1,859	1,756	1,769	1,768	1,636	1,653	1,669	1,614	1,676	1,599	1,596
Inverclyde	486	389	392	356	395	466	437	501	505	535	582	620	681	661	702	647	716	729	701	630	678	670	576	606	564	546	534	506	507	566
Midlothian	446	434	423	436	502	489	512	515	585	655	643	660	709	643	706	699	672	773	662	646	655	649	637	657	542	574	545	554	530	566
Moray	328	420	381	407	452	465	445	510	607	671	613	671	652	723	691	711	661	720	673	669	605	616	647	631	621	585	615	597	534	607
North Ayrshire	702	688	652	669	770	781	787	831	924	1,043	1,021	1,038	1,080	1,139	1,146	1,127	1,147	1,174	1,075	1,029	1,038	1,056	1,061	1,004	971	916	964	972	899	914
North Lanarkshire	2,157	1,947	1,907	1,850	2,162	2,048	2,154	2,293	2,597	2,534	2,662	2,718	2,771	2,751	2,724	2,790	2,632	2,707	2,609	2,531	2,516	2,409	2,434	2,334	2,238	2,150	2,170	2,085	1,904	1,910
Orkney Islands	102	129	111	87	99	129	103	124	127	160	151	122	160	176	168	169	165	152	152	168	165	151	140	166	168	143	131	159	130	136
Perth & Kinross	716	680	666	710	640	744	880	877	987	1,063	1,013	1,095	1,202	1,145	1,161	1,234	1,175	1,213	1,105	1,137	1,025	1,110	1,065	1,053	1,021	998	1,022	1,053	973	988
Renfrewshire	1,102	988	969	902	814	962	1,028	1,097	1,241	1,297	1,400	1,354	1,442	1,472	1,501	1,462	1,457	1,418	1,495	1,558	1,341	1,339	1,319	1,192	1,181	1,124	1,169	1,087	1,028	1,171
Scottish Borders	460	465	476	496	585	630	636	733	787	879	834	873	909	965	941	928	993	1,006	863	903	947	951	896	871	821	761	813	812	763	809
Shetland Islands	120	147	115	174	117	140	143	158	168	160	156	150	172	148	180	147	206	164	179	178	161	151	164	150	151	180	141	155	136	156
South Ayrshire	493	495	549	503	508	614	577	642	739	772	817	759	842	816	861	908	929	917	902	934	832	889	927	866	817	800	785	797	797	817
South Lanarkshire	1,907	1,769	1,786	1,638	1,836	1,950	1,960	2,144	2,290	2,385	2,390	2,496	2,544	2,603	2,511	2,609	2,804	2,636	2,587	2,491	2,500	2,548	2,331	2,424	2,287	2,269	2,175	2,034	2,030	1,880
Stirling	497	419	408	500	464	501	451	625	667	706	750	733	735	708	778	732	739	731	684	708	648	605	622	564	561	556	591	571	528	555
West Dunbartonshire	532	507	480	503	531	516	519	583	596	632	687	723	736	746	767	751	802	787	717	765	695	717	708	663	681	689	641	549	588	591
West Lothian	1,035	1,008	983	937	1,112	1,150	1,256	1,335	1,391	1,438	1,485	1,494	1,540	1,592	1,452	1,570	1,404	1,391	1,392	1,338	1,273	1,323	1,286	1,106	1,126	1,057	1,044	1,062	1,025	1,027
NHS Board areas																														
Ayrshire & Arran	1,874	1,866	1,817	1,763	1,972	2,081	2,039	2,219	2,557	2,715	2,759	2,783	2,967	2,998	2,973	3,100	3,069	3,093	2,925	2,887	2,828	2,849	2,880	2,759	2,580	2,502	2,524	2,575	2,465	2,482
Borders	460	465	476	496	585	630	636	733	787	879	834	873	909	965	941	928	993	1,006	863	903	947	951	896	871	821	761	813	812	763	809
Dumfries & Galloway	687	693	632	567	719	722	774	856	925	1,015	983	1,114	1,110	1,117	1,177	1,198	1,248	1,255	1,237	1,195	1,193	1,147	1,119	1,123	1,099	1,080	1,049	1,101	1,053	1,072
Fife	2,182	2,076	1,943	1,915	2,100	2,083	2,136	2,295	2,528	2,736	2,630	2,870	2,924	2,858	2,876	2,972	2,916	2,903	2,837	2,729	2,649	2,686	2,660	2,469	2,480	2,394	2,369	2,305	2,304	2,344
Forth Valley	1,722	1,697	1,668	1,649	1,731	1,825	1,789	2,102	2,230	2,289	2,339	2,404	2,485	2,486	2,466	2,429	2,401	2,419	2,347	2,302	2,143	2,067	2,052	1,950	1,942	1,873	1,888	1,847	1,790	1,961
Grampian	3,303	3,198	3,079	3,009	3,216	3,252	3,443	3,629	3,921	4,226	4,070	4,233	4,095	4,224	4,266	4,431	4,316	4,280	4,134	4,060	4,079	3,992	3,953	3,839	3,758	3,703	3,673	3,457	3,354	3,406
Greater Glasgow & Clyde	9,043	8,200	7,616	7,135	7,475	7,558	7,556	8,010	8,492	8,805	8,897	9,194	9,465	9,425	9,681	9,743	10,222	9,820	9,751	9,686	9,109	9,135	8,719	8,395	8,272	7,744	7,510	7,033	6,800	6,798
Highland	1,569	1,513	1,385	1,457	1,672	1,699	1,744	1,900	2,079	2,154	2,332	2,284	2,403	2,425																

Table 2 (continued)

Persons	Age																														
	61	62	63	64	65	66	67	68	69	70	71	72	73	74	75	76	77	78	79	80	81	82	83	84	85	86	87	88	89	90+	
Scotland	63,608	65,419	67,137	72,711	55,438	52,935	53,614	51,892	47,654	44,407	45,448	44,119	42,962	40,844	39,747	37,747	35,075	33,079	32,351	30,141	27,550	25,192	21,871	20,091	18,832	16,345	14,579	11,950	10,726	37,798	
Council areas																															
Aberdeen City	2,346	2,473	2,475	2,638	1,960	1,633	1,679	1,745	1,667	1,527	1,623	1,516	1,546	1,479	1,423	1,371	1,347	1,269	1,351	1,195	1,105	1,025	841	820	733	670	567	445	422	1,395	
Aberdeenshire	3,298	3,498	3,495	3,701	2,885	2,588	2,608	2,444	2,301	1,988	2,163	2,012	1,953	1,774	1,806	1,652	1,562	1,446	1,332	1,295	1,176	1,107	986	874	797	818	741	521	514	1,752	
Angus	1,576	1,657	1,761	1,964	1,397	1,344	1,379	1,329	1,216	1,094	1,166	1,069	1,041	1,056	1,001	969	896	789	837	832	712	626	589	517	497	434	407	349	290	903	
Argyll & Bute	1,316	1,413	1,428	1,700	1,238	1,196	1,214	1,136	1,101	1,013	1,087	990	912	931	871	822	730	702	718	627	576	549	474	426	412	337	313	224	217	873	
Clackmannanshire	687	700	726	760	562	592	565	547	482	438	406	415	429	452	368	337	279	284	281	234	249	195	195	160	158	125	124	94	86	257	
Dumfries & Galloway	2,295	2,360	2,378	2,646	2,070	2,009	2,012	1,979	1,900	1,717	1,737	1,653	1,563	1,579	1,501	1,338	1,305	1,305	1,181	1,087	1,058	965	783	793	654	620	498	461	399	1,283	
Dundee City	1,579	1,646	1,662	1,907	1,379	1,399	1,298	1,316	1,229	1,219	1,276	1,243	1,275	1,126	1,156	1,063	1,047	993	975	945	849	803	684	599	586	578	517	420	392	1,225	
East Ayrshire	1,637	1,612	1,725	1,883	1,355	1,368	1,342	1,274	1,171	1,138	1,106	1,077	1,039	1,039	943	927	861	818	754	696	621	527	494	427	433	354	304	283	245	824	
East Dunbartonshire	1,409	1,418	1,435	1,570	1,197	1,218	1,177	1,127	1,046	1,005	1,007	1,019	978	981	892	887	858	767	752	665	650	590	529	491	390	387	312	253	239	807	
East Lothian	1,205	1,161	1,355	1,372	1,089	1,068	1,125	1,004	958	926	869	837	939	757	749	743	735	649	652	587	561	535	436	423	412	327	327	275	254	217	755
East Renfrewshire	1,063	1,139	1,169	1,241	936	925	936	904	777	801	781	766	803	730	746	711	667	613	651	593	529	460	439	407	400	282	289	238	223	670	
Edinburgh, City of	4,943	5,026	4,971	5,568	3,991	3,719	3,732	3,607	3,292	3,111	3,217	3,195	3,264	3,039	3,114	2,925	2,783	2,734	2,665	2,567	2,336	2,124	2,002	1,802	1,718	1,452	1,346	1,161	1,114	3,914	
Eilean Siar	415	406	388	438	340	301	343	333	282	309	297	279	275	267	237	241	237	227	203	155	166	182	145	132	133	113	104	86	82	262	
Falkirk	1,939	1,969	1,979	2,180	1,579	1,595	1,561	1,575	1,373	1,355	1,291	1,400	1,298	1,192	1,129	1,080	1,007	930	882	821	761	688	558	552	482	453	393	299	281	977	
Fife	4,577	4,905	5,059	5,610	4,253	4,121	4,179	3,915	3,634	3,186	3,303	3,206	2,979	3,023	2,893	2,678	2,501	2,314	2,201	2,052	1,978	1,702	1,577	1,542	1,352	1,179	1,112	888	754	3,076	
Glasgow City	5,359	5,425	5,568	5,732	4,560	4,289	4,274	4,310	3,957	3,849	3,963	3,951	3,886	3,707	3,702	3,789	3,277	3,182	3,214	2,989	2,659	2,469	2,153	1,871	1,854	1,524	1,277	1,100	981	3,594	
Highland	3,192	3,290	3,433	3,431	2,749	2,646	2,723	2,670	2,407	2,142	2,233	2,006	2,045	1,830	1,798	1,676	1,625	1,534	1,486	1,402	1,246	1,212	999	941	870	774	729	569	503	1,742	
Inverclyde	1,016	1,009	1,047	1,105	927	844	904	881	716	730	720	714	713	670	667	593	557	553	586	523	458	457	316	308	315	228	217	215	161	613	
Midlothian	1,077	1,135	1,118	1,236	969	941	903	820	741	732	714	705	700	604	653	589	535	464	486	478	407	368	304	306	255	241	227	175	120	548	
Moray	1,222	1,157	1,225	1,389	1,029	1,037	1,034	959	944	848	890	813	806	776	701	793	743	641	584	570	476	468	411	366	342	324	257	225	197	626	
North Ayrshire	1,837	1,904	2,046	2,221	1,640	1,552	1,641	1,568	1,466	1,363	1,452	1,291	1,300	1,145	1,145	1,084	1,002	958	928	827	740	689	589	479	513	403	363	344	265	1,012	
North Lanarkshire	3,846	3,823	3,955	4,055	3,223	3,072	3,258	3,181	2,730	2,649	2,726	2,703	2,595	2,363	2,304	2,168	1,952	1,864	1,723	1,615	1,510	1,330	1,083	1,012	943	758	701	531	483	1,762	
Orkney Islands	273	311	300	339	247	242	267	265	264	197	271	212	207	172	159	169	151	124	125	118	135	108	97	72	77	65	60	37	51	161	
Perth & Kinross	2,088	2,029	2,158	2,357	1,852	1,751	1,742	1,698	1,642	1,420	1,475	1,501	1,314	1,348	1,276	1,272	1,131	1,061	1,064	1,036	925	841	768	758	674	566	547	456	388	1,360	
Renfrewshire	2,065	2,169	2,087	2,399	1,767	1,747	1,806	1,649	1,555	1,502	1,427	1,476	1,416	1,407	1,351	1,289	1,147	984	1,021	1,001	893	781	694	584	626	497	406	366	332	1,114	
Scottish Borders	1,633	1,675	1,809	2,050	1,513	1,404	1,464	1,471	1,230	1,166	1,204	1,238	1,148	1,078	1,011	935	888	850	827	787	686	632	594	509	465	440	346	307	293	791	
Shetland Islands	329	308	310	337	236	261	243	266	245	196	208	173	171	177	159	147	149	115	123	109	108	105	95	80	76	82	58	47	52	174	
South Ayrshire	1,540	1,681	1,620	1,887	1,451	1,463	1,424	1,417	1,293	1,153	1,228	1,111	1,133	1,131	1,096	1,001	942	918	853	819	724	655	560	535	569	457	456	326	301	1,156	
South Lanarkshire	3,767	3,872	3,965	4,260	3,275	3,125	3,205	3,157	2,871	2,740	2,745	2,621	2,590	2,455	2,441	2,151	2,118	2,034	1,935	1,789	1,649	1,566	1,250	1,190	1,083	892	846	691	582	2,099	
Stirling	1,092	1,104	1,195	1,361	1,014	881	985	913	875	800	825	845	730	759	697	672	577	583	572	506	489	411	376	327	300	336	240	173	190	676	
West Dunbartonshire	1,064	1,093	1,188	1,207	996	926	951	866	813	741	739	763	698	685	675	628	582	608	565	505	487	450	360	319	303	268	229	172	139	622	
West Lothian	1,923	2,051	2,107	2,167	1,759	1,678	1,640	1,566	1,476	1,352	1,299	1,319	1,216	1,112	1,083	1,047	884	766	824	716	631	572	490	469	410	371	318	240	213	775	
NHS Board areas																															
Ayrshire & Arran	5,014	5,197	5,391	5,991	4,446	4,383	4,407	4,259	3,930	3,654	3,786	3,479	3,472	3,315	3,184	3,012	2,805	2,694	2,535	2,342	2,085	1,871	1,643	1,441	1,515	1,214	1,123	953	811	2,992	
Borders	1,633	1,675	1,809	2,050	1,513	1,404	1,464	1,471	1,230	1,166	1,204	1,238	1,148	1,078	1,011	935	888	850	827	787	686	632	594	509	465	440	346	307	293	791	
Dumfries & Galloway	2,295	2,360	2,378	2,646	2,070	2,009	2,012	1,979	1,900	1,717	1,737	1,653	1,563	1,579	1,501	1,338	1,305	1,305	1,181	1,087	1,058	965	783	793	654	620	498	461	399	1,283	
Fife	4,574	4,904	5,058	5,607	4,251	4,121	4,177	3,913	3,633	3,186	3,302	3,205	2,978	3,023	2,893	2,677	2,500	2,313	2,201	2,051	1,978	1,701	1,577	1,541	1,352	1,179	1,111	888	754	3,075	
Forth Valley	3,713	3,767	3,888	4,301	3,152	3,063	3,106	3,035	2,732	2,592	2,522	2,652	2,451	2,399	2,188	2,085	1,857	1,799	1,733	1,557	1,497	1,289	1,126	1,042	938	910	757	561	557	1,869	
Grampian	6,866	7,128	7,195	7,728	5,874	5,258	5,321	5,148	4,912	4,363	4,676	4,341	4,305	4,029	3,930	3,816	3,652	3,356	3,267	3,060	2,757	2,600	2,238	2,060	1,872	1,812	1,565	1,191	1,133	3,773	
Greater Glasgow & Clyde	12,893	13,183	13,469	14,211	11,197	10,652	10,804	10,436	9,446	9,231	9,250	9,289	9,021	8,739	8,572	8,380	7,566	7,170	7,226	6,679	6,039	5,571	4,783	4,270	4,126	3,367	2,891	2,521</			

Table 2 (continued)

Males	Age																														
	61	62	63	64	65	66	67	68	69	70	71	72	73	74	75	76	77	78	79	80	81	82	83	84	85	86	87	88	89	90+	
Scotland	31,055	31,879	32,644	35,218	26,920	25,327	25,661	24,337	22,199	20,406	20,808	20,163	19,580	18,251	17,538	16,402	15,040	13,909	13,342	12,268	10,804	9,802	8,255	7,410	6,724	5,718	4,889	3,730	3,271	10,242	
Council areas																															
Aberdeen City	1,188	1,204	1,259	1,302	956	745	798	824	766	710	715	672	730	662	596	588	587	520	564	483	424	357	291	325	266	245	173	113	129	441	
Aberdeenshire	1,663	1,822	1,807	1,826	1,452	1,288	1,336	1,210	1,087	950	1,038	981	974	847	861	800	711	674	578	567	498	474	368	360	318	340	274	170	189	499	
Angus	794	761	870	930	702	631	670	644	594	547	550	497	472	501	473	415	385	347	353	371	318	233	253	181	177	151	135	118	96	285	
Argyll & Bute	628	711	667	790	587	621	622	581	549	491	514	475	426	443	399	366	315	313	307	280	213	246	204	172	135	129	101	87	53	230	
Clackmannanshire	345	352	361	356	282	288	272	251	220	197	188	168	216	201	149	151	141	137	135	89	96	68	87	67	60	43	35	27	21	67	
Dumfries & Galloway	1,155	1,194	1,199	1,309	1,022	959	1,007	917	906	812	839	772	766	768	699	593	594	604	525	477	450	381	312	327	263	232	155	155	127	362	
Dundee City	699	831	784	922	650	677	665	670	563	526	617	578	569	484	505	453	426	400	372	381	337	315	249	213	189	209	172	128	133	395	
East Ayrshire	830	785	834	907	669	647	659	598	525	532	492	542	490	442	422	416	367	348	307	290	239	214	203	165	149	141	99	91	65	221	
East Dunbartonshire	668	651	697	761	568	571	535	512	478	447	464	448	436	444	408	398	378	333	335	270	279	245	200	172	135	122	103	95	63	229	
East Lothian	564	540	647	662	548	527	516	479	460	440	381	385	444	358	314	309	329	278	298	260	210	225	178	161	158	136	87	92	64	191	
East Renfrewshire	522	537	554	578	482	420	411	390	346	369	348	356	363	339	318	301	273	260	255	238	195	160	160	123	163	102	90	75	64	141	
Edinburgh, City of	2,337	2,414	2,431	2,658	1,841	1,798	1,754	1,665	1,501	1,428	1,458	1,428	1,381	1,328	1,367	1,254	1,194	1,142	1,048	1,028	891	811	727	626	574	495	458	348	362	1,125	
Eilean Siar	212	210	222	221	174	148	177	146	139	131	125	139	134	120	105	119	104	84	86	58	61	73	44	53	47	35	39	23	17	56	
Falkirk	944	942	949	1,095	761	769	731	773	624	628	593	617	605	533	512	482	462	389	365	322	276	271	211	214	171	150	141	91	107	257	
Fife	2,194	2,330	2,393	2,767	2,067	1,994	1,959	1,843	1,761	1,501	1,527	1,491	1,391	1,372	1,274	1,211	1,099	1,004	988	829	763	692	619	615	464	378	392	249	218	739	
Glasgow City	2,617	2,660	2,727	2,737	2,174	2,002	1,996	1,928	1,834	1,659	1,700	1,662	1,650	1,550	1,524	1,410	1,174	1,175	1,120	1,100	931	859	686	603	609	483	413	321	263	825	
Highland	1,586	1,669	1,700	1,714	1,383	1,337	1,342	1,306	1,207	960	1,052	918	943	837	789	749	765	654	635	589	536	488	355	339	345	299	269	187	153	480	
Inverclyde	495	480	484	532	446	390	436	395	331	335	304	317	317	266	281	266	243	215	231	177	163	168	122	85	105	74	82	50	29	140	
Midlothian	533	538	533	568	462	481	425	385	347	342	320	336	320	281	288	256	223	202	197	215	160	148	118	132	88	74	83	58	48	150	
Moray	602	561	609	639	508	491	514	441	452	407	436	396	373	369	330	351	334	287	227	228	211	213	167	130	130	113	85	74	56	213	
North Ayrshire	905	889	961	1,054	789	734	790	744	642	599	676	647	590	505	521	488	412	396	388	338	295	250	200	177	192	142	120	125	72	247	
North Lanarkshire	1,864	1,830	1,878	1,988	1,552	1,401	1,507	1,417	1,262	1,221	1,229	1,204	1,117	974	976	917	809	775	739	648	589	505	410	383	338	237	221	173	140	442	
Orkney Islands	129	177	141	182	123	114	143	127	122	100	131	110	100	71	71	84	68	56	50	41	56	55	46	25	29	22	28	13	21	39	
Perth & Kinross	1,032	977	1,080	1,138	938	810	863	779	753	658	709	700	625	618	564	587	522	504	486	457	394	342	328	270	262	178	175	154	118	407	
Renfrewshire	1,009	1,029	1,017	1,173	809	807	839	778	715	685	656	637	625	575	581	566	464	373	430	407	343	311	286	214	227	187	131	119	120	341	
Scottish Borders	815	815	891	1,003	740	692	720	726	571	538	568	588	543	485	501	408	395	365	358	347	301	264	257	195	182	167	120	116	98	220	
Shetland Islands	169	164	176	196	121	119	131	130	120	97	108	91	76	85	83	60	77	43	50	57	51	46	25	30	29	30	25	19	9	58	
South Ayrshire	742	842	785	912	685	707	664	680	583	543	564	529	506	534	490	453	405	400	364	324	271	255	215	208	212	159	158	114	120	278	
South Lanarkshire	1,825	1,882	1,841	2,037	1,558	1,496	1,496	1,471	1,283	1,231	1,209	1,148	1,171	1,077	1,061	900	885	832	779	704	633	563	450	438	380	292	280	193	164	629	
Stirling	546	549	585	660	514	396	460	454	407	382	390	395	327	349	308	307	251	259	227	219	187	165	146	132	90	114	89	38	44	184	
West Dunbartonshire	501	532	537	566	512	453	447	367	359	319	313	327	323	287	287	262	242	227	214	181	166	174	135	83	92	90	65	35	48	153	
West Lothian	942	1,001	1,025	1,035	845	814	776	706	692	621	594	609	577	546	481	482	406	313	331	293	267	231	203	192	145	149	91	79	60	198	
NHS Board areas																															
Ayrshire & Arran	2,477	2,516	2,580	2,873	2,143	2,088	2,113	2,022	1,750	1,674	1,732	1,718	1,586	1,481	1,433	1,357	1,184	1,144	1,059	952	805	719	618	550	553	442	377	330	257	746	
Borders	815	815	891	1,003	740	692	720	726	571	538	568	588	543	485	501	408	395	365	358	347	301	264	257	195	182	167	120	116	98	220	
Dumfries & Galloway	1,155	1,194	1,199	1,309	1,022	959	1,007	917	906	812	839	772	766	768	699	593	594	604	525	477	450	381	312	327	263	232	155	155	127	362	
Fife	2,192	2,330	2,392	2,767	2,067	1,994	1,958	1,842	1,760	1,501	1,527	1,490	1,390	1,372	1,274	1,210	1,099	1,004	988	828	763	691	619	615	464	378	392	249	218	738	
Forth Valley	1,833	1,838	1,886	2,111	1,556	1,453	1,460	1,477	1,251	1,206	1,172	1,178	1,145	1,078	967	938	851	787	725	629	560	501	442	415	318	307	264	151	173	500	
Grampian	3,453	3,587	3,675	3,767	2,916	2,524	2,648	2,475	2,305	2,067	2,189	2,049	2,077	1,878	1,787	1,739	1,632	1,481	1,369	1,278	1,133	1,044	826	815	714	698	532	357	374	1,153	
Greater Glasgow & Clyde	6,269	6,318	6,470	6,815	5,376	4,976	5,014	4,710	4,337	4,081	4,058	3,977	3,931	3,701	3,643	3,414	2,952	2,757	2,760	2,528	2,216	2,055	1,688	1,369	1,404	1,094	927	760	626	1,963	
Highland	2,214	2,380	2,367	2,504	1,970	1,958	1,964	1,887	1,756	1,451	1,566	1,393	1,369	1,280	1,188	1,115	1,080	967	942	869	749	734	559	511	480	428	370	274	206	710	
Lanarkshire	3,234	3,286	3,272	3,562	2,730	2,568	2,660	2,549	2,272	2,185	2,167	2,125	2,076	1,814	1,794	1,608	1,519	1,433	1,347	1,198	1,083	934	762	733	647	493	459	304	264	948	
Lothian	4,375	4,494	4,637	4,919	3,694	3,617	3,468	3,235	3,001	2,831	2,753	2,757	2,720	2,515	2,451	2,301	2,152	1,936	1,874	1,796	1,528	1,415	1,227	1,111	967	854	719	578	534		

Table 2 (continued)

Females	Age																														
	61	62	63	64	65	66	67	68	69	70	71	72	73	74	75	76	77	78	79	80	81	82	83	84	85	86	87	88	89	90+	
Scotland	32,553	33,540	34,493	37,493	28,518	27,608	27,953	27,555	25,455	24,001	24,640	23,956	23,382	22,593	22,209	21,345	20,035	19,170	19,009	17,873	16,746	15,390	13,616	12,681	12,108	10,627	9,690	8,220	7,455	27,556	
Council areas																															
Aberdeen City	1,158	1,269	1,216	1,336	1,004	888	881	921	901	817	908	844	816	817	827	783	760	749	787	712	681	668	550	495	467	425	394	332	293	954	
Aberdeenshire	1,635	1,676	1,688	1,875	1,433	1,300	1,272	1,234	1,214	1,038	1,125	1,031	979	927	945	852	851	772	754	728	678	633	618	514	479	478	467	351	325	1,253	
Angus	782	896	891	1,034	695	713	709	685	622	547	616	572	569	555	528	554	511	442	484	461	394	393	336	336	320	283	272	231	194	618	
Argyll & Bute	688	702	761	910	651	575	592	555	552	522	573	515	486	488	472	456	415	389	411	347	363	303	270	254	277	208	212	137	164	643	
Clackmannanshire	342	348	365	404	280	304	293	296	262	241	218	247	213	251	219	186	138	147	146	145	153	127	108	93	98	82	89	67	65	190	
Dumfries & Galloway	1,140	1,166	1,179	1,337	1,048	1,050	1,005	1,062	994	905	898	881	797	811	802	745	711	701	656	610	608	584	471	466	391	388	343	306	272	921	
Dundee City	880	815	878	985	729	722	633	646	666	693	659	665	706	642	651	610	621	593	603	564	512	488	435	386	397	369	345	292	259	830	
East Ayrshire	807	827	891	976	686	721	683	676	646	606	614	535	549	597	521	511	494	470	447	406	382	313	291	262	284	213	205	192	180	603	
East Dunbartonshire	741	767	738	809	629	647	642	615	568	558	543	571	542	537	484	489	480	434	417	395	371	345	329	319	255	265	209	158	176	578	
East Lothian	641	621	708	710	541	541	609	525	498	486	488	452	495	399	435	434	406	371	354	327	351	310	258	262	254	191	188	162	153	564	
East Renfrewshire	541	602	615	663	454	505	525	514	431	432	433	410	440	391	428	410	394	353	396	355	334	300	279	284	237	180	199	163	159	529	
Edinburgh, City of	2,606	2,612	2,540	2,910	2,150	1,921	1,978	1,942	1,791	1,683	1,759	1,767	1,883	1,711	1,747	1,671	1,589	1,592	1,617	1,539	1,445	1,313	1,275	1,176	1,144	957	888	813	752	2,789	
Eilean Siar	203	196	166	217	166	153	166	187	143	178	172	140	141	147	132	122	133	143	117	97	105	109	101	79	86	78	65	63	65	206	
Falkirk	995	1,027	1,030	1,085	818	826	830	802	749	727	698	783	693	659	617	598	545	541	517	499	485	417	347	338	311	303	252	208	174	720	
Fife	2,383	2,575	2,666	2,843	2,186	2,127	2,220	2,072	1,873	1,685	1,776	1,715	1,588	1,651	1,619	1,467	1,402	1,310	1,213	1,223	1,215	1,010	958	927	888	801	720	639	536	2,337	
Glasgow City	2,742	2,765	2,841	2,995	2,386	2,287	2,278	2,382	2,123	2,190	2,263	2,289	2,236	2,157	2,178	2,379	2,103	2,007	2,094	1,889	1,728	1,610	1,467	1,268	1,245	1,041	864	779	718	2,769	
Highland	1,606	1,621	1,733	1,717	1,366	1,309	1,381	1,364	1,200	1,182	1,181	1,088	1,102	993	1,009	927	860	880	851	813	710	724	644	602	525	475	460	382	350	1,262	
Inverclyde	521	529	563	573	481	454	468	486	385	395	416	397	396	404	386	327	314	338	355	346	295	289	194	223	210	154	135	165	132	473	
Midlothian	544	597	585	668	507	460	478	435	394	390	394	369	380	323	365	333	312	262	289	263	247	220	186	174	167	167	144	117	72	398	
Moray	620	596	616	750	521	546	520	518	492	441	454	417	433	407	371	442	409	354	357	342	265	255	244	236	212	211	172	151	141	413	
North Ayrshire	932	1,015	1,085	1,167	851	818	851	824	824	764	776	644	710	640	624	596	590	562	540	489	445	439	389	302	321	261	243	219	193	765	
North Lanarkshire	1,982	1,993	2,077	2,067	1,671	1,671	1,751	1,764	1,468	1,428	1,497	1,499	1,478	1,389	1,328	1,251	1,143	1,089	984	967	921	825	673	629	605	521	480	358	343	1,320	
Orkney Islands	144	134	159	157	124	128	124	138	142	97	140	102	107	101	88	85	83	68	75	77	79	53	51	47	48	43	32	24	30	122	
Perth & Kinross	1,056	1,052	1,078	1,219	914	941	879	919	889	762	766	801	689	730	712	685	609	557	578	579	531	499	440	488	412	378	372	302	270	953	
Renfrewshire	1,056	1,140	1,070	1,226	958	940	967	871	840	817	771	839	791	832	770	723	683	611	591	594	550	470	408	370	399	310	275	242	212	773	
Scottish Borders	818	860	918	1,047	773	712	744	745	659	628	636	650	605	593	510	527	493	485	469	440	385	368	337	314	283	273	226	191	195	571	
Shetland Islands	160	144	134	141	115	142	112	136	125	99	100	82	95	92	76	87	72	72	73	52	57	59	70	50	47	52	33	28	43	116	
South Ayrshire	798	839	835	975	766	756	760	737	710	610	664	582	627	597	606	548	537	518	489	495	453	400	345	327	357	298	298	212	181	878	
South Lanarkshire	1,942	1,990	2,124	2,223	1,717	1,629	1,709	1,686	1,588	1,509	1,536	1,473	1,419	1,378	1,380	1,251	1,233	1,202	1,156	1,085	1,016	1,003	800	752	703	600	566	498	418	1,470	
Stirling	546	555	610	701	500	485	525	459	468	418	435	450	403	410	389	365	326	324	345	287	302	246	230	195	210	222	151	135	146	492	
West Dunbartonshire	563	561	651	641	484	473	504	499	454	422	426	436	375	398	388	366	340	381	351	324	321	276	225	236	211	178	164	137	91	469	
West Lothian	981	1,050	1,082	1,132	914	864	864	860	784	731	705	710	639	566	602	565	478	453	493	423	364	341	287	277	265	222	227	161	153	577	
NHS Board areas																															
Ayrshire & Arran	2,537	2,681	2,811	3,118	2,303	2,295	2,294	2,237	2,180	1,980	2,054	1,761	1,886	1,834	1,751	1,655	1,621	1,550	1,476	1,390	1,280	1,152	1,025	891	962	772	746	623	554	2,246	
Borders	818	860	918	1,047	773	712	744	745	659	628	636	650	605	593	510	527	493	485	469	440	385	368	337	314	283	273	226	191	195	571	
Dumfries & Galloway	1,140	1,166	1,179	1,337	1,048	1,050	1,005	1,062	994	905	898	881	797	811	802	745	711	701	656	610	608	584	471	466	391	388	343	306	272	921	
Fife	2,382	2,574	2,666	2,840	2,184	2,127	2,219	2,071	1,873	1,685	1,775	1,715	1,588	1,651	1,619	1,467	1,401	1,309	1,213	1,223	1,215	1,010	958	926	888	801	719	639	536	2,337	
Forth Valley	1,880	1,929	2,002	2,190	1,596	1,610	1,646	1,558	1,481	1,386	1,350	1,474	1,306	1,321	1,221	1,147	1,006	1,012	1,008	928	937	788	684	627	620	603	493	410	384	1,369	
Grampian	3,413	3,541	3,520	3,961	2,958	2,734	2,673	2,673	2,607	2,296	2,487	2,292	2,228	2,151	2,143	2,077	2,020	1,875	1,898	1,782	1,624	1,556	1,412	1,245	1,158	1,114	1,033	834	759	2,620	
Greater Glasgow & Clyde	6,624	6,865	6,999	7,396	5,821	5,676	5,790	5,726	5,109	5,150	5,192	5,312	5,090	5,038	4,929	4,966	4,614	4,413	4,466	4,151	3,823	3,516	3,095	2,901	2,722	2,273	1,964	1,761	1,590	5,945	
Highland	2,294	2,323	2,494	2,627	2,017	1,884	1,973	1,919	1,752	1,704	1,754	1,603	1,588	1,481	1,481	1,383	1,275	1,269	1,262	1,160	1,073	1,027	914	856	802	683	672	519	514	1,905	
Lanarkshire	3,470	3,486	3,684	3,805	2,959	2,937	3,059	3,090	2,750	2,604	2,698	2,610	2,591	2,447	2,418	2,233	2,080	2,004	1,878	1,808	1,715	1,604	1,282	1,179	1,145	980	927	743	660	2,480	
Lothian	4,769	4,878	4,914	5,417	4,115	3,784	3,928	3,762	3,465	3,288	3,343	3,297	3,397	3,000	3,148	3,001	2,78														

Table 3: Estimated population by sex, five year age group and administrative area, mid-2011

Area	Age group																		Area	Persons		
	All Ages	0 - 4	5 - 9	10 - 14	15 - 19	20 - 24	25 - 29	30 - 34	35 - 39	40 - 44	45 - 49	50 - 54	55 - 59	60 - 64	65 - 69	70 - 74	75 - 79	80 - 84			85 - 89	90+
Scotland	5,254,800	297,741	273,374	282,776	317,880	367,138	358,433	322,100	321,711	384,643	402,552	374,031	328,047	331,987	261,533	217,780	177,999	124,845	72,432	37,798	Scotland	
Council areas																					Council areas	
Aberdeen City	220,420	12,562	10,167	9,970	12,739	20,424	20,747	17,511	14,363	14,911	15,096	14,517	12,769	12,290	8,684	7,691	6,761	4,986	2,837	1,395	Aberdeen City	
Aberdeenshire	247,600	14,831	14,145	14,762	14,796	13,359	12,492	12,863	15,377	19,866	20,365	18,941	17,396	17,312	12,826	9,890	7,798	5,438	3,391	1,752	Aberdeenshire	
Angus	110,630	5,993	5,899	6,267	6,478	5,883	5,377	5,006	6,240	7,731	8,743	8,187	7,596	8,491	6,665	5,426	4,492	3,276	1,977	903	Angus	
Argyll & Bute	89,590	4,065	4,137	4,830	5,292	5,060	4,428	3,624	4,799	6,352	6,968	6,802	6,285	7,259	5,885	4,933	3,843	2,652	1,503	873	Argyll & Bute	
Clackmannanshire	50,770	3,065	2,812	2,898	3,258	3,164	2,836	2,723	3,111	3,982	4,109	3,654	3,318	3,526	2,748	2,140	1,549	1,033	587	257	Clackmannanshire	
Dumfries & Galloway	148,060	7,571	7,212	7,743	8,591	7,830	6,698	6,174	7,516	10,138	11,823	11,022	10,469	11,823	9,970	8,249	6,630	4,686	2,632	1,283	Dumfries & Galloway	
Dundee City	145,570	8,425	7,205	6,948	9,779	14,099	11,881	9,710	7,381	8,226	9,854	9,581	7,997	8,292	6,621	6,139	5,234	3,880	2,493	1,225	Dundee City	
East Ayrshire	120,200	6,745	6,377	6,533	7,497	7,793	6,869	6,099	7,254	9,319	9,537	8,735	7,628	8,394	6,510	5,399	4,303	2,765	1,619	824	East Ayrshire	
East Dunbartonshire	104,570	5,137	5,632	6,368	6,850	6,276	5,491	4,571	5,017	7,293	8,711	8,561	7,227	7,212	5,765	4,990	4,156	2,925	1,581	807	East Dunbartonshire	
East Lothian	98,170	5,916	5,706	6,009	6,242	5,699	4,738	4,212	5,866	7,966	7,941	7,374	6,297	6,322	5,244	4,328	3,528	2,542	1,485	755	East Lothian	
East Renfrewshire	89,850	4,885	5,483	6,063	6,089	5,369	4,368	3,865	4,497	6,519	7,564	7,260	5,973	5,638	4,478	3,881	3,388	2,428	1,432	670	East Renfrewshire	
Edinburgh, City of	495,360	26,709	21,326	21,091	27,808	45,426	52,566	46,008	35,345	34,307	33,244	30,664	25,488	25,454	18,341	15,826	14,221	10,831	6,791	3,914	Edinburgh, City of	
Eilean Siar	26,080	1,273	1,316	1,442	1,463	1,127	1,065	1,243	1,316	1,953	2,033	1,970	1,880	2,017	1,599	1,427	1,145	780	518	262	Eilean Siar	
Falkirk	154,380	9,434	8,504	8,723	9,541	9,464	8,873	9,419	10,332	12,234	12,212	10,831	9,297	10,004	7,683	6,536	5,028	3,380	1,908	977	Falkirk	
Fife	367,370	21,297	19,481	20,016	22,910	26,921	21,503	19,850	21,440	27,033	27,768	25,836	23,022	24,695	20,102	15,697	12,587	8,851	5,285	3,076	Fife	
Glasgow City	598,830	35,415	29,049	27,907	34,794	53,558	60,459	52,191	42,344	41,833	42,619	38,717	32,025	27,538	21,390	19,356	17,164	12,141	6,736	3,594	Glasgow City	
Highland	222,370	12,226	11,606	12,448	12,558	11,361	11,316	11,771	12,920	15,923	17,796	17,123	16,262	16,503	13,195	10,256	8,119	5,800	3,445	1,742	Highland	
Inverclyde	79,220	4,182	4,138	4,380	4,795	5,121	4,883	4,165	4,327	5,648	6,555	6,046	5,126	5,268	4,272	3,547	2,956	2,062	1,136	613	Inverclyde	
Midlothian	82,370	4,998	4,623	5,000	5,167	5,316	4,711	4,168	4,764	6,251	6,413	6,072	5,288	5,614	4,374	3,455	2,727	1,863	1,018	548	Midlothian	
Moray	87,260	4,921	4,247	4,926	5,596	5,143	4,424	3,994	5,047	6,787	6,990	6,365	5,776	6,184	5,003	4,133	3,462	2,291	1,345	626	Moray	
North Ayrshire	135,130	7,448	7,320	7,533	8,508	8,492	7,152	6,604	7,500	9,716	10,546	9,782	8,988	9,782	7,867	6,551	5,117	3,324	1,888	1,012	North Ayrshire	
North Lanarkshire	326,680	20,293	19,281	19,548	20,246	20,944	21,180	19,509	21,333	25,586	25,766	23,186	20,213	19,356	15,464	13,036	10,011	6,550	3,416	1,762	North Lanarkshire	
Orkney Islands	20,160	1,050	1,007	1,069	1,199	1,029	951	1,018	1,117	1,523	1,633	1,543	1,465	1,503	1,285	1,059	728	530	290	161	Orkney Islands	
Perth & Kinross	149,520	7,531	7,337	8,400	8,685	9,482	10,073	7,553	8,006	10,252	11,496	10,535	9,766	10,548	8,685	7,058	5,804	4,328	2,621	1,360	Perth & Kinross	
Renfrewshire	170,650	9,611	9,203	9,433	10,165	11,234	10,910	10,005	9,710	13,035	14,116	12,829	10,646	10,915	8,524	7,228	5,792	3,953	2,227	1,114	Renfrewshire	
Scottish Borders	113,150	6,042	6,108	6,245	6,535	5,776	4,741	4,804	6,297	8,689	9,250	8,780	7,844	8,762	7,082	5,834	4,511	3,208	1,851	791	Scottish Borders	
Shetland Islands	22,500	1,329	1,272	1,372	1,381	1,200	1,147	1,342	1,440	1,600	1,812	1,608	1,550	1,592	1,251	925	693	497	315	174	Shetland Islands	
South Ayrshire	111,560	5,549	5,396	5,879	6,338	6,579	5,769	5,159	5,877	7,660	8,587	8,493	7,810	8,292	7,048	5,756	4,810	3,293	2,109	1,156	South Ayrshire	
South Lanarkshire	312,660	17,872	17,079	17,877	19,170	19,070	19,031	17,638	19,126	23,841	24,817	23,693	20,759	19,587	15,633	13,151	10,679	7,444	4,094	2,099	South Lanarkshire	
Stirling	90,770	4,574	4,867	5,590	6,889	7,987	4,979	4,064	4,853	6,625	6,960	6,272	5,484	5,874	4,668	3,959	3,101	2,109	1,239	676	Stirling	
West Dunbartonshire	90,360	5,389	4,777	4,861	5,606	6,058	6,184	5,075	5,142	6,605	7,139	6,717	6,040	5,677	4,552	3,626	3,058	2,121	1,111	622	West Dunbartonshire	
West Lothian	172,990	11,403	10,662	10,645	10,915	10,894	10,591	10,162	11,803	14,639	14,089	12,335	10,363	10,263	8,119	6,298	4,604	2,878	1,552	775	West Lothian	
NHS Board areas																					NHS Board areas	
Ayrshire & Arran	366,890	19,742	19,093	19,945	22,343	22,864	19,790	17,862	20,631	26,695	28,670	27,010	24,426	26,468	21,425	17,706	14,230	9,382	5,616	2,992	Ayrshire & Arran	
Borders	113,150	6,042	6,108	6,245	6,535	5,776	4,741	4,804	6,297	8,689	9,250	8,780	7,844	8,762	7,082	5,834	4,511	3,208	1,851	791	Borders	
Dumfries & Galloway	148,060	7,571	7,212	7,743	8,591	7,830	6,698	6,174	7,516	10,138	11,823	11,022	10,469	11,823	9,970	8,249	6,630	4,686	2,632	1,283	Dumfries & Galloway	
Fife	367,292	21,297	19,482	20,009	22,902	26,918	21,499	19,848	21,441	27,022	27,759	25,831	23,017	24,687	20,095	15,694	12,584	8,848	5,284	3,075	Fife	
Forth Valley	295,541	17,066	16,164	17,197	19,677	20,603	16,677	16,173	18,272	22,811	23,257	20,734	18,067	19,374	15,088	12,616	9,662	6,511	3,723	1,869	Forth Valley	
Grampian	555,280	32,314	28,559	29,658	33,131	38,926	37,663	34,368	34,787	41,564	42,451	39,823	35,941	35,786	26,513	21,714	18,021	12,715	7,573	3,773	Grampian	
Greater Glasgow & Clyde	1,210,254	69,500	62,723	63,242	72,732	92,202	97,059	84,948	76,221	86,868	92,549	85,810	72,154	66,896	52,535	45,530	38,914	27,342	15,121	7,908	Greater Glasgow & Clyde	
Highland	311,960	16,291	15,743	17,278	17,850	16,421	15,744	15,395	17,719	22,275	24,764	23,925	22,547	23,762	19,080	15,189	11,962	8,452	4,948	2,615	Highland	
Lanarkshire	563,185	33,342	31,956	33,230	35,006	35,455	35,408	32,081	35,303	43,544	44,807	41,251	35,908	34,341	27,574	23,317	18,314	12,298	6,622	3,428	Lanarkshire	
Lothian	848,727	48,980	42,301	42,730	50,130	67,325	72,658	64,565	57,769	63,142	61,646	56,419	47,417	47,639	36,069	29,901	25,077	18,117	10,850	5,992	Lothian	
Orkney	20,160	1,050	1,007	1,069	1,199	1,029	951	1,018	1,117	1,523	1,633	1,543	1,465	1,503	1,285	1,059	728	530	290	161	Orkney	
Shetland	22,500	1,329	1,272	1,372	1,381	1,200	1,147	1,342	1,440	1,600	1,812	1,608	1,550	1,592	1,251	925	693	497	315	1		

Table 3 (continued)

Area	Age group																		Area		
	All Ages	0 - 4	5 - 9	10 - 14	15 - 19	20 - 24	25 - 29	30 - 34	35 - 39	40 - 44	45 - 49	50 - 54	55 - 59	60 - 64	65 - 69	70 - 74	75 - 79	80 - 84		85 - 89	90+
	2,548,200	151,975	139,832	145,021	162,460	186,473	182,321	162,928	155,436	184,202	192,578	180,504	160,001	161,473	124,444	99,208	76,231	48,539		24,332	10,242
Scotland																					
Council areas																					
Aberdeen City	109,253	6,428	5,118	5,270	6,227	9,338	10,775	10,067	7,510	7,584	7,405	7,194	6,505	6,152	4,089	3,489	2,855	1,880	926	441	Aberdeen City
Aberdeenshire	122,918	7,601	7,266	7,708	7,646	7,136	6,421	6,314	7,248	9,675	10,085	9,509	8,667	8,798	6,373	4,790	3,624	2,267	1,291	499	Aberdeenshire
Angus	53,684	2,983	3,010	3,234	3,349	3,139	2,827	2,453	2,978	3,611	4,268	3,909	3,714	4,110	3,241	2,567	1,973	1,356	677	285	Angus
Argyll & Bute	44,618	2,089	2,119	2,477	2,773	2,893	2,541	1,986	2,391	3,136	3,386	3,385	3,120	3,463	2,960	2,349	1,700	1,115	505	230	Argyll & Bute
Clackmannanshire	24,855	1,550	1,481	1,471	1,634	1,664	1,535	1,335	1,493	1,935	2,012	1,784	1,602	1,703	1,313	970	713	407	186	67	Clackmannanshire
Dumfries & Galloway	71,663	3,846	3,687	3,954	4,455	4,082	3,363	2,964	3,520	4,799	5,708	5,245	5,087	5,929	4,811	3,957	3,015	1,947	932	362	Dumfries & Galloway
Dundee City	69,453	4,321	3,722	3,516	4,713	6,797	6,192	5,053	3,429	4,006	4,477	4,483	3,897	3,971	3,225	2,774	2,156	1,495	831	395	Dundee City
East Ayrshire	58,230	3,480	3,251	3,381	3,870	4,037	3,449	2,873	3,559	4,424	4,563	4,168	3,700	4,142	3,098	2,498	1,860	1,111	545	221	East Ayrshire
East Dunbartonshire	50,416	2,650	2,925	3,321	3,622	3,463	2,907	2,346	2,166	3,363	4,040	4,027	3,465	3,453	2,664	2,239	1,852	1,166	518	229	East Dunbartonshire
East Lothian	47,149	2,986	2,934	2,996	3,204	2,957	2,323	1,985	2,736	3,739	3,856	3,571	3,067	2,967	2,530	2,008	1,528	1,034	537	191	East Lothian
East Renfrewshire	43,091	2,529	2,781	3,147	3,159	2,947	2,312	1,912	1,992	2,912	3,508	3,584	2,895	2,671	2,049	1,775	1,407	876	494	141	East Renfrewshire
Edinburgh, City of	239,722	13,488	11,104	10,886	13,953	21,678	25,717	23,319	17,837	17,037	15,931	14,788	12,764	12,188	8,559	7,023	6,005	4,083	2,237	1,125	Edinburgh, City of
Eilean Siar	12,818	689	650	728	758	660	553	578	776	984	990	1,016	949	1,050	784	649	498	289	161	56	Eilean Siar
Falkirk	74,885	4,720	4,371	4,494	5,082	4,869	4,281	4,638	4,976	5,896	5,902	5,318	4,462	4,821	3,658	2,976	2,210	1,294	660	257	Falkirk
Fife	177,347	10,967	9,927	10,262	11,551	13,275	11,097	9,571	10,297	13,008	13,259	12,641	11,168	11,884	9,624	7,282	5,576	3,518	1,701	739	Fife
Glasgow City	290,557	17,845	14,865	14,235	17,661	26,763	30,828	27,660	21,591	20,198	19,949	18,329	15,573	13,409	9,934	8,221	6,403	4,179	2,089	825	Glasgow City
Highland	109,138	6,325	5,928	6,507	6,543	6,150	5,813	5,905	6,234	7,541	8,659	8,335	8,051	8,230	6,575	4,710	3,592	2,307	1,253	480	Highland
Inverclyde	37,840	2,224	2,136	2,271	2,451	2,672	2,474	2,121	2,023	2,569	3,060	2,886	2,469	2,516	1,998	1,539	1,236	715	340	140	Inverclyde
Midlothian	39,321	2,562	2,405	2,461	2,660	2,759	2,340	1,967	2,161	2,941	2,901	2,828	2,543	2,654	2,100	1,599	1,166	773	351	150	Midlothian
Moray	43,806	2,554	2,196	2,569	2,964	2,903	2,361	2,148	2,568	3,457	3,534	3,197	2,824	2,995	2,406	1,981	1,529	949	458	213	Moray
North Ayrshire	64,148	3,794	3,771	3,783	4,390	4,471	3,498	3,154	3,407	4,395	4,877	4,594	4,266	4,669	3,699	3,017	2,205	1,260	651	247	North Ayrshire
North Lanarkshire	157,301	10,369	9,900	9,950	10,519	10,736	10,624	9,529	10,079	12,150	12,304	10,962	9,666	9,327	7,139	5,745	4,216	2,535	1,109	442	North Lanarkshire
Orkney Islands	9,966	548	483	577	580	566	490	491	535	754	827	763	734	773	629	512	329	223	113	39	Orkney Islands
Perth & Kinross	73,545	3,862	3,786	4,288	4,505	5,230	5,442	4,012	3,878	4,734	5,608	5,145	4,699	5,155	4,143	3,310	2,663	1,791	887	407	Perth & Kinross
Renfrewshire	81,823	4,890	4,628	4,865	5,188	5,723	5,542	4,951	4,568	6,070	6,783	6,080	5,057	5,252	3,948	3,178	2,414	1,561	784	341	Renfrewshire
Scottish Borders	54,925	3,055	3,137	3,183	3,322	2,938	2,349	2,406	2,926	4,229	4,519	4,212	3,874	4,310	3,449	2,722	2,027	1,364	683	220	Scottish Borders
Shetland Islands	11,405	707	671	676	745	642	617	665	714	814	936	804	787	857	621	457	313	209	112	58	Shetland Islands
South Ayrshire	53,536	2,850	2,708	3,036	3,210	3,424	2,947	2,532	2,797	3,654	4,070	4,045	3,814	4,028	3,319	2,676	2,112	1,273	763	278	South Ayrshire
South Lanarkshire	149,883	9,050	8,598	9,063	9,787	9,935	9,690	8,607	8,946	11,423	11,670	11,399	9,964	9,428	7,304	5,836	4,457	2,788	1,309	629	South Lanarkshire
Stirling	43,325	2,371	2,513	2,852	3,362	3,865	2,581	1,804	2,145	2,993	3,296	3,125	2,677	2,907	2,231	1,843	1,352	849	375	184	Stirling
West Dunbartonshire	42,967	2,748	2,427	2,471	2,931	3,159	3,099	2,447	2,397	3,081	3,315	3,169	2,892	2,670	2,138	1,569	1,232	739	330	153	West Dunbartonshire
West Lothian	84,612	5,894	5,334	5,389	5,646	5,602	5,333	5,135	5,559	7,090	6,880	6,009	5,049	4,991	3,833	2,947	2,013	1,186	524	198	West Lothian
NHS Board areas																					
Ayrshire & Arran	175,914	10,124	9,730	10,200	11,470	11,932	9,894	8,559	9,763	12,473	13,510	12,807	11,780	12,839	10,116	8,191	6,177	3,644	1,959	746	Ayrshire & Arran
Borders	54,925	3,055	3,137	3,183	3,322	2,938	2,349	2,406	2,926	4,229	4,519	4,212	3,874	4,310	3,449	2,722	2,027	1,364	683	220	Borders
Dumfries & Galloway	71,663	3,846	3,687	3,954	4,455	4,082	3,363	2,964	3,520	4,799	5,708	5,245	5,087	5,929	4,811	3,957	3,015	1,947	932	362	Dumfries & Galloway
Fife	177,309	10,967	9,927	10,259	11,545	13,273	11,095	9,570	10,299	13,004	13,255	12,638	11,165	11,881	9,621	7,280	5,575	3,516	1,701	738	Fife
Forth Valley	142,878	8,638	8,355	8,813	10,072	10,391	8,391	7,757	8,595	10,808	11,195	10,220	8,727	9,412	7,197	5,779	4,268	2,547	1,213	500	Forth Valley
Grampian	275,977	16,583	14,580	15,547	16,837	19,377	19,557	18,529	17,326	20,716	21,024	19,900	17,996	17,945	12,868	10,260	8,008	5,096	2,675	1,153	Grampian
Greater Glasgow & Clyde	583,070	35,337	32,028	32,440	37,239	47,052	49,460	43,878	37,130	41,082	43,332	40,766	34,795	32,214	24,413	19,748	15,526	9,856	4,811	1,963	Greater Glasgow & Clyde
Highland	153,756	8,414	8,047	8,984	9,316	9,043	8,354	7,891	8,625	10,677	12,045	11,720	11,171	11,693	9,535	7,059	5,292	3,422	1,758	710	Highland
Lanarkshire	271,083	17,001	16,254	16,894	18,089	18,365	17,983	15,698	16,642	20,716	21,332	19,688	17,215	16,534	12,779	10,367	7,701	4,710	2,167	948	Lanarkshire
Lothian	410,740	24,904	21,767	21,724	25,465	32,984	35,753	32,418	28,299	30,790	29,551	27,185	23,407	22,797	17,015	13,576	10,714	7,077	3,652	1,662	Lothian
Orkney	9,966	548	483	577	580	566	490	491	535	754	827	763	734	773	629	512	329	223	113	39	Orkney
Shetland	11,405	707	671	676	745	642	617	665	714	814	936	804	787	857	621	457	313	209	112	58	Shetland
Tayside	196,696	11,162	10,516	11,042	12,567	15,168	14,462	11,524	10,286	12,356	14,354	13,540	12,314	13,239	10,606	8,651	6,788	4,639	2,395	1,087	Tayside
Western Isles	12,818	689	650	728	758	660	553	578	776	984	990	1,016	949	1,050	784	649	498	289	161	56	Western Isles

Table 4: Components of population change by administrative area, mid-2010 to mid-2011

	Estimated population 30 June 2010	Births	Deaths	Natural change	Estimated ¹ net civilian migration	Other ² changes	Estimated population 30 June 2011	Population change	
								Number	%
Scotland	5,222,100	58,766	53,957	4,809	26,979	912	5,254,800	32,700	0.6
Council areas									
Aberdeen City	217,120	2,646	2,024	622	2,666	12	220,420	3,300	1.5
Aberdeenshire	245,780	2,722	2,186	536	1,429	-145	247,600	1,820	0.7
Angus	110,570	1,110	1,205	-95	145	10	110,630	60	0.1
Argyll & Bute	89,200	766	1,065	-299	202	487	89,590	390	0.4
Clackmannanshire	50,630	594	486	108	-58	90	50,770	140	0.3
Dumfries & Galloway	148,190	1,447	1,798	-351	200	21	148,060	-130	-0.1
Dundee City	144,290	1,752	1,730	22	1,258	0	145,570	1,280	0.9
East Ayrshire	120,240	1,322	1,341	-19	-106	85	120,200	-40	0.0
East Dunbartonshire	104,580	975	971	4	-14	0	104,570	-10	0.0
East Lothian	97,500	1,116	989	127	543	0	98,170	670	0.7
East Renfrewshire	89,540	851	856	-5	315	0	89,850	310	0.4
Edinburgh, City of	486,120	5,673	4,270	1,403	7,490	347	495,360	9,240	1.9
Eilean Siar	26,190	227	345	-118	7	1	26,080	-110	-0.4
Falkirk	153,280	1,792	1,557	235	956	-91	154,380	1,100	0.7
Fife	365,020	4,241	3,714	527	1,819	4	367,370	2,350	0.6
Glasgow City	592,820	7,550	6,448	1,102	4,899	9	598,830	6,010	1.0
Highland	221,630	2,365	2,390	-25	778	-13	222,370	740	0.3
Inverclyde	79,770	799	1,017	-218	-315	-17	79,220	-550	-0.7
Midlothian	81,140	961	812	149	519	562	82,370	1,230	1.5
Moray	87,720	965	957	8	63	-531	87,260	-460	-0.5
North Ayrshire	135,180	1,461	1,518	-57	7	0	135,130	-50	0.0
North Lanarkshire	326,360	3,889	3,381	508	-184	-4	326,680	320	0.1
Orkney Islands	20,110	202	232	-30	80	0	20,160	50	0.3
Perth & Kinross	147,780	1,439	1,496	-57	1,756	41	149,520	1,740	1.2
Renfrewshire	170,250	1,879	1,794	85	315	0	170,650	400	0.2
Scottish Borders	112,870	1,130	1,241	-111	391	0	113,150	280	0.3
Shetland Islands	22,400	269	226	43	57	0	22,500	100	0.5
South Ayrshire	111,440	1,096	1,419	-323	441	2	111,560	120	0.1
South Lanarkshire	311,880	3,477	3,212	265	515	0	312,660	780	0.3
Stirling	89,850	786	790	-4	914	10	90,770	920	1.0
West Dunbartonshire	90,570	1,053	1,068	-15	-195	0	90,360	-210	-0.2
West Lothian	172,080	2,211	1,419	792	86	32	172,990	910	0.5
NHS Board areas									
Ayrshire & Arran	366,860	3,879	4,278	-399	342	87	366,890	30	0.0
Borders	112,870	1,130	1,241	-111	391	0	113,150	280	0.3
Dumfries & Galloway	148,190	1,447	1,798	-351	200	21	148,060	-130	-0.1
Fife	364,945	4,241	3,714	527	1,816	4	367,292	2,347	0.6
Forth Valley	293,386	3,173	2,837	336	1,810	9	295,541	2,155	0.7
Grampian	550,620	6,333	5,167	1,166	4,158	-664	555,280	4,660	0.9
Greater Glasgow & Clyde	1,203,870	14,041	12,878	1,163	5,229	-8	1,210,254	6,384	0.5
Highland	310,830	3,131	3,455	-324	980	474	311,960	1,130	0.4
Lanarkshire	562,477	6,444	5,871	573	139	-4	563,185	708	0.1
Lothian	836,711	9,949	7,491	2,458	8,617	941	848,727	12,016	1.4
Orkney	20,110	202	232	-30	80	0	20,160	50	0.3
Shetland	22,400	269	226	43	57	0	22,500	100	0.5
Tayside	402,641	4,300	4,424	-124	3,153	51	405,721	3,080	0.8
Western Isles	26,190	227	345	-118	7	1	26,080	-110	-0.4

Footnotes

1) Includes movements to/from armed forces.

2) Includes changes in the number of prisoners and armed forces stationed in Scotland.

Table 5: Components of migration by administrative area, mid-2010 to mid-2011

	In-migration				Out-migration				Net-migration			
	Total ²	Within Scotland	Rest of UK ¹	Overseas	Total ²	Within Scotland	Rest of UK ¹	Overseas	Total ³	Within Scotland	Rest of UK ¹	Overseas
Scotland	87,879	n/a	45,579	42,300	60,921	n/a	44,021	16,900	26,958	0	1,558	25,400
Council areas												
Aberdeen City	13,541	6,009	2,480	5,052	10,872	7,040	2,518	1,314	2,669	-1,031	-38	3,738
Aberdeenshire	8,876	5,827	1,669	1,380	7,445	5,048	1,820	577	1,431	779	-151	803
Angus	3,650	2,580	572	498	3,504	2,623	661	220	146	-43	-89	278
Argyll & Bute	3,812	2,043	1,411	358	3,607	2,171	1,108	328	205	-128	303	30
Clackmannanshire	1,538	1,125	308	105	1,600	1,156	342	102	-62	-31	-34	3
Dumfries & Galloway	4,029	1,652	2,034	343	3,830	1,739	1,680	411	199	-87	354	-68
Dundee City	7,303	3,792	1,360	2,151	6,049	3,757	1,599	693	1,254	35	-239	1,458
East Ayrshire	3,160	2,292	757	111	3,264	2,294	775	195	-104	-2	-18	-84
East Dunbartonshire	3,109	2,467	480	162	3,122	2,452	526	144	-13	15	-46	18
East Lothian	3,723	2,564	743	416	3,177	2,330	652	195	546	234	91	221
East Renfrewshire	3,196	2,617	443	136	2,885	2,307	447	131	311	310	-4	5
Edinburgh, City of	29,667	10,872	8,079	10,716	22,176	11,208	7,843	3,125	7,491	-336	236	7,591
Eilean Siar	911	574	280	57	904	609	231	64	7	-35	49	-7
Falkirk	4,231	3,001	752	478	3,274	2,350	649	275	957	651	103	203
Fife	11,306	5,851	3,258	2,197	9,492	5,405	3,053	1,034	1,814	446	205	1,163
Glasgow City ⁴	29,043	13,698	5,490	9,855	24,143	14,963	5,997	3,183	4,900	-1,265	-507	6,672
Highland	7,598	3,965	2,655	978	6,826	4,134	2,078	614	772	-169	577	364
Inverclyde	1,292	871	320	101	1,603	1,113	389	101	-311	-242	-69	0
Midlothian	2,778	2,190	425	163	2,257	1,825	335	97	521	365	90	66
Moray	3,201	1,715	1,105	381	3,137	1,661	1,199	277	64	54	-94	104
North Ayrshire	3,579	2,499	873	207	3,577	2,449	849	279	2	50	24	-72
North Lanarkshire	6,568	4,768	1,200	600	6,757	4,950	1,251	556	-189	-182	-51	44
Orkney Islands	662	345	255	62	580	335	191	54	82	10	64	8
Perth & Kinross	6,493	3,452	1,494	1,547	4,739	3,138	1,116	485	1,754	314	378	1,062
Renfrewshire	4,705	3,302	729	674	4,394	3,171	838	385	311	131	-109	289
Scottish Borders	4,113	2,207	1,549	357	3,727	2,070	1,324	333	386	137	225	24
Shetland Islands	707	382	228	97	651	372	215	64	56	10	13	33
South Ayrshire	3,484	2,309	877	298	3,045	2,096	684	265	439	213	193	33
South Lanarkshire	7,609	5,631	1,438	540	7,090	5,138	1,415	537	519	493	23	3
Stirling	5,164	2,851	1,014	1,299	4,252	2,981	866	405	912	-130	148	894
West Dunbartonshire	2,086	1,531	413	142	2,281	1,721	432	128	-195	-190	-19	14
West Lothian	4,804	3,077	888	839	4,720	3,453	938	329	84	-376	-50	510
NHS Board areas												
Ayrshire & Arran	7,836	4,713	2,507	616	7,499	4,452	2,308	739	337	261	199	-123
Borders	4,113	2,207	1,549	357	3,727	2,070	1,324	333	386	137	225	24
Dumfries & Galloway	4,029	1,652	2,034	343	3,830	1,739	1,680	411	199	-87	354	-68
Fife	11,305	5,850	3,258	2,197	9,493	5,406	3,053	1,034	1,812	444	205	1,163
Forth Valley	9,458	5,505	2,071	1,882	7,652	5,013	1,858	781	1,806	492	213	1,101
Grampian	18,860	6,793	5,254	6,813	14,696	6,991	5,537	2,168	4,164	-198	-283	4,645
Greater Glasgow & Clyde ⁴	33,384	14,019	8,171	11,194	28,163	15,065	8,936	4,162	5,221	-1,046	-765	7,032
Highland	11,114	5,712	4,066	1,336	10,136	6,008	3,186	942	978	-296	880	394
Lanarkshire	10,495	7,125	2,354	1,016	10,352	6,994	2,355	1,003	143	131	-1	13
Lothian	33,558	11,296	10,128	12,134	24,944	11,423	9,774	3,747	8,614	-127	354	8,387
Orkney	662	345	255	62	580	335	191	54	82	10	64	8
Shetland	707	382	228	97	651	372	215	64	56	10	13	33
Tayside	14,340	6,720	3,424	4,196	11,187	6,416	3,373	1,398	3,153	304	51	2,798
Western Isles	911	574	280	57	904	609	231	64	7	-35	49	-7

Footnotes

- 1) The number of moves between Scotland and the rest of the UK shown here differ from those quoted elsewhere. This is because movements to/from the armed forces are included in these figures but are excluded from the others.
- 2) The total in- and out-migration figures for Scotland equal the sum of migration from / to the rest of the UK and overseas. However, they do not equal the sum of moves for individual Council or NHS Board areas. Migration for individual Council and NHS Board areas includes people moving within Scotland. Since such moves do not involve anyone leaving or entering Scotland, they are not counted in the Scotland totals.
- 3) Figures in this column have not been rounded and so may differ slightly from those in table 4.
- 4) Includes asylum seekers

Table 6: Components of population change by administrative area, mid-2001 to mid-2011

	Estimated	Births	Deaths	Natural	Estimated ¹	Other ²	Estimated	Population change	
	population 30 June 2001				net civilian migration		changes	population 30 June 2011	Number
Scotland	5,064,200	558,827	558,402	425	191,983	-1,808	5,254,800	190,600	3.8
Council areas									
Aberdeen City	211,910	22,960	21,239	1,721	6,763	26	220,420	8,510	4.0
Aberdeenshire	226,940	25,669	21,601	4,068	17,022	-430	247,600	20,660	9.1
Angus	108,370	11,102	12,881	-1,779	4,505	-466	110,630	2,260	2.1
Argyll & Bute	91,300	7,732	11,161	-3,429	2,607	-888	89,590	-1,710	-1.9
Clackmannanshire	48,070	5,576	5,019	557	1,855	288	50,770	2,700	5.6
Dumfries & Galloway	147,780	14,241	18,298	-4,057	4,297	40	148,060	280	0.2
Dundee City	145,460	16,244	17,320	-1,076	1,186	0	145,570	110	0.1
East Ayrshire	120,310	12,838	13,951	-1,113	884	119	120,200	-110	-0.1
East Dunbartonshire	108,250	9,318	9,732	-414	-3,072	-194	104,570	-3,680	-3.4
East Lothian	90,180	10,412	10,187	225	7,765	0	98,170	7,990	8.9
East Renfrewshire	89,410	8,851	8,581	270	170	0	89,850	440	0.5
Edinburgh, City of	449,020	49,846	43,643	6,203	40,100	37	495,360	46,340	10.3
Eilean Siar	26,450	2,410	3,694	-1,284	913	1	26,080	-370	-1.4
Falkirk	145,270	17,565	15,994	1,571	7,491	48	154,380	9,110	6.3
Fife	349,770	39,451	38,297	1,154	16,507	-61	367,370	17,600	5.0
Glasgow City	578,710	69,676	70,447	-771	20,781	110	598,830	20,120	3.5
Highland	208,920	22,494	23,520	-1,026	14,629	-153	222,370	13,450	6.4
Inverclyde	84,150	8,389	10,464	-2,075	-2,867	12	79,220	-4,930	-5.9
Midlothian	80,950	9,071	8,192	879	88	453	82,370	1,420	1.8
Moray	87,000	9,115	9,430	-315	2,167	-1,592	87,260	260	0.3
North Ayrshire	135,820	14,409	16,038	-1,629	939	0	135,130	-690	-0.5
North Lanarkshire	321,180	39,336	34,414	4,922	429	149	326,680	5,500	1.7
Orkney Islands	19,220	1,898	2,196	-298	1,238	0	20,160	940	4.9
Perth & Kinross	134,950	13,570	15,701	-2,131	16,574	127	149,520	14,570	10.8
Renfrewshire	172,850	18,706	19,756	-1,050	-1,150	0	170,650	-2,200	-1.3
Scottish Borders	106,950	11,030	13,067	-2,037	8,237	0	113,150	6,200	5.8
Shetland Islands	21,960	2,497	2,109	388	183	-31	22,500	540	2.5
South Ayrshire	112,160	10,241	14,184	-3,943	3,467	-124	111,560	-600	-0.5
South Lanarkshire	302,340	33,729	33,159	570	9,750	0	312,660	10,320	3.4
Stirling	86,200	8,665	8,610	55	4,388	127	90,770	4,570	5.3
West Dunbartonshire	93,320	10,320	11,193	-873	-2,087	0	90,360	-2,960	-3.2
West Lothian	159,030	21,466	14,324	7,142	6,224	594	172,990	13,960	8.8
NHS Board areas									
Ayrshire & Arran	368,290	37,488	44,173	-6,685	5,290	-5	366,890	-1,400	-0.4
Borders	106,950	11,027	13,065	-2,038	8,238	0	113,150	6,200	5.8
Dumfries & Galloway	147,780	14,241	18,298	-4,057	4,297	40	148,060	280	0.2
Fife	349,690	39,451	38,297	1,154	16,509	-61	367,292	17,602	5.0
Forth Valley	279,240	31,800	29,691	2,109	13,729	463	295,541	16,301	5.8
Grampian	525,850	57,744	52,270	5,474	25,952	-1,996	555,280	29,430	5.6
Greater Glasgow & Clyde	1,197,570	134,278	138,174	-3,896	16,652	-72	1,210,254	12,684	1.1
Highland	300,220	30,226	34,681	-4,455	17,236	-1,041	311,960	11,740	3.9
Lanarkshire	553,230	64,102	59,592	4,510	5,296	149	563,185	9,955	1.8
Lothian	779,000	90,762	76,351	14,411	54,232	1,084	848,727	69,727	9.0
Orkney	19,220	1,898	2,196	-298	1,238	0	20,160	940	4.9
Shetland	21,960	2,497	2,109	388	183	-31	22,500	540	2.5
Tayside	388,750	40,903	45,811	-4,908	22,218	-339	405,721	16,971	4.4
Western Isles	26,450	2,410	3,694	-1,284	913	1	26,080	-370	-1.4

Footnotes

1) Includes movements to/from armed forces.

2) Includes changes in the number of armed forces stationed in Scotland.

Table 7: Age and sex structure of administrative areas, mid-2011

	Persons				Males				Females				Sex Ratio ³
	Median age	% under 16	% working age ¹	% pensionable age ²	Median age	% under 16	% working age ¹	% pensionable age ²	Median age	% under 16	% working age ¹	% pensionable age ²	
Scotland	41	17	63	20	39	18	67	15	42	16	59	24	0.94
Council areas													
Aberdeen City	37	16	67	17	35	16	71	13	38	15	63	22	0.98
Aberdeenshire	42	19	62	20	42	20	65	15	43	18	58	24	0.99
Angus	45	18	58	24	44	18	63	19	46	17	54	29	0.94
Argyll & Bute	46	16	59	26	44	16	64	20	48	15	53	31	0.99
Clackmannanshire	42	19	62	20	40	19	66	15	43	18	58	24	0.96
Dumfries & Galloway	46	16	57	26	46	17	62	21	47	16	54	31	0.94
Dundee City	38	17	63	20	35	18	67	16	40	15	60	24	0.91
East Ayrshire	42	17	62	21	41	19	65	16	43	16	58	26	0.94
East Dunbartonshire	44	18	60	22	42	19	64	17	46	16	56	27	0.93
East Lothian	43	19	60	21	41	20	63	17	43	18	56	25	0.92
East Renfrewshire	43	20	59	21	41	21	63	16	44	18	56	26	0.92
Edinburgh, City of	35	15	69	16	34	16	72	12	36	14	65	21	0.94
Eilean Siar	46	17	58	25	45	17	64	19	47	16	53	31	0.97
Falkirk	41	18	62	19	40	19	66	15	42	17	59	24	0.94
Fife	41	18	61	21	40	19	65	16	43	17	58	25	0.93
Glasgow City	35	16	68	15	34	17	72	11	37	16	65	20	0.94
Highland	44	18	60	22	43	18	64	17	45	17	56	27	0.96
Inverclyde	43	17	61	21	41	19	65	16	44	16	58	27	0.91
Midlothian	41	19	61	20	40	20	64	16	43	18	58	24	0.91
Moray	43	17	60	23	42	18	65	17	45	17	55	28	1.01
North Ayrshire	43	18	60	22	42	19	64	17	44	17	56	27	0.90
North Lanarkshire	40	19	63	18	38	21	66	13	41	18	59	22	0.93
Orkney Islands	45	17	60	23	44	18	64	19	45	16	56	28	0.98
Perth & Kinross	43	17	60	23	42	17	65	18	45	16	56	28	0.97
Renfrewshire	42	18	63	20	40	19	66	15	43	17	59	24	0.92
Scottish Borders	45	17	58	24	44	18	63	19	46	17	55	29	0.94
Shetland Islands	42	19	61	20	41	19	65	16	43	19	57	25	1.03
South Ayrshire	45	16	59	25	44	17	63	19	47	15	55	30	0.92
South Lanarkshire	42	18	62	20	40	19	66	15	43	17	58	24	0.92
Stirling	41	18	62	20	40	19	65	16	41	17	59	24	0.91
West Dunbartonshire	41	18	63	20	39	19	67	14	43	17	59	24	0.91
West Lothian	39	20	63	17	38	21	66	13	40	19	60	21	0.96
NHS Board areas													
Ayrshire & Arran	44	17	60	23	42	18	64	18	45	16	56	28	0.92
Borders	45	17	58	24	44	18	63	19	46	17	55	29	0.94
Dumfries & Galloway	46	16	57	26	46	17	62	21	47	16	54	31	0.94
Fife	41	18	61	21	40	19	65	16	43	17	58	25	0.93
Forth Valley	41	18	62	20	40	19	66	15	42	17	59	24	0.94
Grampian	40	17	64	19	39	18	67	15	42	17	60	24	0.99
Greater Glasgow & Clyde	39	17	65	18	36	18	69	13	41	16	61	23	0.93
Highland	45	17	60	23	43	18	64	18	46	16	55	28	0.97
Lanarkshire	41	19	62	19	39	20	66	14	42	18	59	23	0.93
Lothian	38	17	66	17	36	18	69	13	39	16	63	21	0.94
Orkney	45	17	60	23	44	18	64	19	45	16	56	28	0.98
Shetland	42	19	61	20	41	19	65	16	43	19	57	25	1.03
Tayside	42	17	61	22	40	18	65	17	44	16	57	27	0.94
Western Isles	46	17	58	25	45	17	64	19	47	16	53	31	0.97

Footnotes

- 1) Working age at 30 June 2011 is defined as men aged 16 to 64 and women aged 16 to approximately 60 years and 237 days
- 2) Pensionable age at 30 June 2011 was 65 for men and approximately 60 years and 238 days for women.
- 3) The sex ratio is the male population divided by the female population.

Table 8: Rest of UK / Overseas moves and total resident population of Scotland by age group, mid-2010 to mid-2011

Movements between Scotland and the rest of the UK ¹																				
	0-15		16-24		25-34		35-44		45-54		55-64		65-74		75-84		85+		All ages	
	N	%	N	%	N	%	N	%	N	%	N	%	N	%	N	%	N	%	N	%
IN	6,069	14	10,839	25	10,476	24	6,437	15	4,384	10	3,044	7	1,400	3	598	1	439	1	43,686	100
OUT	6,054	15	9,282	23	11,837	29	5,875	14	3,421	8	2,261	6	1,170	3	541	1	336	1	40,777	100
NET	15		1,557		-1,361		562		963		783		230		57		103		2,909	

Movements between Scotland and Overseas (including asylum seekers) ²																				
	0-15		16-24		25-34		35-44		45-54		55-64		65-74		75-84		85+		All ages	
	N	%	N	%	N	%	N	%	N	%	N	%	N	%	N	%	N	%	N	%
IN	5,653	13	16,385	39	13,458	32	3,882	9	1,594	4	794	2	376	1	117	0	41	0	42,300	100
OUT	2,470	15	3,897	23	5,017	30	2,495	15	1,390	8	884	5	440	3	187	1	120	1	16,900	100
NET	3,183		12,488		8,441		1,387		204		-90		-64		-70		-79		25,400	

Total net migration (including asylum seekers and rounding) ³																				
NET	0-15		16-24		25-34		35-44		45-54		55-64		65-74		75-84		85+		All ages	
	N	%	N	%	N	%	N	%	N	%	N	%	N	%	N	%	N	%	N	%
NET	3,253		13,665		6,485		1,520		1,104		744		188		-7		27		26,979	

Age distribution of the mid-2011 resident population of Scotland																				
Total	0-15		16-24		25-34		35-44		45-54		55-64		65-74		75-84		85+		All ages	
	N	%	N	%	N	%	N	%	N	%	N	%	N	%	N	%	N	%	N	%
Total	913,317	17	625,592	12	680,533	13	706,354	13	776,583	15	660,034	13	479,313	9	302,844	6	110,230	2	5,254,800	100

Footnotes

1) National Health Service Central Register (NHSCR) patient movements mid-2010 to mid-2011

2) Totals are based primarily on International Passenger Survey (IPS) data. However, the sample size in Scotland is too small to give an age breakdown so an age distribution is assumed using NHSCR data.

3) Note that the movements between Scotland and the rest of the UK and overseas will not sum to the total net migration as they exclude movements to and from the armed forces and rounding adjustments.

Table 9: Land area and population density by administrative area, mid-2011

	Estimated population 30 June 2011	Area ¹ (sq km)	Density ² (Persons per sq km)
Scotland	5,254,800	77,925	67
Council areas			
Aberdeen City	220,420	186	1,187
Aberdeenshire	247,600	6,313	39
Angus	110,630	2,182	51
Argyll & Bute	89,590	6,909	13
Clackmannanshire	50,770	159	320
Dumfries & Galloway	148,060	6,426	23
Dundee City	145,570	60	2,433
East Ayrshire	120,200	1,262	95
East Dunbartonshire	104,570	175	599
East Lothian	98,170	679	145
East Renfrewshire	89,850	174	517
Edinburgh, City of	495,360	264	1,878
Eilean Siar	26,080	3,071	8
Falkirk	154,380	297	519
Fife	367,370	1,325	277
Glasgow City	598,830	175	3,412
Highland	222,370	25,659	9
Inverclyde	79,220	160	494
Midlothian	82,370	354	233
Moray	87,260	2,238	39
North Ayrshire	135,130	885	153
North Lanarkshire	326,680	470	695
Orkney Islands	20,160	990	20
Perth & Kinross	149,520	5,286	28
Renfrewshire	170,650	261	654
Scottish Borders	113,150	4,732	24
Shetland Islands	22,500	1,466	15
South Ayrshire	111,560	1,222	91
South Lanarkshire	312,660	1,772	176
Stirling	90,770	2,187	41
West Dunbartonshire	90,360	159	569
West Lothian	172,990	427	405
NHS Board areas			
Ayrshire & Arran	366,890	3,377	109
Borders	113,150	4,732	24
Dumfries & Galloway	148,060	6,426	23
Fife	367,292	1,325	277
Forth Valley	295,541	2,633	112
Grampian	555,280	8,736	64
Greater Glasgow & Clyde	1,210,254	1,151	1,052
Highland	311,960	32,568	10
Lanarkshire	563,185	2,181	258
Lothian	848,727	1,760	482
Orkney	20,160	990	20
Shetland	22,500	1,466	15
Tayside	405,721	7,508	54
Western Isles	26,080	3,071	8

Footnotes

1) Land areas were derived from digital boundaries used for the 2011 Census. Figures may not add exactly because of rounding.

2) Persons per sq km has been calculated using actual, not rounded areas.

5. Notes and definitions

Population covered

The estimated population of an area includes all those usually resident there, whatever their nationality. Students are treated as being resident at their term-time address. Members of UK and non-UK armed forces stationed in Scotland are included; UK forces stationed outside Scotland are excluded. Short-term international migrants, who stay for less than 12 months, are excluded.

Age

Population figures relate to 30 June of the year shown and ages relate to age at last birthday.

Presentation of estimates

Although the populations are tabulated in units, this does not imply accuracy to that level. The data are presented in units for the convenience of users wishing to compile non-standard aggregations without encountering rounding problems.

Administrative areas

The composition of the NHS Board areas in terms of Council areas is summarised in the table below. From 1 April 2006 responsibility for NHS Argyll & Clyde was split between NHS Greater Glasgow (now known as Greater Glasgow & Clyde) and NHS Highland. The tables presented in this report show information for the new NHS Board areas for all years.

Composition of NHS Board areas

NHS Board area	Council area
Ayrshire & Arran	East Ayrshire, North Ayrshire, South Ayrshire
Borders	Scottish Borders
Dumfries & Galloway	Dumfries & Galloway
Fife	Fife
Forth Valley	Clackmannanshire, Falkirk (part), Stirling (part), Perth & Kinross (part)
Grampian	Aberdeen City, Aberdeenshire, Moray
Greater Glasgow & Clyde ¹	East Dunbartonshire, East Renfrewshire, Glasgow City, Inverclyde, North Lanarkshire (part), Renfrewshire, South Lanarkshire (part), Stirling (part), West Dunbartonshire
Highland ¹	Highland, Argyll & Bute
Lanarkshire	North Lanarkshire (part), South Lanarkshire (part), West Lothian (part), Falkirk (part)
Lothian	East Lothian, City of Edinburgh, Midlothian, West Lothian (part), Falkirk (part)
Orkney	Orkney Islands
Shetland	Shetland Islands
Tayside	Angus, Dundee City, Perth & Kinross (part)
Western Isles	Eilean Siar

¹ New NHS Board areas including parts of former Argyll & Clyde.

Note: In practice there are some other very small 'slivers' where NHS Board and Council area boundaries cross.

Land area

The land areas used to calculate the population density information presented in [Table 9](#) were derived from digital boundaries used for the 2001 Census.

Methodology and comparisons across the UK

The National Records of Scotland (NRS) website has a guide that describes the [methodology](#) used to produce the mid-year population estimates for Scotland. This methodology is similar to that used to produce population estimates in other UK countries. A [comparison of data sources and methods](#) used for population estimates across the UK is available from the Office for National Statistics (ONS) website.

Sources of migration data

Migration is the most difficult component of population change to estimate, as there is no comprehensive system which registers migration in the UK, either moves to or from the rest of the world, or moves within the UK. Estimates of migration have therefore to be based on survey data and the best proxy data that exist.

Migration estimates are derived from the following key sources of data. The National Health Service Central Register (NHSCR) is used to calculate moves between NHS Board areas within the UK, with migration at Council area and below estimated using anonymised data from the Community Health Index (CHI) supplied with the permission of the Scottish Directors of Public Health. The International Passenger Survey (IPS) provides information on moves into and out of Scotland with an origin or destination of outside the UK. In addition to IPS data, additional information is used for asylum seekers. These three main sources are described in more detail in the remainder of this section.

More information on the [methodology used to estimate migration](#) can be found in the migration section of the NRS website and in the [Mid-Year Population Estimates for Scotland Methodology Guide](#).

Internal migration within the UK

The NHSCR system records the movements of patients between NHS Board areas in the UK. Each time a patient transfers to a new NHS doctor in a different NHS Board area, the NHSCR is notified and the patient is then considered to have made a migrant move. Counts of these re-registrations are used as a proxy indicator for moves within the UK.

The CHI holds records of people registered with an NHS doctor in Scotland. The records used in production of the mid-year population estimates contain the postcode of the patient's address, which enables migration to be estimated for Council areas, and for smaller areas. The approach used for estimating Council area-level migration involves matching CHI patient records extracted from a database which reflects the 'live' CHI system on two occasions one year apart.

Currently, migration data derived from the NHSCR is considered to be the most reliable data available at NHS Board level, so estimates from the CHI are controlled to ensure that they are consistent with the NHSCR data for moves across a NHS Board boundary by origin, destination, age and sex.

Due to an improvement in data sources, the accuracy of cross border migration data between Scotland and Northern Ireland was improved from mid-2009. More information on the nature of the improvements is contained in the papers from the May 2010 meeting of the [Population and Migration Statistics Committee \(PAMS\)](#), available on the NRS website. We are reviewing the process for estimating internal migration, including investigating the use of patients' postcode information held on the NHSCR.

International migration

An international migrant is defined by the United Nations (UN) as someone who changes country of residence for 12 months or more. There is no single, all-inclusive system in place to measure all movements of population into and out of the UK. Therefore, it is necessary to use a combination of data from different sources that have different characteristics and attributes in order to produce estimates of international migration. While offering the best data currently available, none of the data sources used is specifically designed to capture information solely on international migration.

Three sources of data are used to compile the national estimates of international migration into Scotland:

- The International Passenger Survey (IPS) is a continuous sample survey conducted by ONS at the principal air, sea and Channel Tunnel routes between the United Kingdom and countries outside the British Isles. It is the prime source of migration data to and from the UK, providing estimates of both inflows and outflows, but does not cover all migration types;
- Home Office (HO), which provides data on asylum seekers and their dependants;
- The Labour Force Survey (LFS), which collects information on where international migrants live.

Fundamental changes were introduced to the IPS sample design at the beginning of 2009 to make the survey more focused on identifying migrants. These changes included a re-organisation of the times and frequency of sampling of travellers, sampling at additional locations including Aberdeen and improvements to the IPS weighting methodology.

Given that the IPS collects information on intentions which may or may not be realised, an adjustment is made to the IPS data for visitor and migrant switchers (people who change their intentions and their migratory status). The Long-Term International Migration (LTIM) estimate (previously referred to as Total International Migration, TIM) is derived by combining these components.

The IPS provides an estimate of international migrants into the United Kingdom. The allocation of these migrants to Scotland is based on the LFS. The LFS provides more reliable data on the geographical distribution of immigrants than the destination provided in the IPS as it is based on where migrants actually live rather than on their initial intentions. The outflow of international migrants from Scotland is based directly on the IPS data. More information on the [LTIM method](#) can be found on the ONS website.

The LTIM estimate for Scotland has been used in the mid-year estimates for Scotland since mid 2007. Previously, a similar method based on the IPS was used, but this did not use the LFS distribution or include estimates of migrant switchers. It did however use an adjustment for unmeasured migration. The results of the 2001 Census indicated that the previously published 2000 mid-year estimates had been overestimated as a result of cumulative errors in estimating migration. To ensure that migration estimates did not continue to be overestimated, an unmeasured migration adjustment was included. The LTIM methodology does not include this adjustment. Rather the assumption is that, since the census and estimates are calculated using different methodologies, differences inevitably arise. An evaluation of the impact of changing method has been carried out. The conclusion was that the previous method estimated a cumulative net migration gain around 9,700 higher than the TIM method between the census and the 2006 estimates. As this is not considered substantial, there are currently no plans to revise the previous mid-year estimates due to this change.

Distribution of international migrants to areas within Scotland

International migration flows to NHS Boards were allocated by using overseas inflows recorded on the NHSCR. However, NHSCR records hold limited data on international outflows from NHS Boards to overseas, as patients rarely de-register with their doctor when moving overseas. As a result international outflows were allocated using averaged proportions based on international inflows, outflows to the rest of the UK and the population size of each NHS Board.

Age and sex distributions of international in-migrants are obtained directly from the NHSCR. The age/sex distribution of moves for international out-migrants was based on the distribution of migrants to the rest of the UK, as recorded by the NHSCR.

The distribution of migrants to Council areas is based on records from the Community Health Index (CHI), which are made consistent with the NHSCR geographic and age/sex distributions. International in-migrants were allocated using records appearing on the CHI extract where the patient had arrived from overseas. Like the NHSCR, the CHI extract holds limited data on people leaving Scotland for overseas and so international out-migrants were allocated using a combination of in-migrants to Scotland from overseas and migrants leaving Scotland for the rest of the UK.

Work to improve the method used to allocate international out-migrants to NHS Board and Council areas is continuing and further improvements will be considered for future publications.

Additional migration data

The NRS website includes a [migration section](#) which provides additional tables showing migration estimates associated with mid-year population estimates.

Research into improving migration and population statistics

Since the early 2000s, and especially since Eastern European countries joined the EU in May 2004, migration has played a larger part in Scotland's demographic change than in the previous decade. So it has become more important to have high quality statistics on migration and the population, for policy development and for planning and providing public services. NRS was part of an inter-departmental effort, led by the Office for National Statistics (ONS), to improve the estimates of migration and migrant populations in the United Kingdom, both nationally and at a local level. The ONS website has more information on the [Migration Statistics Improvement Programme](#) including the programme final report.

Although the programme has now finished, work to improve migration statistics is continuing. In Scotland the key focus will be reconciling the mid-year estimates with the 2011 Census results and rebasing historical estimates. As part of this work we will review our method for estimating migration.

Publication of future population estimates following the 2011 Census

We plan to use the 2011 Census to revise the mid-2011 population estimates and the estimates for previous years. The timings of the publication of the revised estimates and the estimates for mid-2012 have yet to be finalised.

6. Notes on statistical publications

National Statistics

The United Kingdom Statistics Authority (UKSA) has designated these statistics as National Statistics, in accordance with the Statistics and Registration Service Act 2007 and signifying compliance with the Code of Practice for Official Statistics (available on the [UKSA](#) website).

Designation can be broadly interpreted to mean that the statistics:

- meet identified user needs;
- are well explained and readily accessible;
- are produced according to sound methods, and
- are managed impartially and objectively in the public interest.

Once statistics have been designated as National Statistics it is a statutory requirement that the Code of Practice shall continue to be observed.

National Records of Scotland

From 1 April 2011, the General Register Office for Scotland (GROS) merged with the National Archives of Scotland to become the National Records of Scotland (NRS). The [GROS website](#) will remain active until it is replaced by a new website for NRS.

We, the National Records of Scotland, are a non-ministerial department of the devolved Scottish Administration. Our aim is to provide relevant and reliable information, analysis and advice that meets the needs of government, business and the people of Scotland. We do this as follows:

- Preserving the past – We look after Scotland’s national archives so that they are available for current and future generations, and we make available important information for family history.
- Recording the present – At our network of local offices, we register births, marriages, civil partnerships, deaths, divorces and adoptions in Scotland.
- Informing the future – We are responsible for the Census of Population in Scotland which we use, with other sources of information, to produce statistics on the population and households.

You can get other detailed statistics that we have produced from the [Statistics](#) section on the NRS/GROS website. Statistics from the 2001 Census are available from [Scotland’s Census Results On-Line \(SCROL\)](#) website and the [Census](#) section of the NRS/GROS website.

We also provide information about [future publications](#) on our website. If you would like us to tell you about future statistical publications, you can register your interest on the Scottish Government [ScotStat](#) website.

Enquiries and suggestions

Please contact our Customer Services if you need any further information.

Email: customer@gro-scotland.gsi.gov.uk

If you have comments or suggestions that would help us improve our outputs or our standards of service, please contact:

Kirsty MacLachlan
Senior Statistician
National Records of Scotland
Room 1/2/3
Ladywell House
Ladywell Road
Edinburgh
EH12 7TF.
Phone: 0131 314 4242
Email: kirsty.maclachlan@gro-scotland.gsi.gov.uk

7. Related organisations

Organisation	Contact
<p>The Scottish Government (SG) forms the bulk of the devolved Scottish Administration. The aim of the statistical service in the SG is to provide relevant and reliable statistical information, analysis and advice that meets the needs of government, business and the people of Scotland.</p>	<p>Office of the Chief Statistician Scottish Government 4.N06, St Andrews House Edinburgh EH1 3DG Phone: 0131 244 0442</p> <p>Email: statistics.enquiries@scotland.gsi.gov.uk</p> <p>Website: www.scotland.gov.uk/Topics/Statistics</p>
<p>The Office for National Statistics (ONS) is responsible for producing a wide range of economic and social statistics. It also carries out the Census of Population for England and Wales.</p>	<p>Customer Contact Centre Room 1.015 Office for National Statistics Cardiff Road Newport NP10 8XG Phone: 0845 601 3034 Minicom: 01633 812399</p> <p>Email: info@statistics.gsi.gov.uk</p> <p>Website: www.ons.gov.uk/</p>
<p>The Northern Ireland Statistics and Research Agency (NISRA) is Northern Ireland's official statistics organisation. The agency is also responsible for registering births, marriages, adoptions and deaths in Northern Ireland, and the Census of Population.</p>	<p>Northern Ireland Statistics and Research Agency McAuley House 2-14 Castle Street Belfast BT1 1SA Phone: 028 9034 8100</p> <p>Email: info.nisra@dfpni.gov.uk</p> <p>Website: www.nisra.gov.uk</p>

© Crown Copyright. You may reproduce brief extracts from the material in this publication as long as you fully acknowledge the source.