

Projected Population of Scotland (2008-based)

Figures

Contents

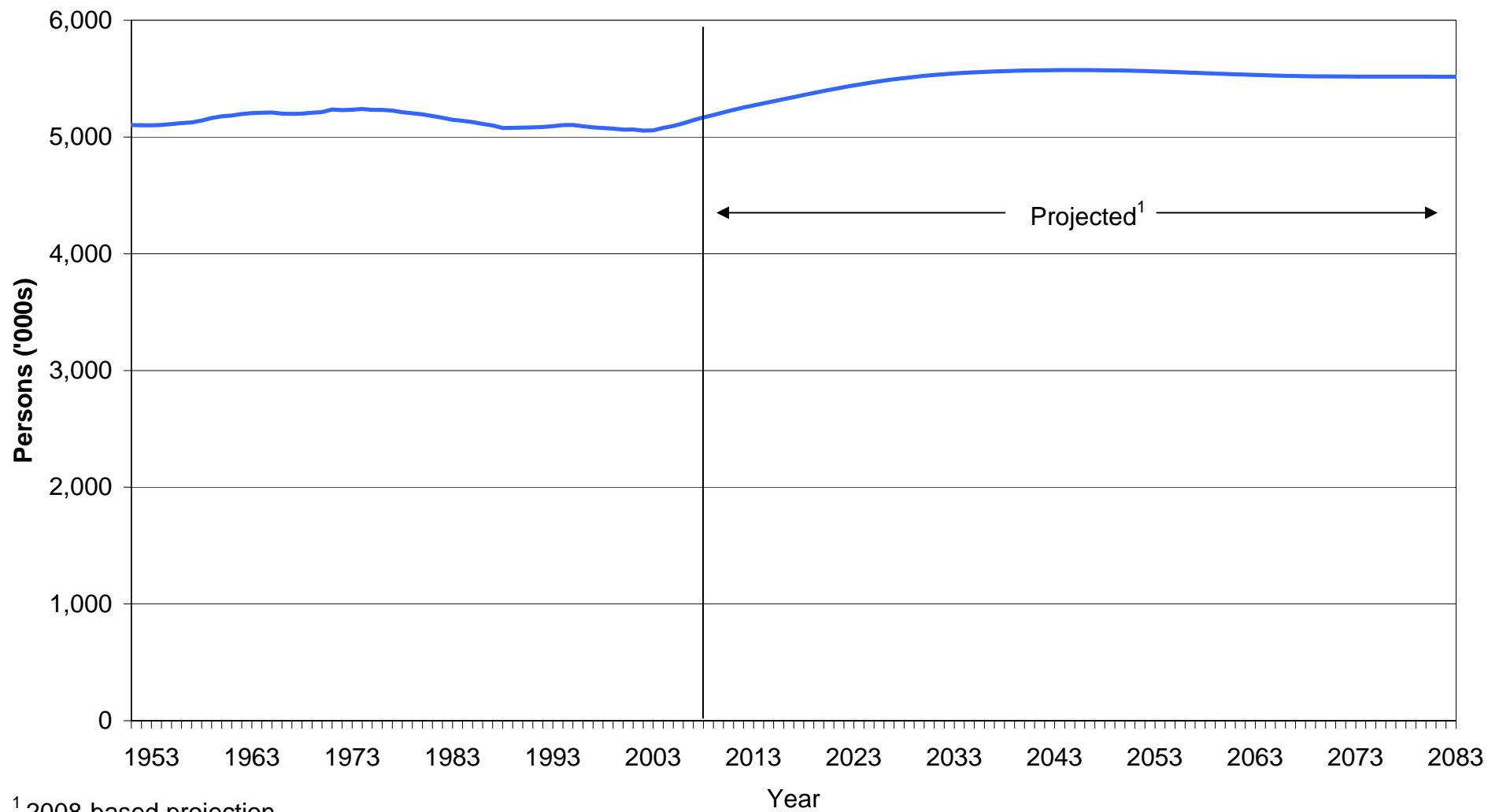
- Figure 1 [Estimated population of Scotland, actual and projected, 1951-2083](#)
- Figure 2 [Births and deaths, actual and projected, Scotland, 1951-2033](#)
- Figure 3 [Estimated and projected net migration, Scotland, 1951-2033](#)
- Figure 4 [The projected percentage change in Scotland's population by age group, 2008-2033](#)
- Figure 5 [Expectation of life at birth, Scotland, 1983-2033](#)
- Figure 6 [Actual and projected total population compared with previous projections, 1983-2033](#)
- Figure 7 [Actual and projected Natural Change \(Births minus Deaths\) compared with previous projections, 1983-2033](#)
- Figure 8 [Actual and projected migration compared with previous projections, 1983-2033](#)
- Figure 9 [Comparison of population change for UK countries, 2008-2033](#)
- Figure 10 [Projected percentage population change in selected European countries, 2008-2033](#)
- Figure 11 [Actual and projected total population of Scotland under the 2008-based principal and projected variant projections, 1983-2083](#)
- Figure 12 [Percentage change in age structure under the 2008-based principal and selected variant projections, 2008-2033](#)
- Figure 13 [Average age of Scotland's population under the 2008-based principal and selected variant projections, 2008-2033](#)
- Figure 14 [Dependency ratios \(dependents per 100 working age population\) under the 2008-based principal and selected variant projections, 2008-2033](#)

- Figure A1 [Scotland Age Specific Fertility, 1983-2008](#)
- Figure B1 [Period expectations of life \(Eol\) for Scotland less respective expectation of life for UK - for males at birth and ages 20, 40, 60 and 80](#)
- Figure B2 [Period expectations of life \(Eol\) for Scotland less respective expectation of life for UK - for females at birth and ages 20, 40, 60 and 80](#)
- Figure C1 [Estimated net migration, Scotland, 1951-2008](#)

This publication is available on the GROS website:

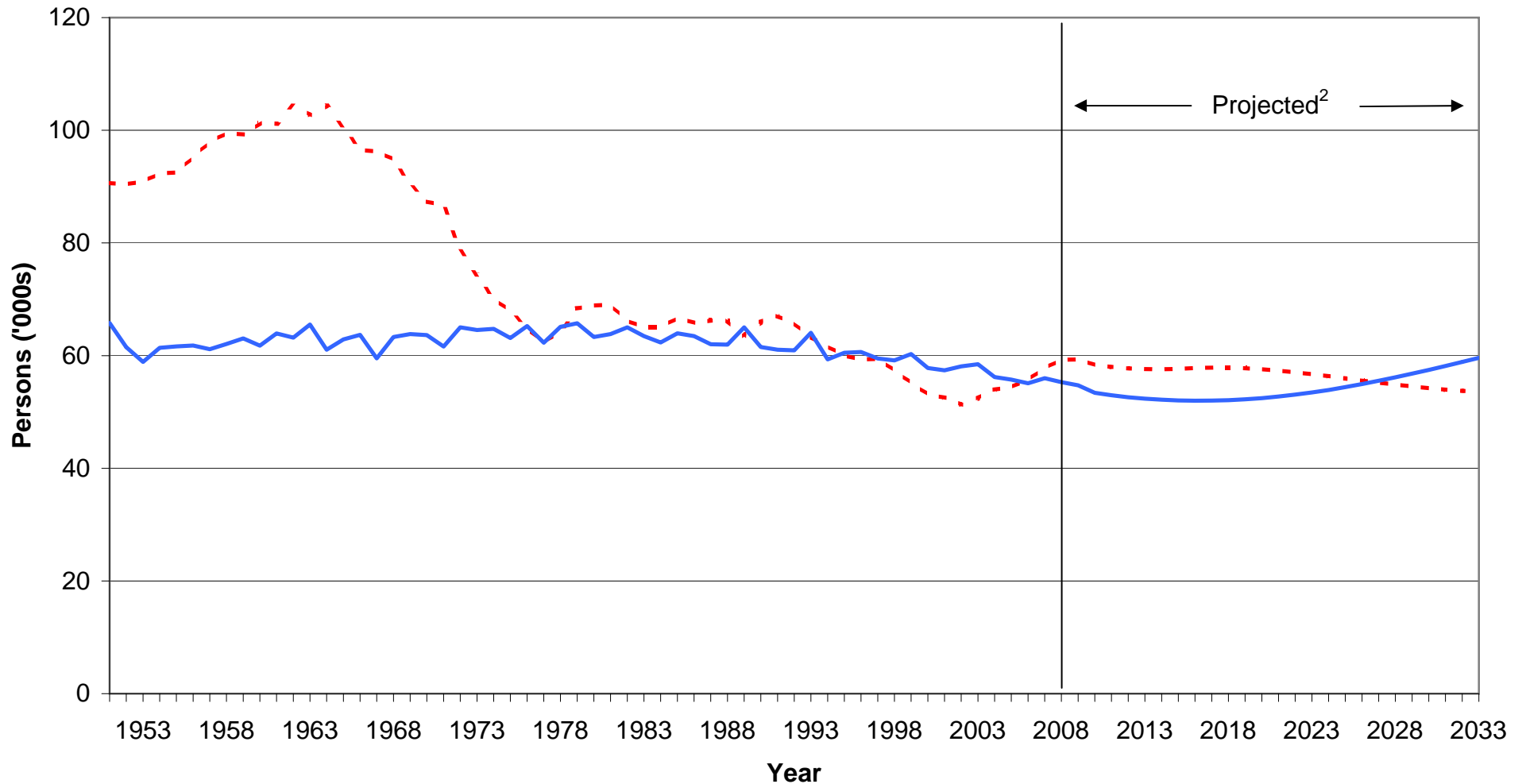
<http://www.gro-scotland.gov.uk/statistics/publications-and-data/popproj/index.html>

Figure 1 Estimated population of Scotland, actual and projected, 1951-2083



¹ 2008-based projection

Figure 2 Births and deaths, actual¹ and projected, Scotland, 1951-2033



¹ calendar year

² 2008-based mid-year projections

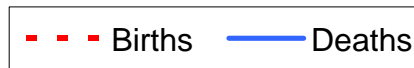
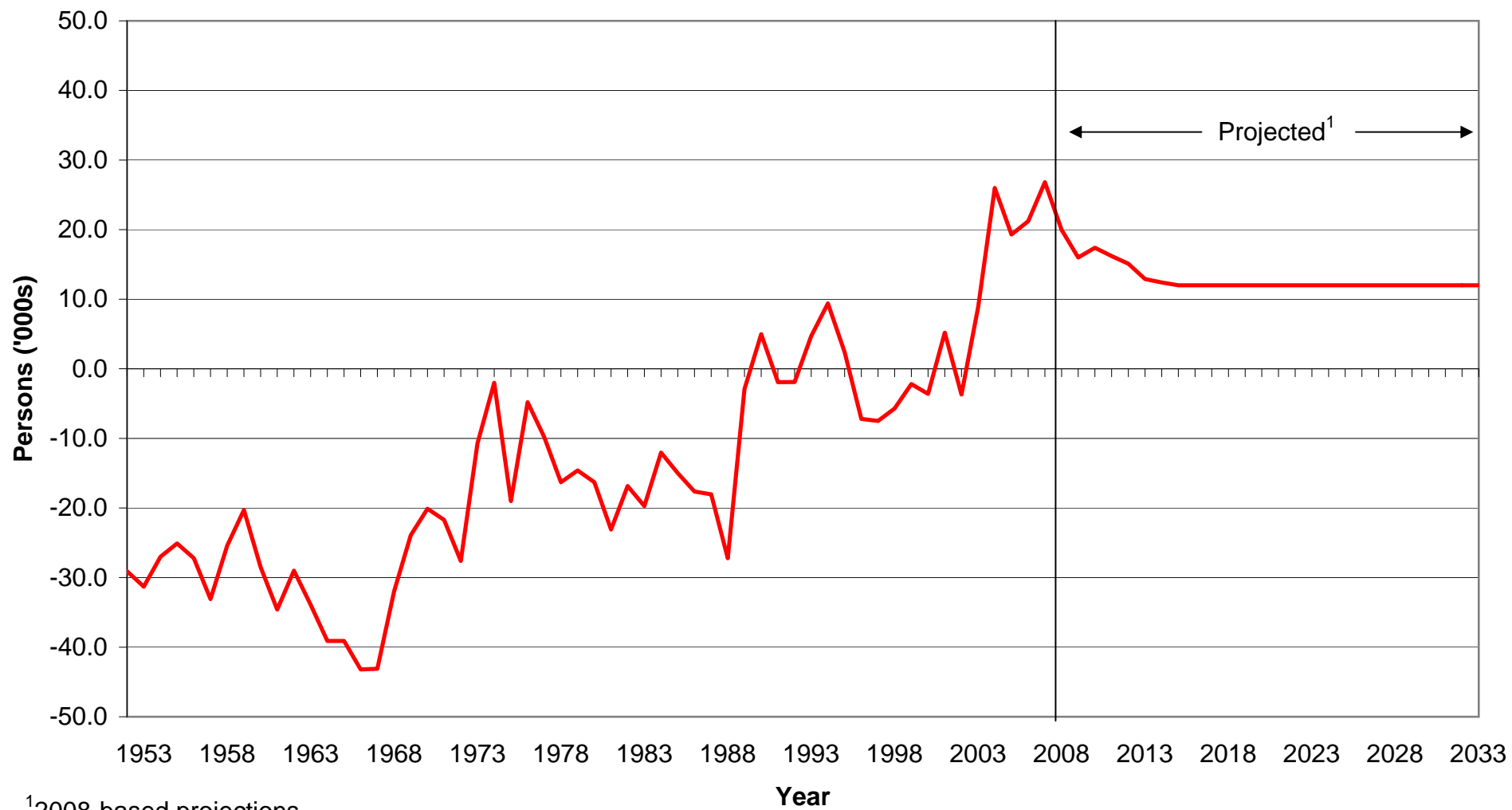


Figure 3 Estimated and projected net migration, Scotland, 1951-2033



¹2008-based projections

Figure 4 The projected percentage change in age structure of Scotland's population, 2008-2033

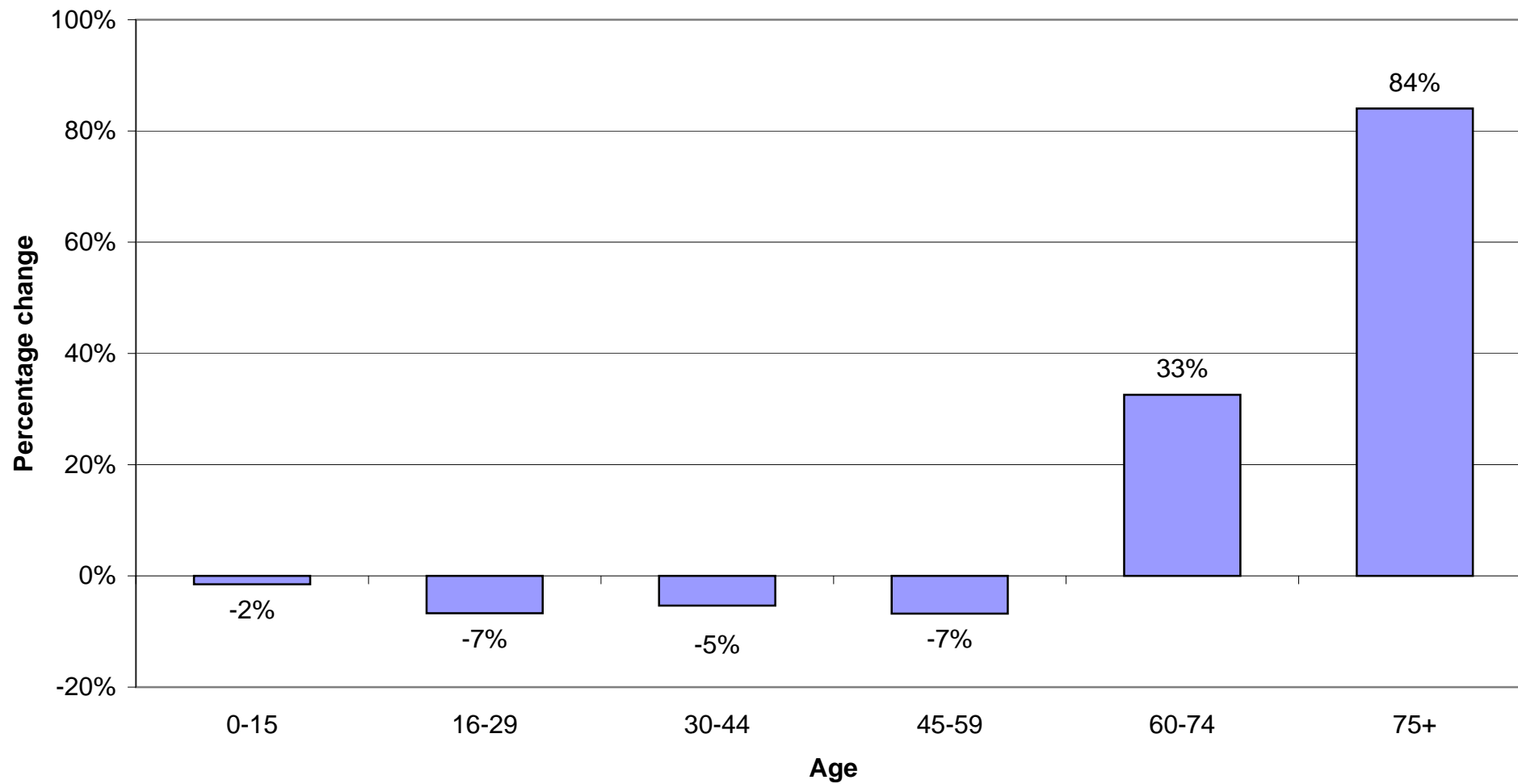
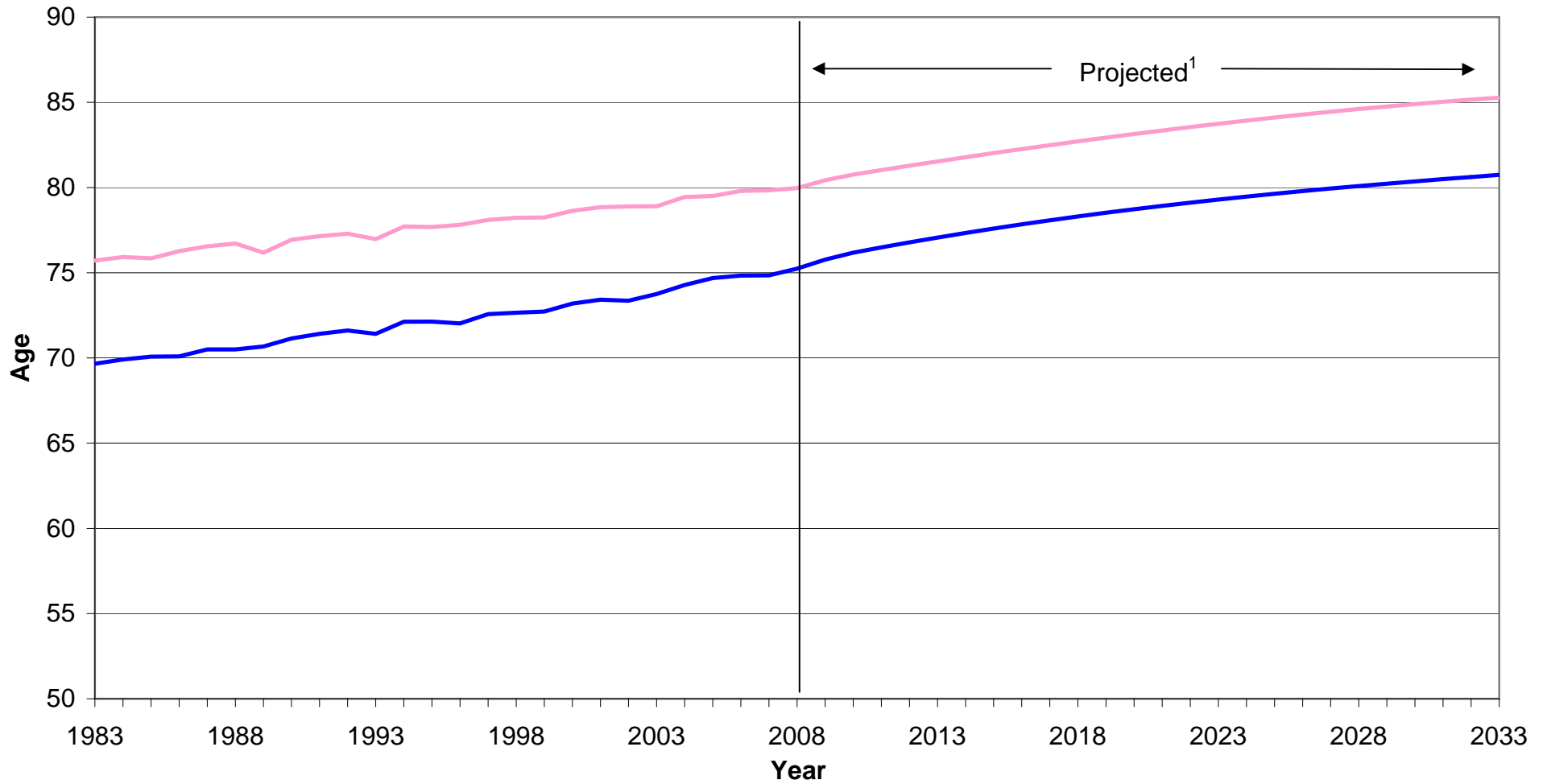


Figure 5 Expectation of life at birth, Scotland, 1981-2033



¹2008-based projections

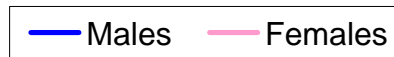


Figure 6 Actual and projected total population compared with previous projections, 1983-2033

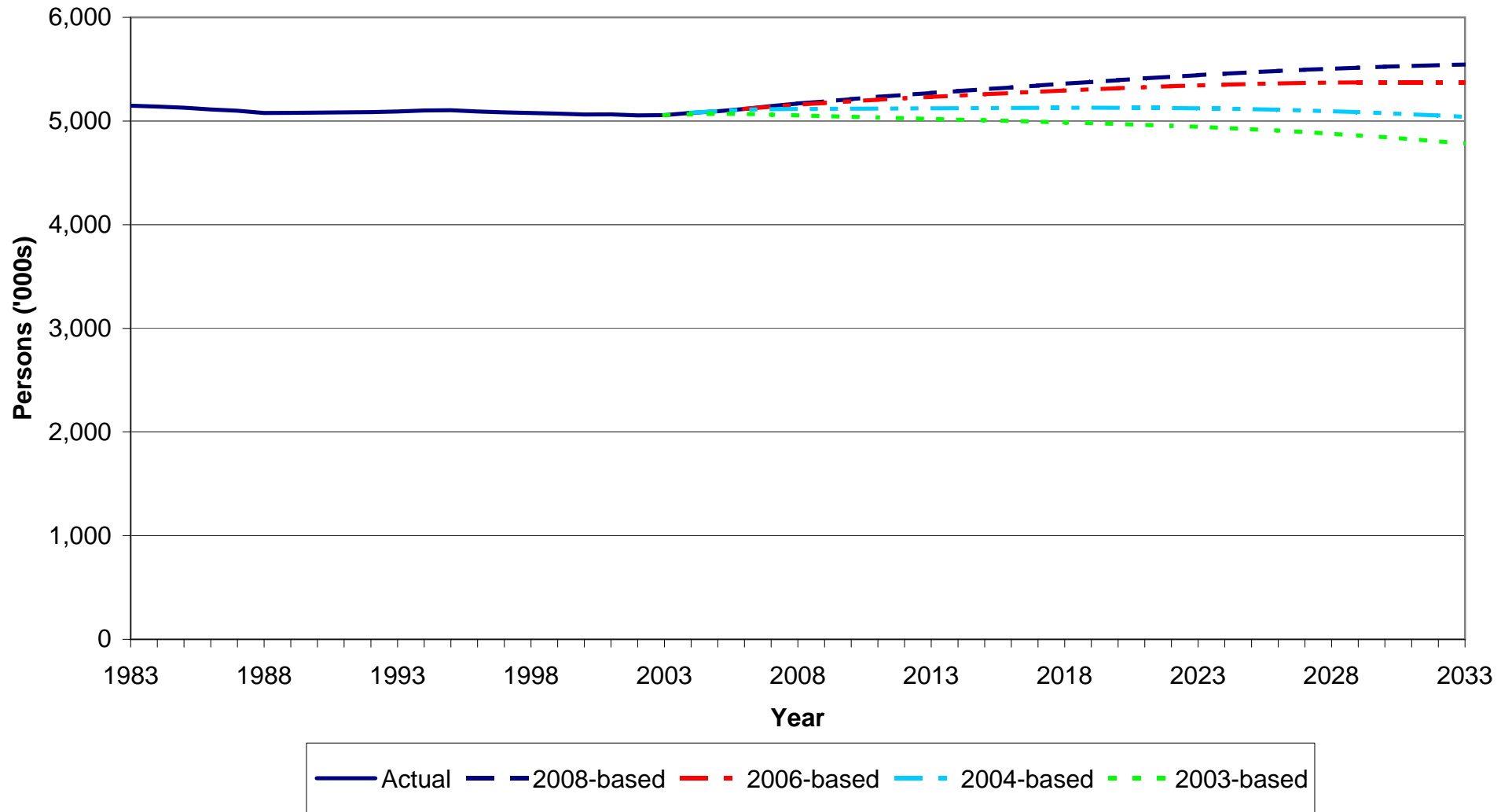


Figure 7 Actual and Projected Natural change (births minus deaths) compared with previous projections, 1983-2033

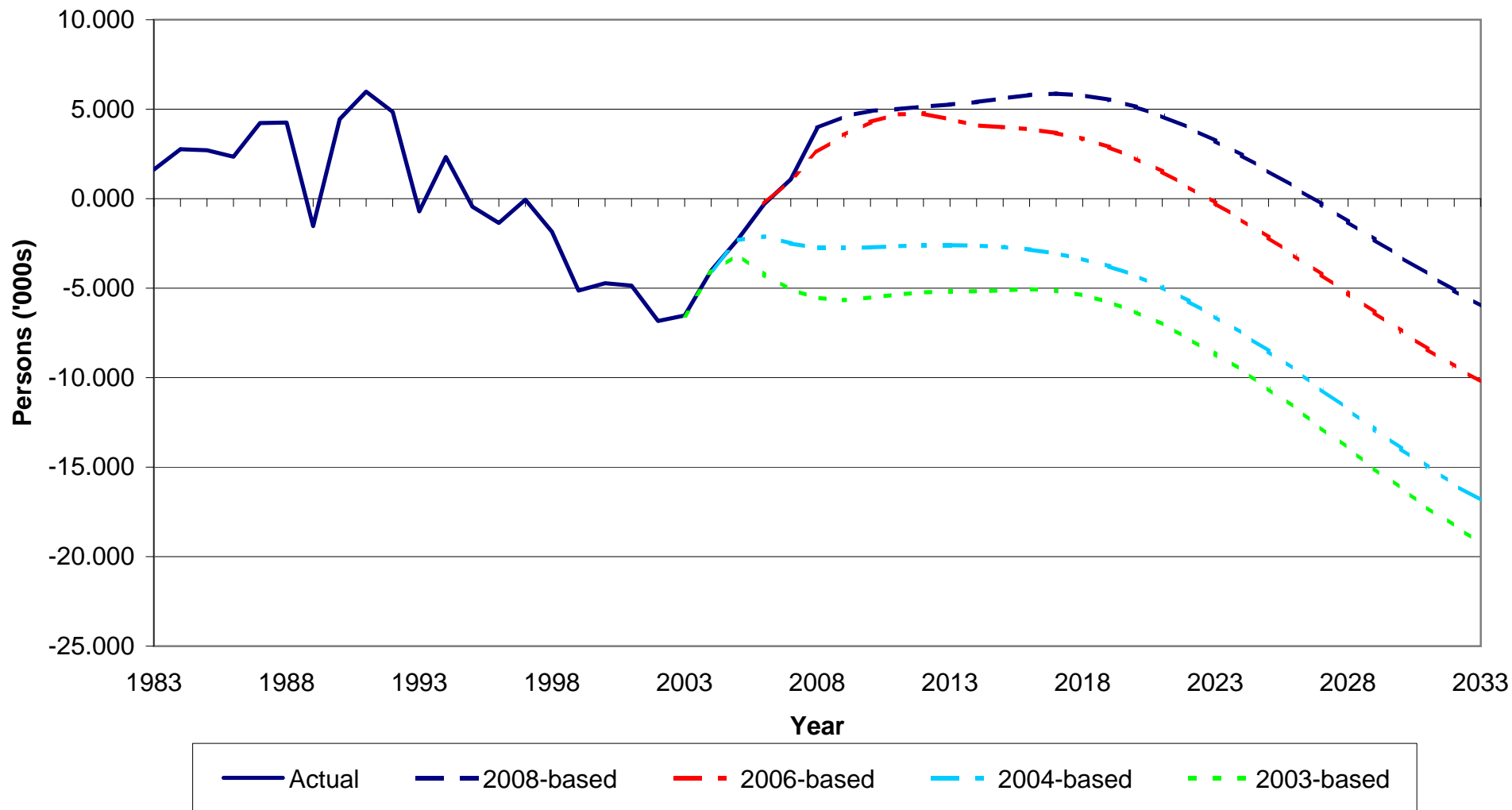


Figure 8 Actual and Projected Migration compared with previous projections, 1983-2033

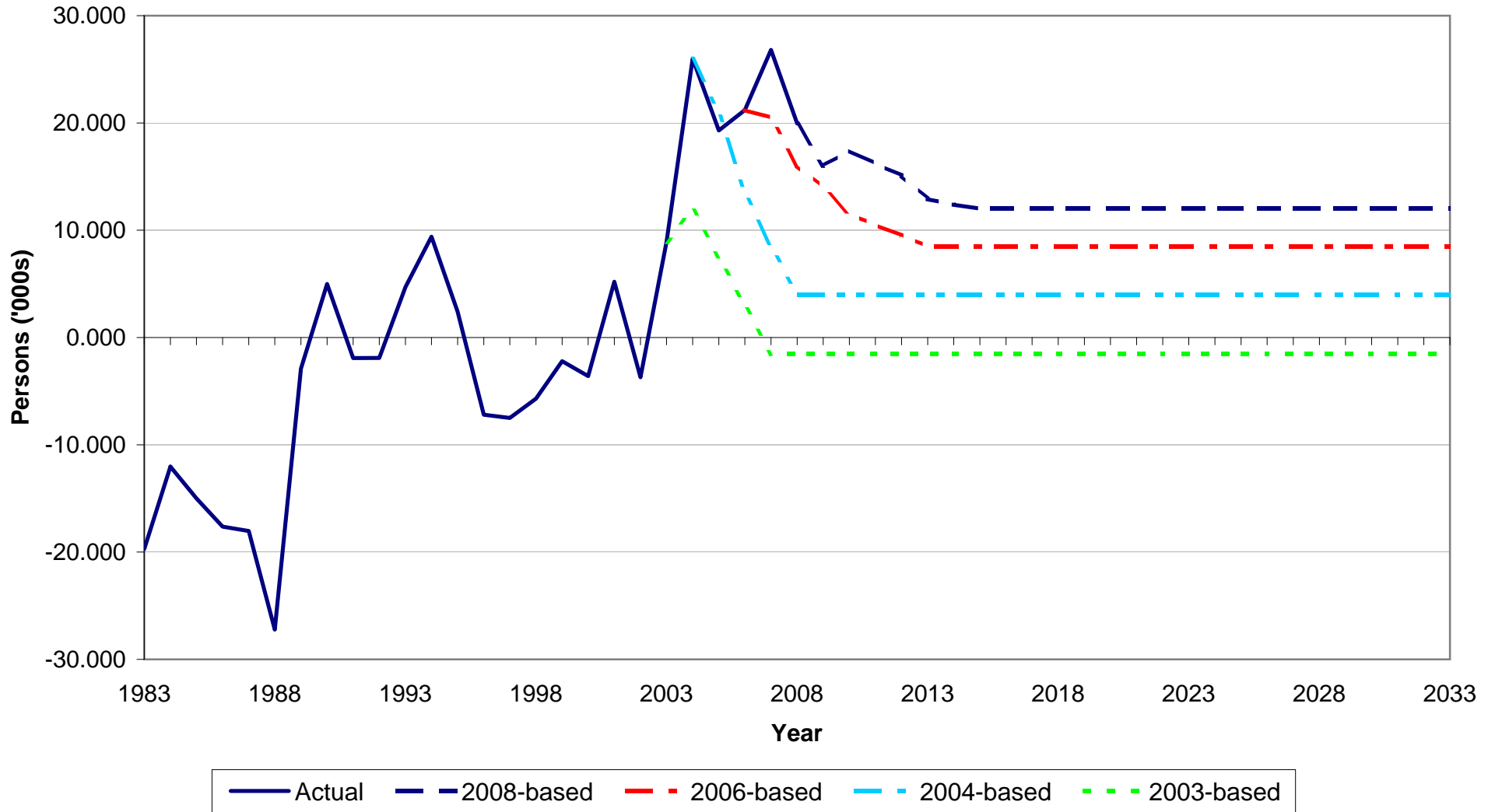


Figure 9 Comparison of population change for UK countries, 2008-2033

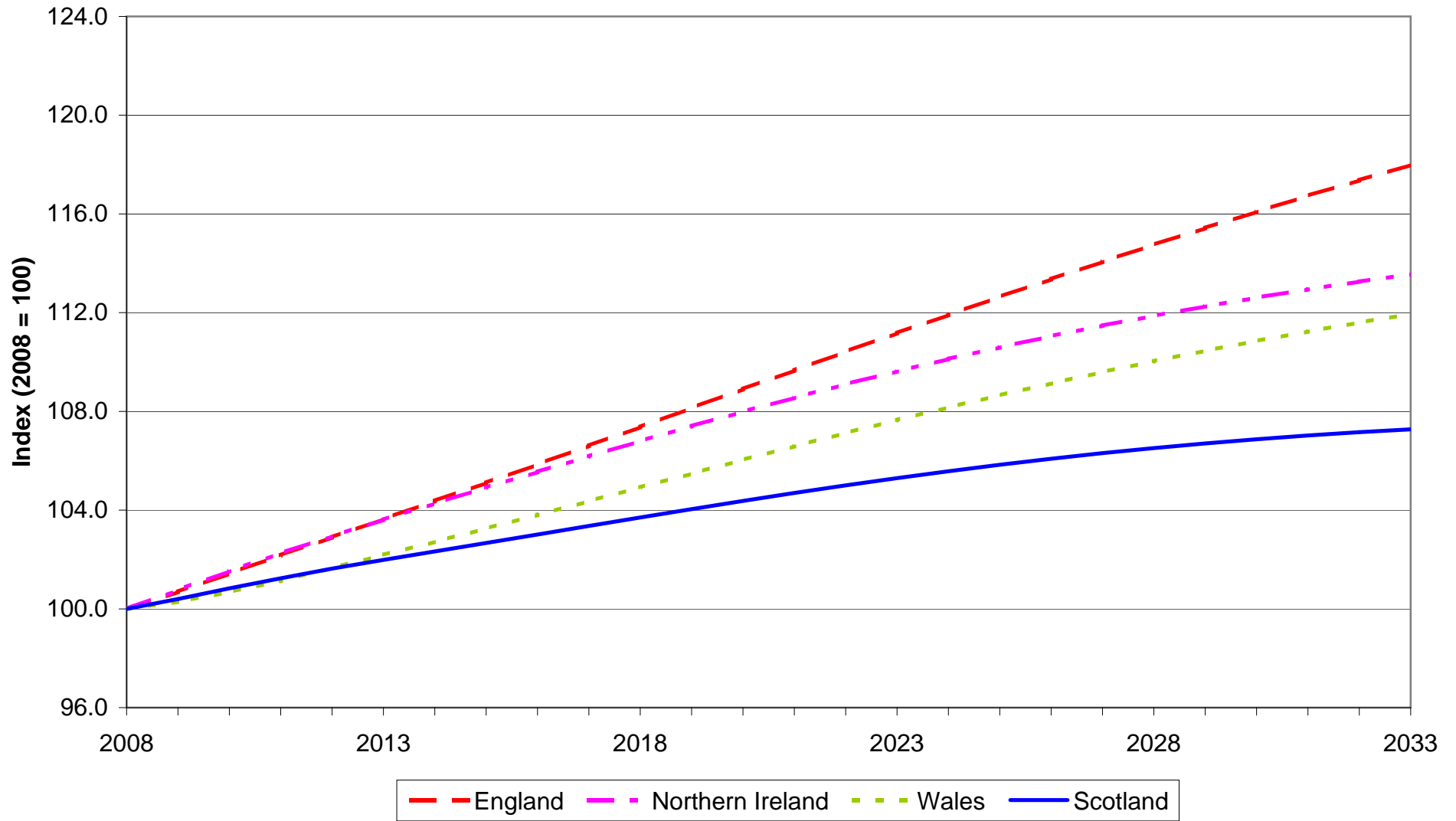


Figure 10 Projected Population Change in Selected European Countries, 2008-2033

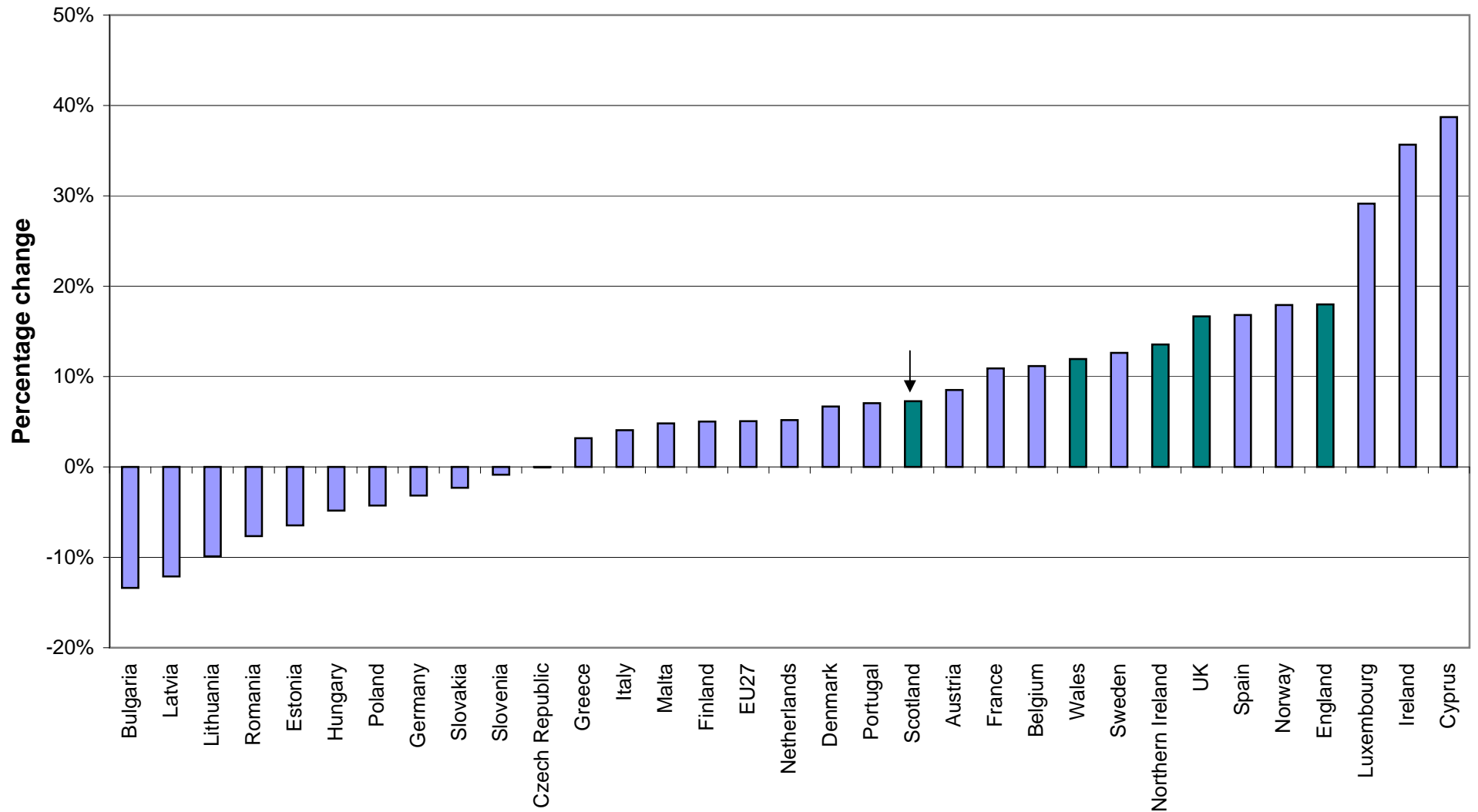


Figure 11 Actual and projected total population Scotland, under the 2008-based principal and selected variant projections, 1983-2083

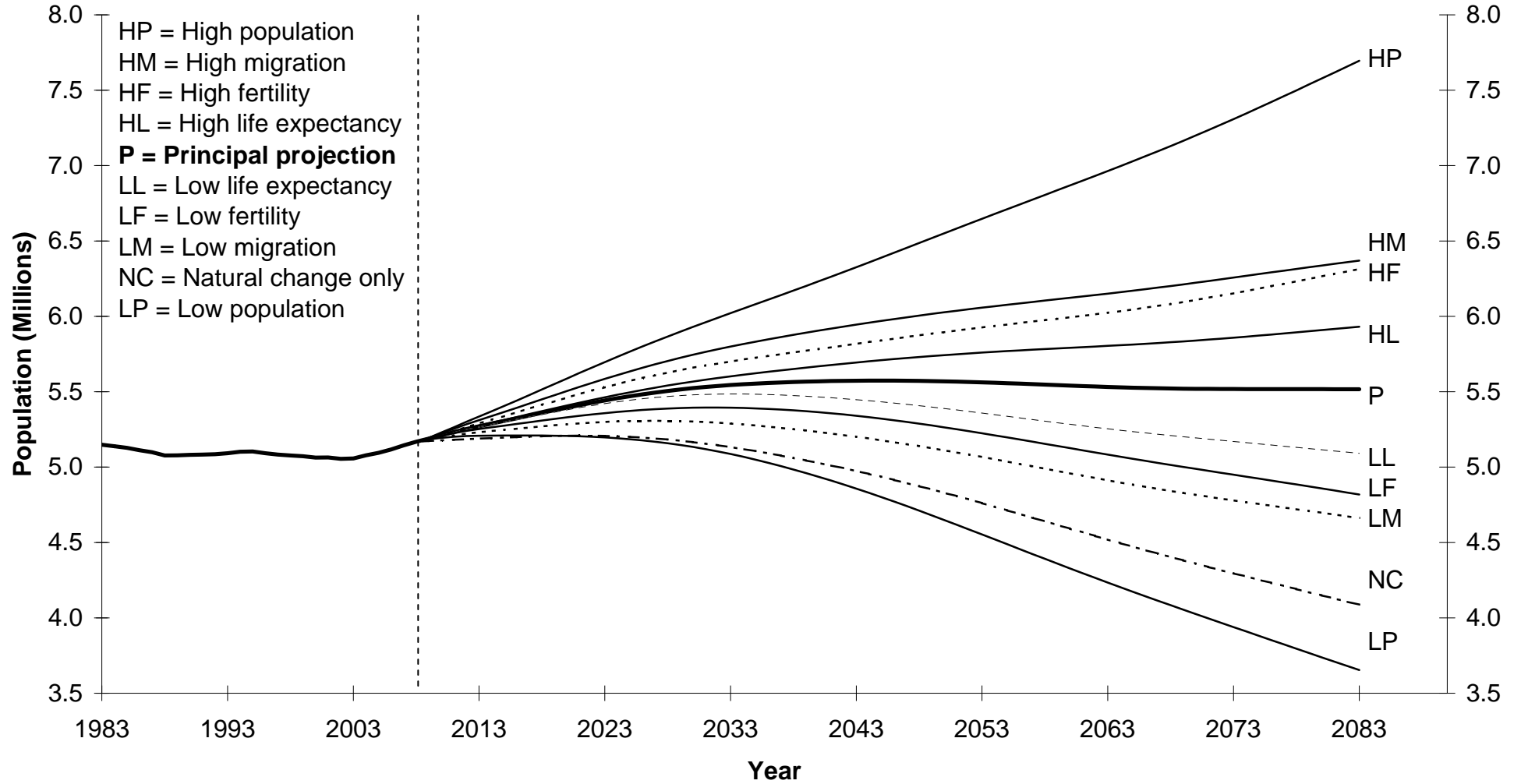


Figure 12 Percentage change in age structure under the 2008-based principal and selected variant projections, 2008-2033

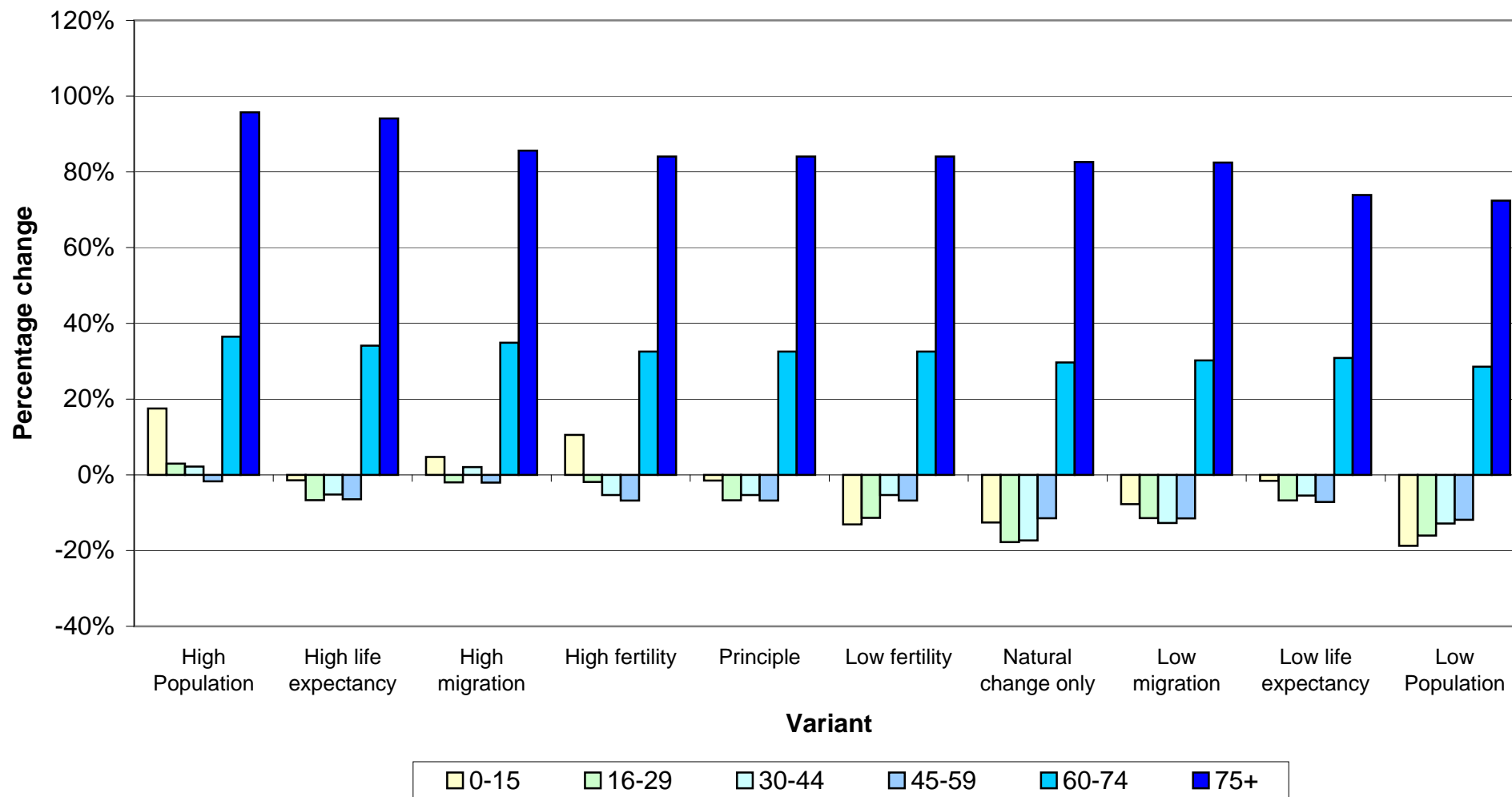


Figure 14 Dependency Ratios (dependents per 100 working age population) under the 2008-based principal and selected variant projections, 2008-2033

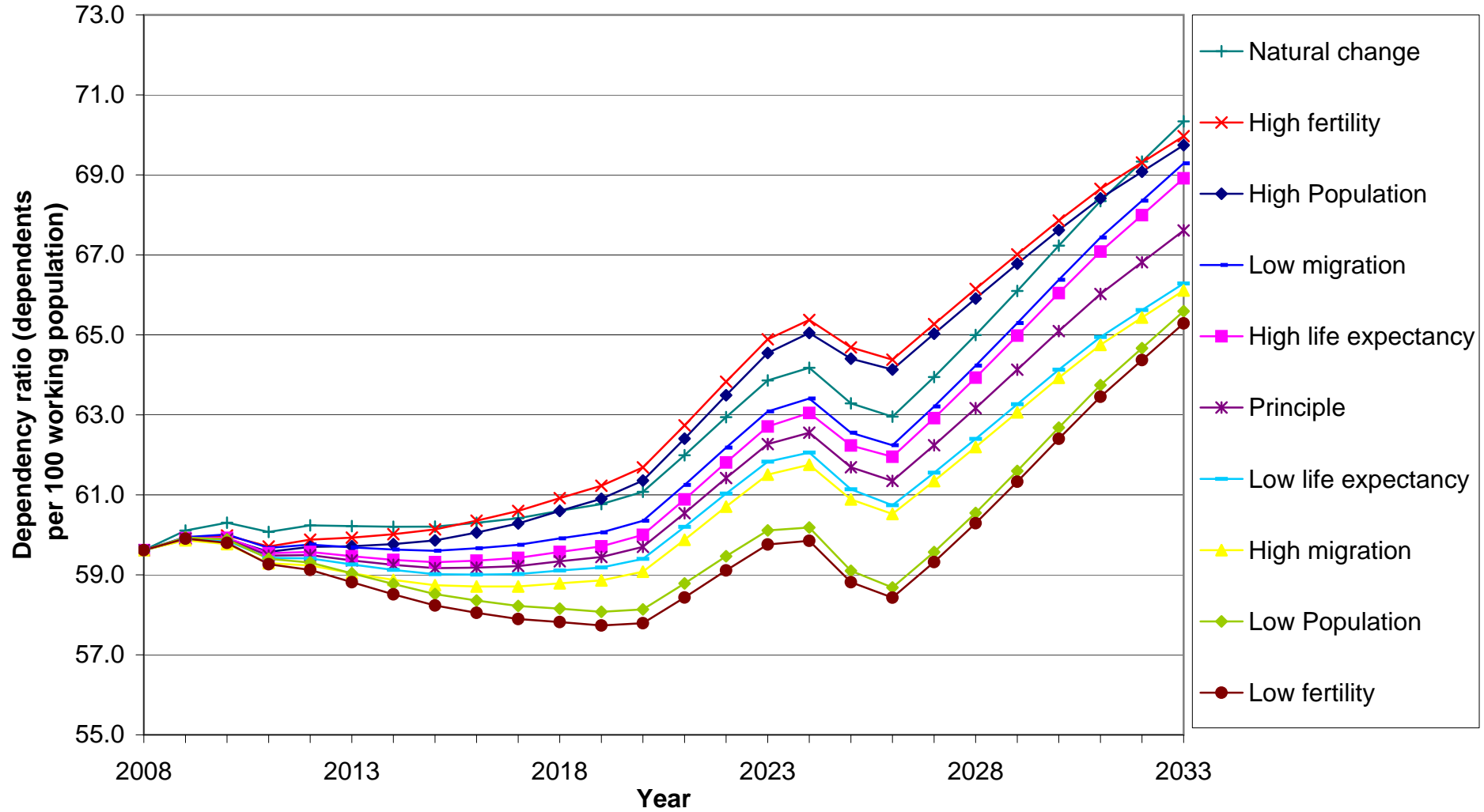


Figure A1 Age Specific Fertility, 1983 - 2008, Scotland

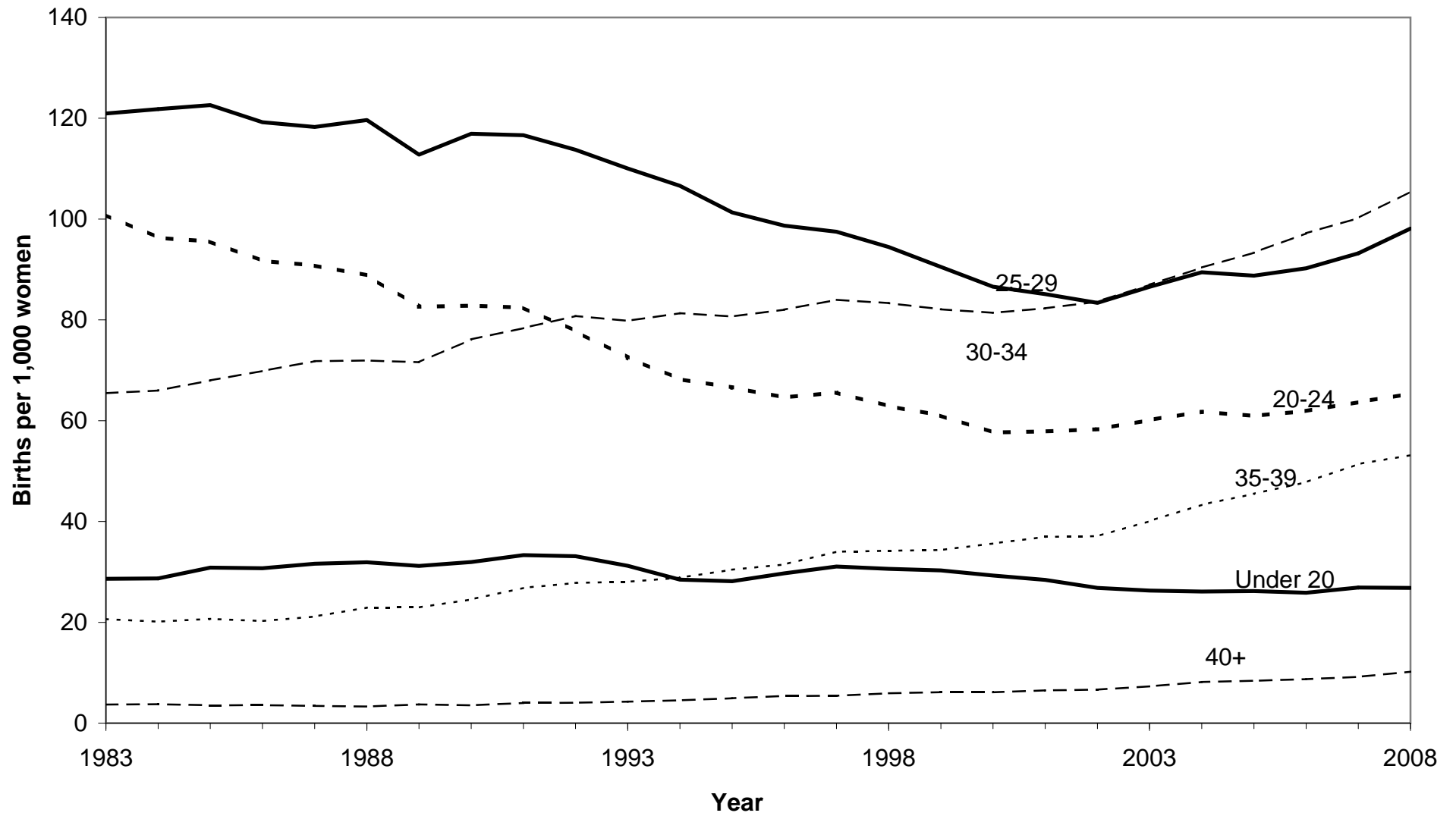


Figure B1 Period expectations of life (Eol) for Scotland less respective expectation of life for UK - for males at birth and ages 20, 40, 60 and 80, 1983-2008

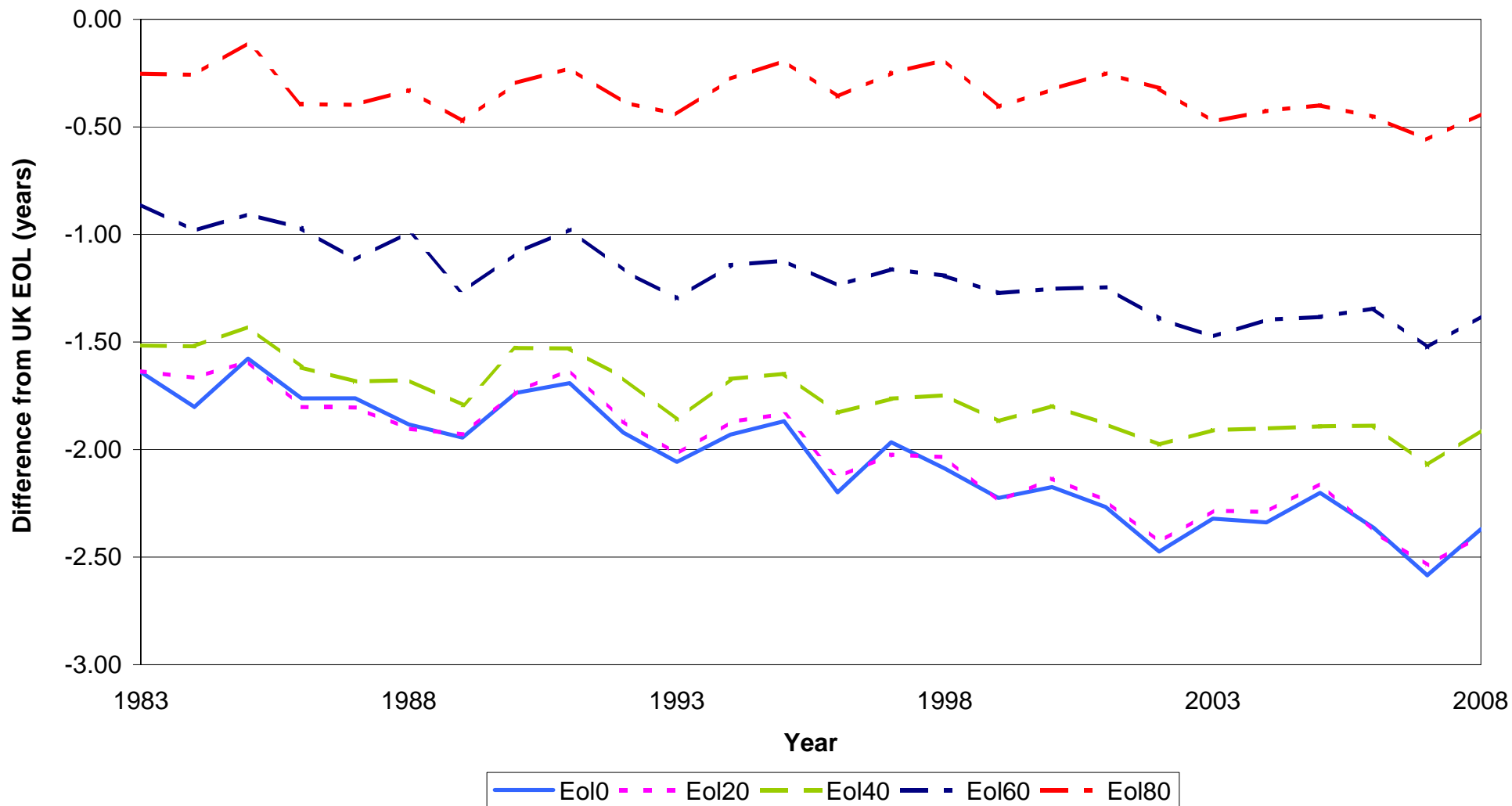


Figure B2 Period expectations of life (Eol) for Scotland less respective expectation of life for UK - for females at birth and ages 20, 40, 60 and 80, 1983-2008

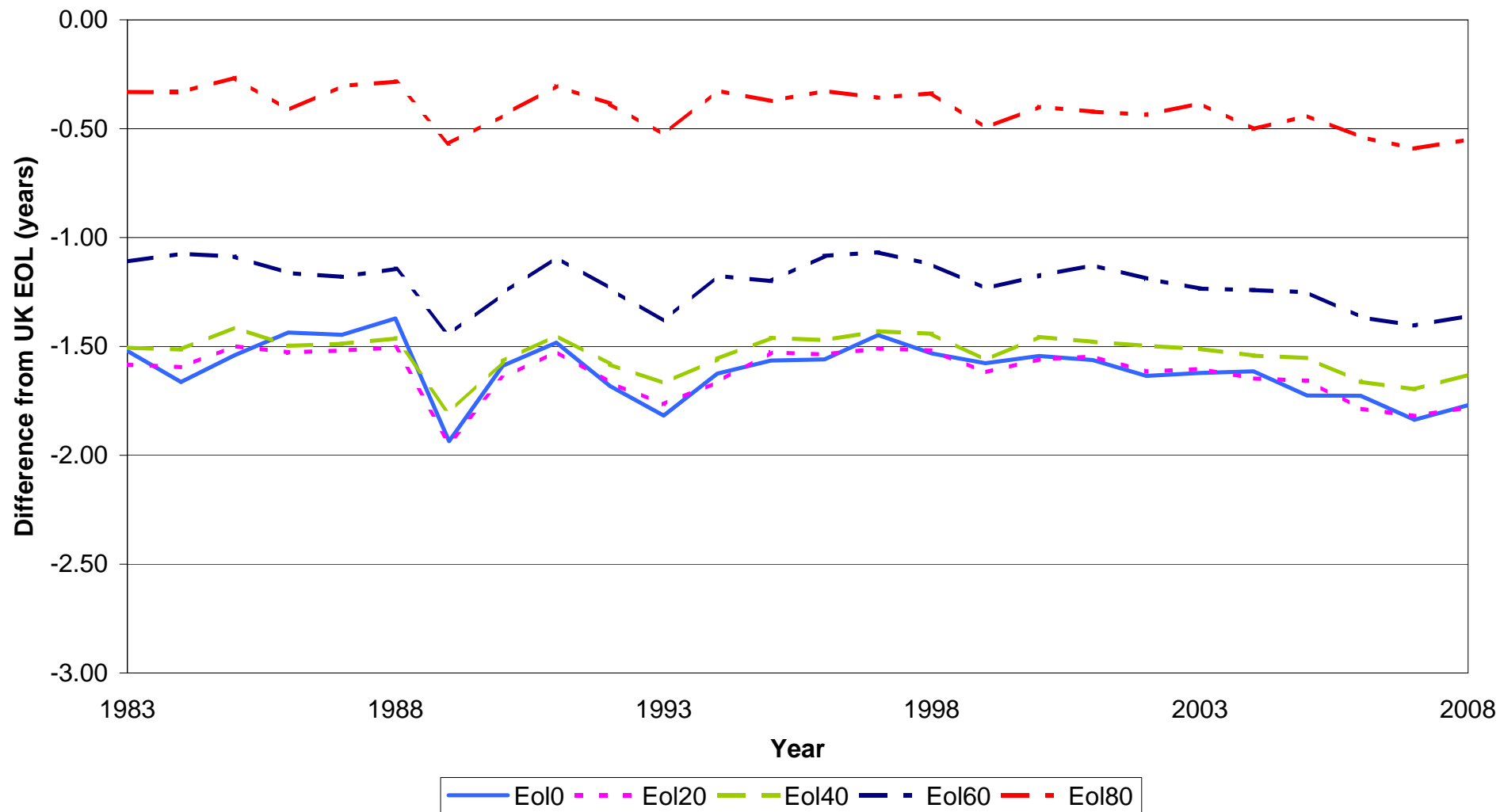


Figure C1 Estimated net migration, Scotland, 1951-2008

