

Workshop: Local Population Estimates and Projections

Paul Davison, Research Team Leader
Stirling Council

Content

- My experiences only* (may/ june 2009)
- POPGROUP & Other resources
- Workshop activity

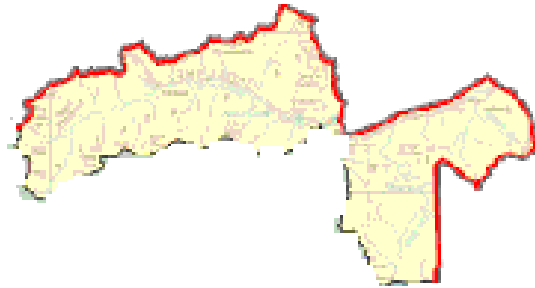
*

compare with Fife, Highland, Aberdeen City/Shire, G&CV et al

Drivers

- Local Development Plan
(also Local Housing Strategy/
HNDA)
- Promoting discussion and
greater understanding
- Investigating scenarios and
aspirations
- Encouraging a vision

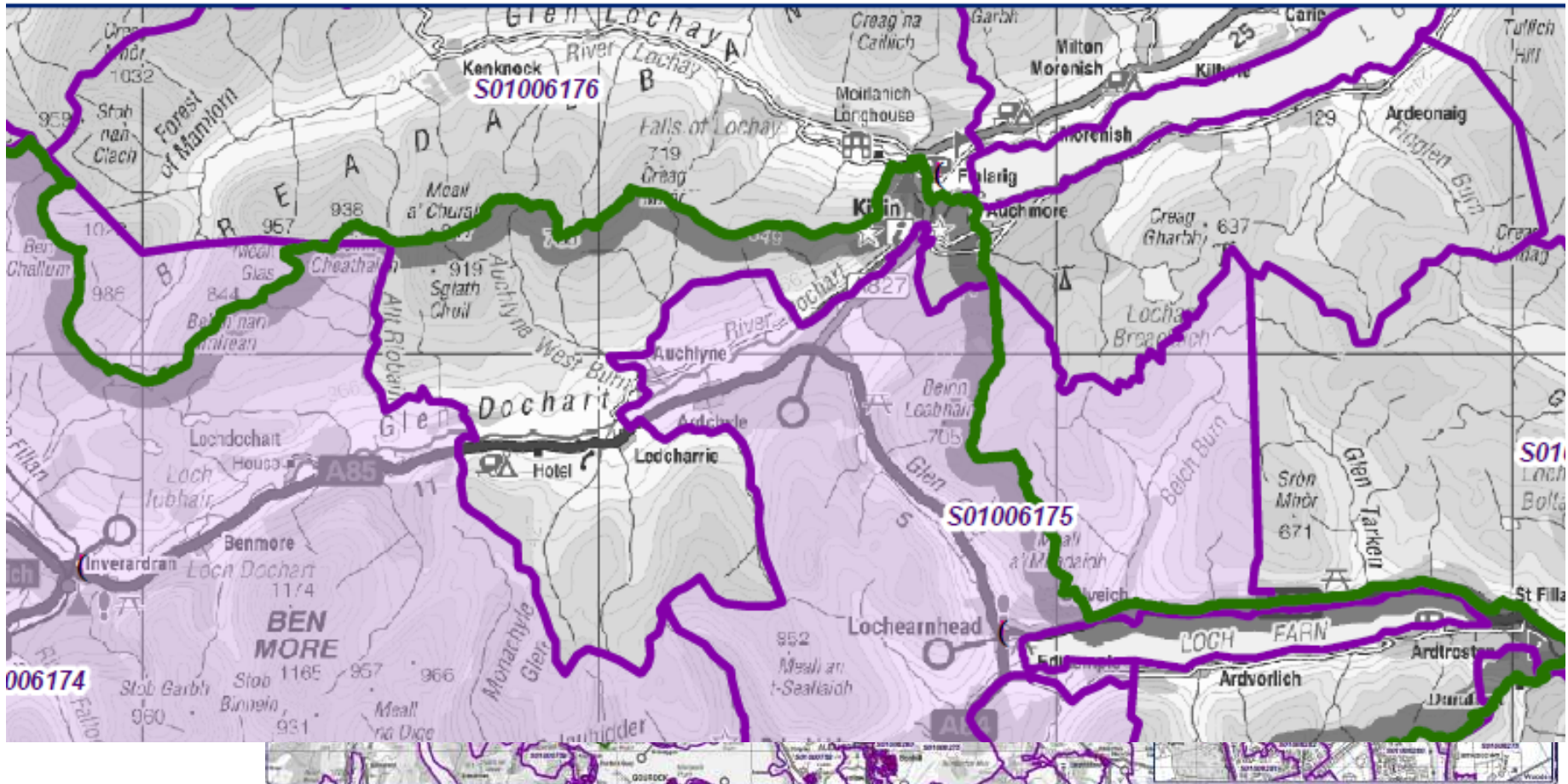
Local Development Plan (LDP) Area



Legend

-  Stirling Council Area
-  Local Development Plan (LDP) Area
-  National Park Planning Area

Defining Geographies



**Loch Lomond & the Trossachs National Park
by Data Zone**

True National Park boundary and Data Zones assigned to the park by centroid location

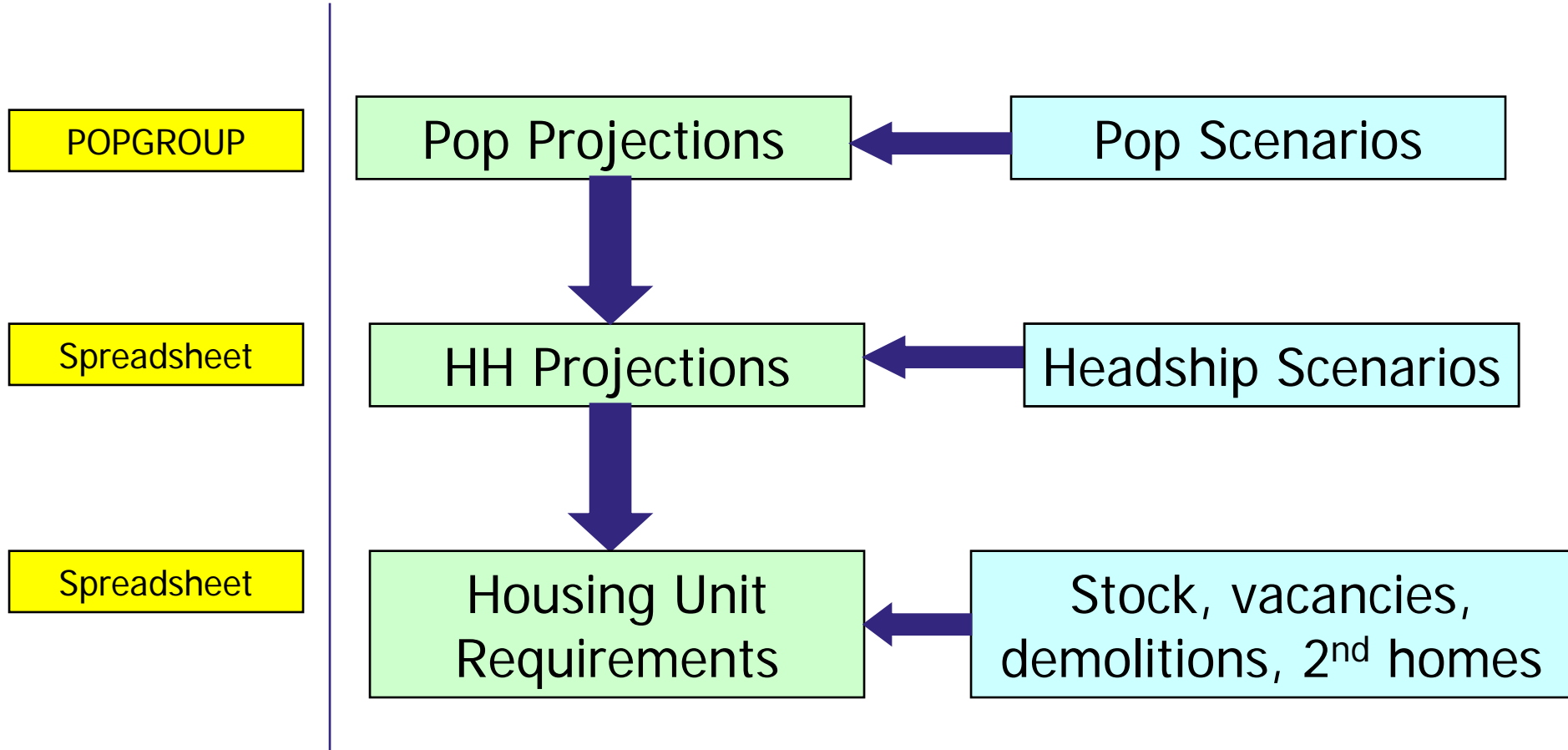
- Data Zone population weighted centroid
- Data Zone boundary
- Data Zones assigned to Park by centroid location
- National Park boundary

Scenarios

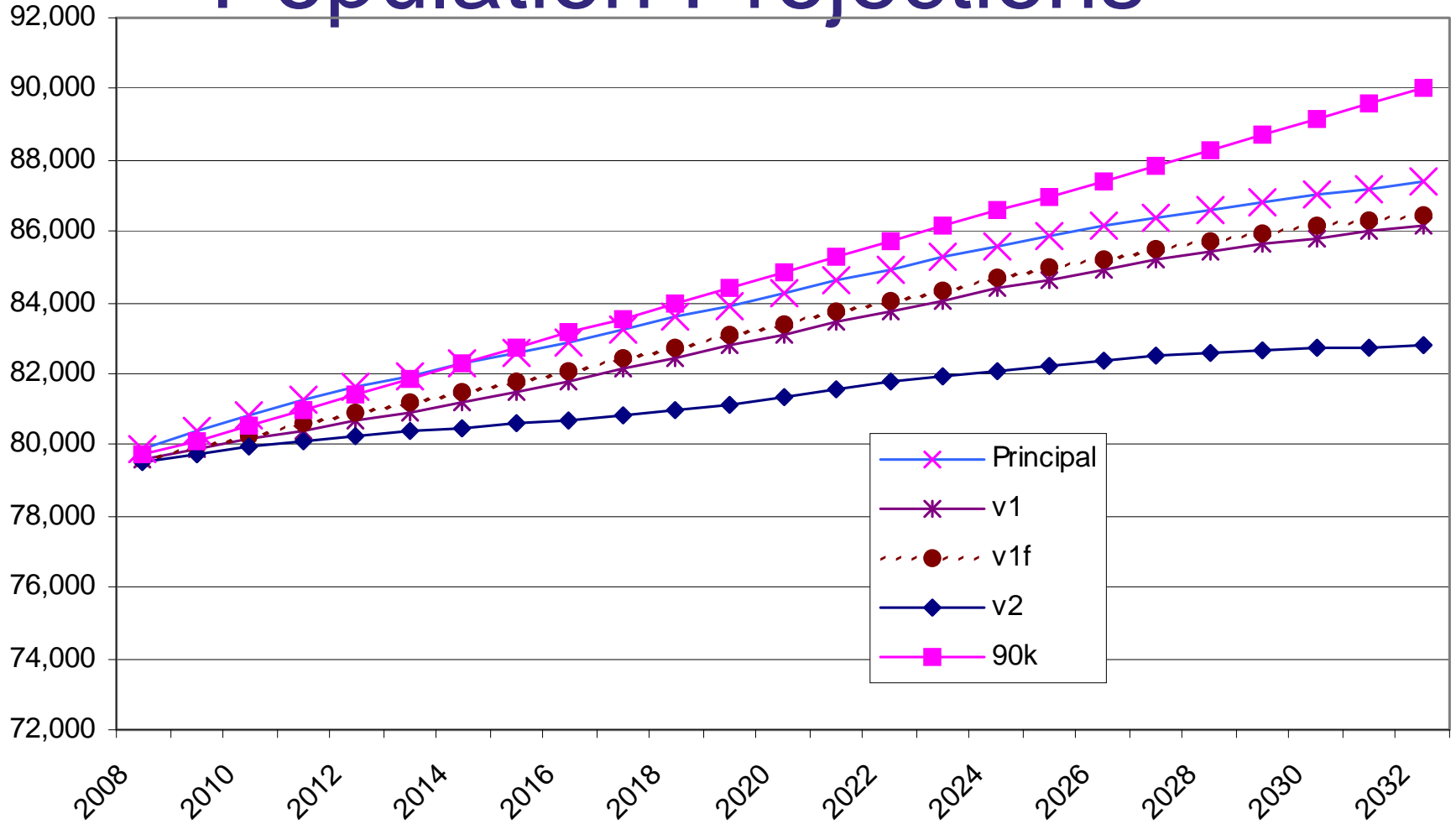
- 1. *Principal Projection.*** Assumptions as for standard GRO(S) projections.
- 2. *New-world order (v1)*** Reduced in-migration and fertility in early period of projection.
- 3. *V1 variant projection (v1f)*** – as scenario v1 but no fertility adjustments from principal.
- 4. *Pessimistic scenario (v2)*** Lower net working-age in-migration and fertility throughout projection.
- 5. *Aspirational scenario (90k)*** – 90,000 for LDP area by 2032

GRO(S) Inputs for defined area

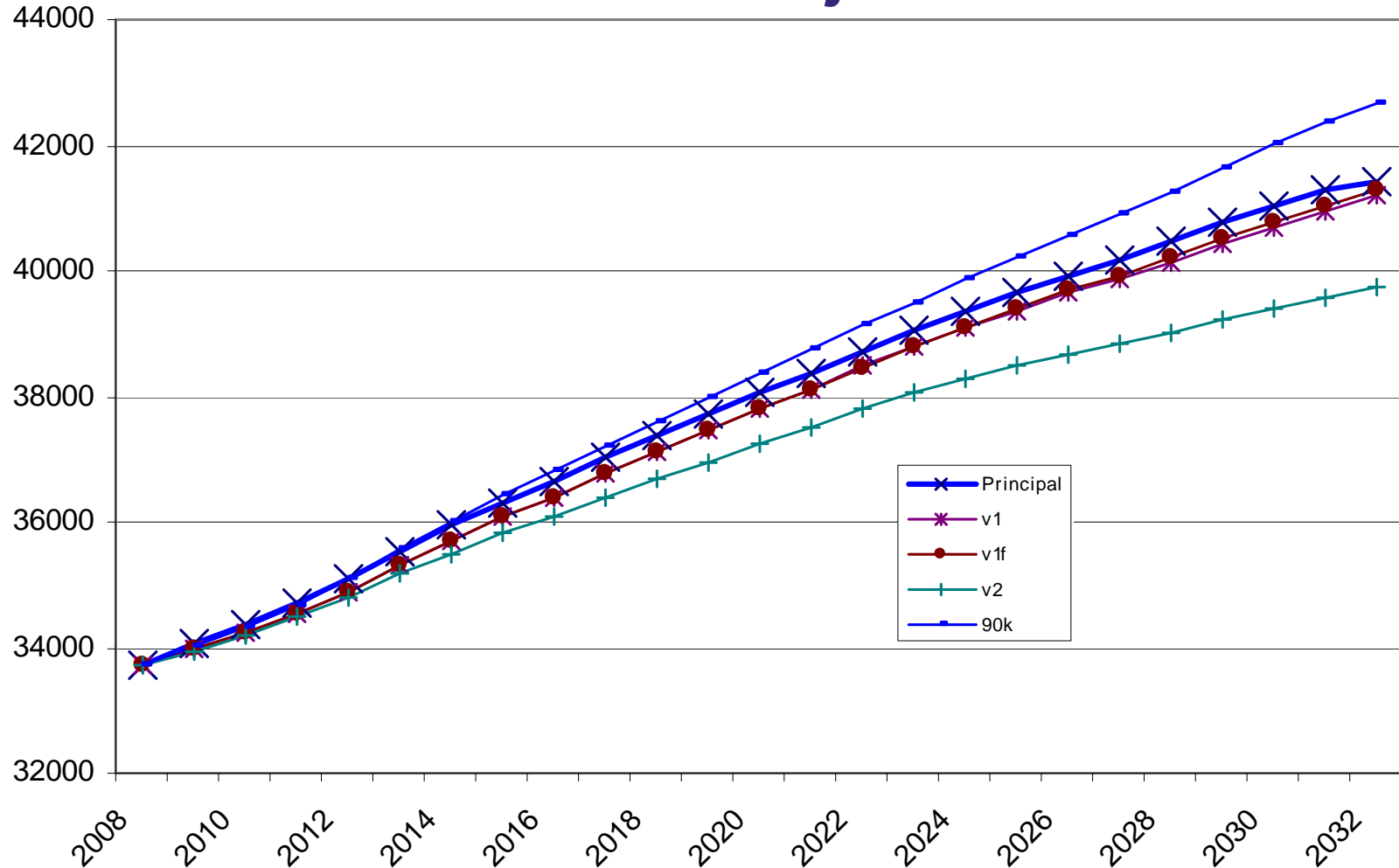
- Fertility, Mortality and Migration estimates
- Household estimates and Headship rates projections, communal establishment figures



Population Projections



Household Projections



Projected Housing Requirements

- No. of housing units
- With and without Major Growth Area (MGA)

Year	Population Projection			
	v1 (realistic)		90k (aspiration)	
	with MGA	without MGA	with MGA	without MGA
2012	-397	-142	-221	46
2017	-1171	486	-791	1000
2022	-438	2282	152	3027
2032	2382	5257	4050	6925

Negative figures indicate a projected surplus in housing

POPGROUP

<http://www.ccsr.ac.uk/popgroup/>

- Any area or sub-populations.
- Past information and their assumptions about the future for births and fertility, deaths and mortality, and migration
- Standard cohort component method to produce projections
- Provides results in Excel sheets with data extraction and chart routines available.
- POPGROUP Input data available from GRO(S)
- Additional local data on request
- Training & online resources



Population Estimates and Forecasts Stirling_SC_Area

Population Estimates and Forecasts Stirling_SC_Area

POPGROUP - Population Estimates and Forecasts Stirling_SC_Area

Valid **RUN THE MODEL**

Information for this scenario

Scenario identifier:

Contact details (to be included on all output files)

Organisation/Department Name:

Other information (e.g. contact details)

Final year for this forecast:

Double click to browse for directory or workbook names

Default Directory for the input workbooks:

Directory for the output workbooks:

Input workbook names (you do not need to give the .xls suffix for any workbook names)

Base population	popbase
Births & fertility	fert_v1
Deaths & Mortality	mort
In-migration from the UK (optional)	Mig_INUK_v1
Out-migration to the UK (optional)	Mig_OUTUK_v1v2
In-migration from Overseas (optional)	
Out-migration to Overseas (optional)	
Special Groups (optional)	

Save your input t
running the mod

Migration We

Pop'n	Housing
50%	100%
50%	0%
0%	0%
0%	0%

Output workbooks (named automatically from the scenario identifier)

Workshop Task

- Sunnyside and Raintown District Council
- In Groups – Same Task
- Scribe, Reporter & Artist in Residence